

# GROW COLLEGE GREEN

## Pre-Planning Design Consultation Report

May 2026



Comhairle Cathrach  
Bhaile Átha Cliath  
Dublin City Council



Údarás Náisiúnta Iompair  
National Transport Authority



# 1. Executive summary

Ahead of the submission of the planning application for Grow College Green, a flagship project to reimagine the historic core of Dublin city centre, Dublin City Council (DCC) carried out a four-week pre-planning design consultation. This consultation exercise, which took place during February and March 2026, was carried out to gather stakeholder and public feedback on the updated public realm improvement plans for College Green, Dame Street and the surrounds, in advance of the formal planning stage for the project.

Grow College Green is being developed in collaboration with the NTA as a project following on from the DCC/NTA City Centre Transportation Plan 2023.


The consultation process followed a presentation of the pre-planning design to the Council's Mobility and Public Realm Strategic Policy Committee and forms part of DCC's ongoing programme of engagement with stakeholders, including local business owners and residents, Disabled Persons Representative Organisations (DPROs) and the public, amongst others, on the project.

Engagement was supported by targeted stakeholder briefings, a coordinated media and social media campaign, and accessible consultation formats delivered online and in person. In total, over 1,800 responses were received. There were 1,682 submissions via the Engage platform from over 7,800 visitors to the page. Feedback was also received by email, post and at in-person events. The comprehensive social media campaign resulted in a reach of 107,760 unique users across Instagram and Facebook with a total of approximately 190,765 impressions across LinkedIn, Instagram and Facebook.

The consultation confirmed strong overall support for the updated design. 81.2% of respondents indicated that they like the proposals (66.5% strongly like; 14.7% somewhat like). 15.9% expressed dislike (12.2% strongly dislike; 3.7% somewhat dislike), while 2.9% were neutral, unfamiliar, or did not specify. This is in line with feedback gathered through previous stakeholder engagement and public consultation phases.

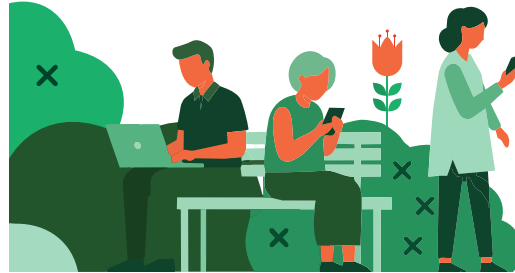
Support was noted in submissions from the general public as well as from across the political, academic, tourism and environmental sectors.

**81%**  
**like the  
proposal**



# Key survey highlights

**1,800**  
responses



Engage platform:



**1,682**  
submissions,  
**7,800** visitors  
to the page

Social media campaign:

**Reached**  
**107,760** unique  
users



**190,765**  
impressions

across LinkedIn,  
Instagram and  
Facebook



**4 week**

Consultation period



## Feedback highlighted clear priorities for the future of Grow College Green:



**Active movement:** strong support for reducing vehicular traffic and prioritising pedestrians and cyclists.



**A new civic space:** widespread enthusiasm for a large civic space, comparable to those in other major European cities, that is welcoming and flexible.



**Greening and sustainability:** positive reaction to the emphasis on planting, shade and climate resilience, with calls to go further, including the use of native species.



**Decluttering and legibility:** support for minimising on-street clutter, including utility boxes and signage, to improve the quality of the public realm.



**Heritage:** appreciation of proposals that better showcase the architecture and historic character of the area.

## Key items raised regarding the future of Grow College Green included:



**Maintenance and management:** the need to keep the space clean, safe and well maintained, including any proposed water feature.



**Public safety and antisocial behaviour:** requirement to ensure daytime and night-time safety, monitoring and appropriate enforcement.



**Public transport and connectivity:** respondents seeking clarity on the impact on bus movements and traffic arrangements in the wider city centre area



**Accessibility and inclusive design:** ensure older people and people with disabilities can access and enjoy the space.



**Activation:** queries regarding how the civic space will be animated and programmed throughout the day and evening.



**Commerce and trade:** seeking to ensure that appropriate access for local businesses within the project area and adjacent streets is facilitated.

Alongside this detailed feedback, a number of submissions emphasised the importance of maintaining momentum and progressing delivery of the project without delay.

This report summarises the consultation approach and analyses the feedback gathered. As DCC prepares its planning application, these consultation findings will inform further refinement of the design. Dublin City Council will continue to engage with stakeholders as the project progresses, responding to feedback where required and supporting the successful delivery of this exciting project. These findings demonstrate both a strong public mandate for the project and clear areas where further detail and refinement will strengthen the final design.

## 2. Consultation purpose and scope

This pre-planning, non-statutory consultation stage of the Grow College Green project sought to inform the design that will be submitted for planning permission. The consultation on the pre-planning design followed two earlier phases, which have already guided the design development, namely the pre-design and emerging design consultation. Feedback on the current pre-planning design was sought, including on the overall layout and quality of the civic space, movement and accessibility, greening and climate resilience, and how the space might be used and experienced.



# 3. Consultation material development

## 3.1 Engagement assets

In advance of the official launch of the pre-planning design in February 2026, the Dublin City Council Project Team worked closely with the Design Team to develop a comprehensive suite of visual and supporting materials to communicate the vision and ambition for Grow College Green.

These assets included a series of diagrams illustrating how the proposals respond to key priorities such as movement, connectivity and accessibility, as well as sustainability and climate action. The Design Team also produced high-quality visualisations and animated graphics of the proposed space, depicting members of the public using and enjoying the area, to help bring the design to life and convey its potential as a vibrant civic space. These diagrams, visualisations and animated graphics formed a central part of this material, helping to develop public understanding of the proposals and encouraging informed participation in the consultation process.

In addition, a Grow College Green brochure was developed to provide an overview of the project, including its vision and design inspiration, a summary of engagement and consultation undertaken to date, an outline timeline for the project, and a diagram showing proposed access arrangements for various transport modes. All assets developed were also made available in accessible formats.

Dublin City Council's consultation platform, Engage.ie, was utilised to host the online consultation. Data collected during the pre-planning design consultation and previous consultations is stored on this site and is used as a GDPR-compliant resource for consultation analysis.

To support inclusive participation, multiple submission formats were provided, including an online survey, in-person engagement opportunities and postal submissions.



↑ A Grow College Green brochure was developed.



↑ A Grow College Green postcard was developed.

# Proposed design



--- Project boundary

**1.** Civic space

**2.** Trinity crossing

**3.** Henry Grattan statue

**4.** Access route

**5.** Artistic water feature

**6.** Seating area

**7.** Widened footpath

**8.** Open space

**9.** Thomas Davis statue & Memorial Fountain

**10.** Crossing point

**11.** Seating

**12.** Activity area/ pocket space

**13.** Planted area

**14.** Open lawn

**15.** Rain garden

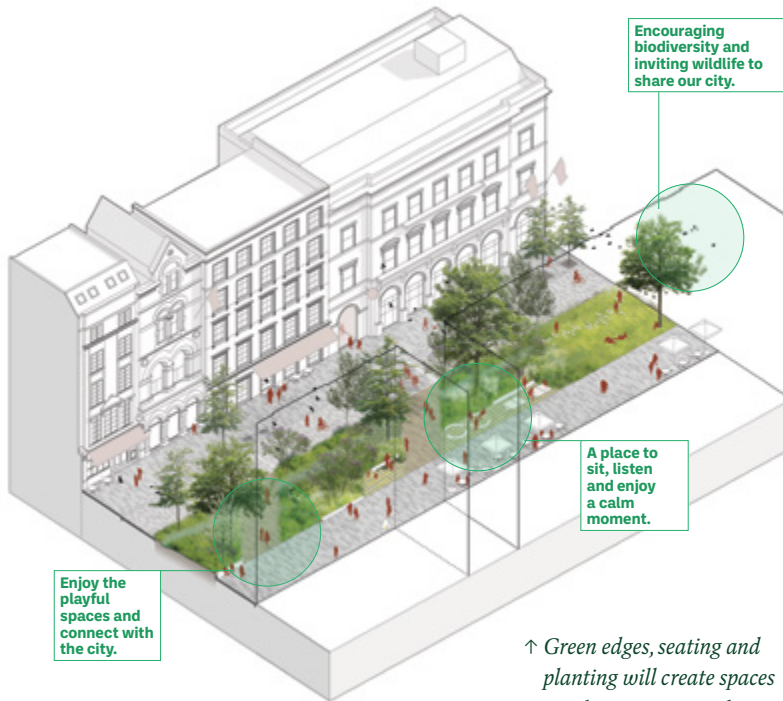
 Existing tree

 Proposed tree

0 5 25 50 M

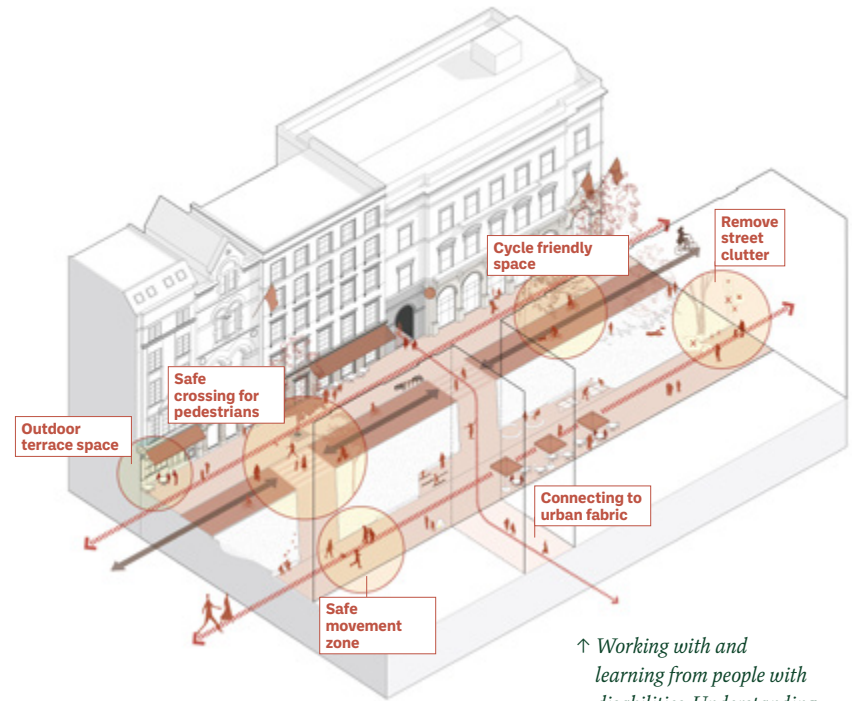


## A place to pause, breathe & connect



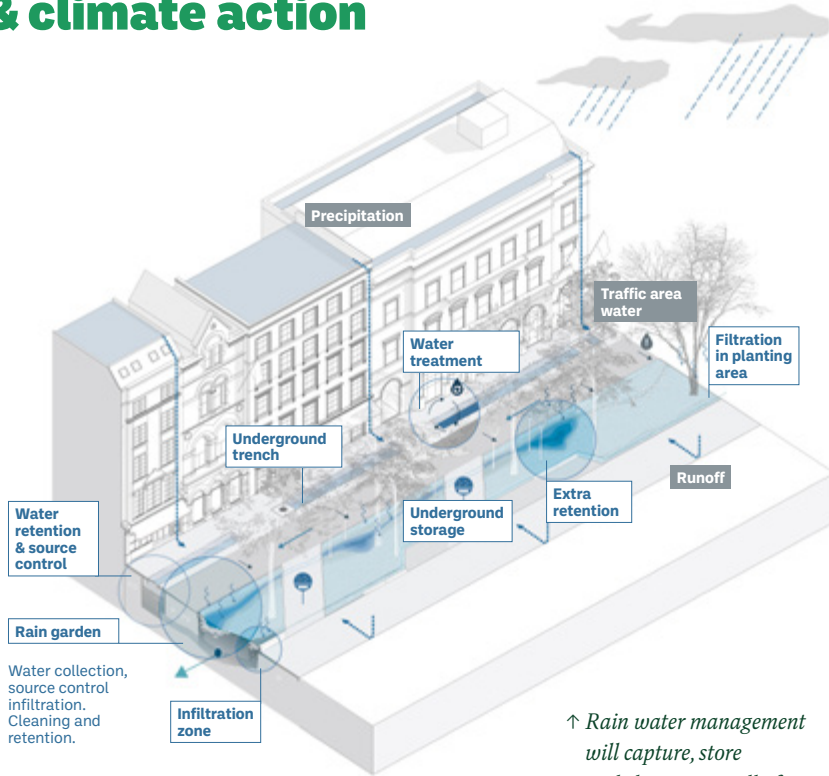
↑ Green edges, seating and planting will create spaces to relax, connect, gather and enjoy everyday life and cultural events.

## Movement, connection & accessibility



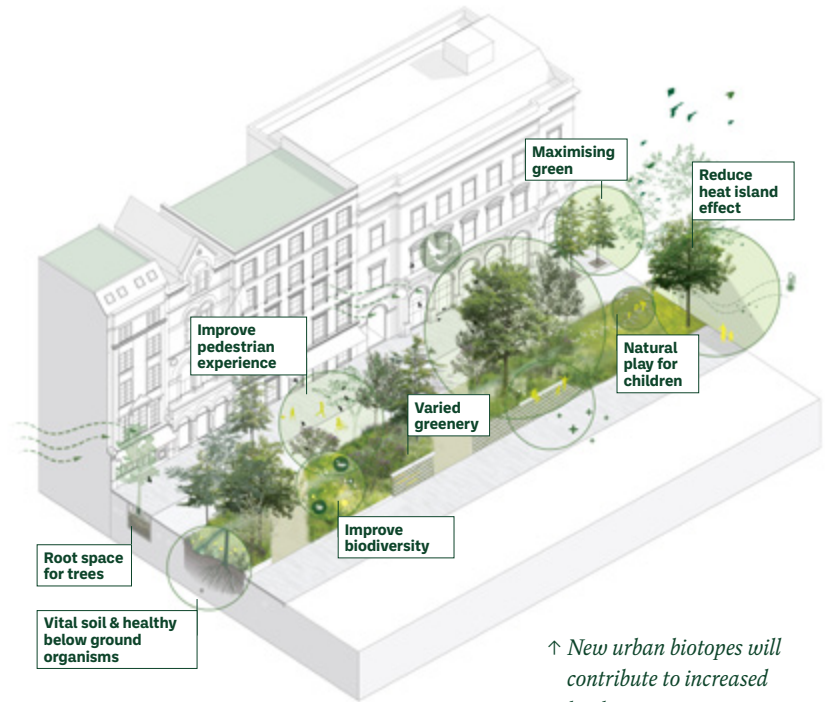
↑ Working with and learning from people with disabilities. Understanding challenges and developing space through a process of universal design.

# Support sustainability & climate action



Water collection, source control infiltration. Cleaning and retention.

↑ *Rain water management will capture, store and clean water, all of which will be valuable during both drought and storm conditions.*



↑ *New urban biotopes will contribute to increased biodiversity, improve air quality and contribute to carbon sequestration.*

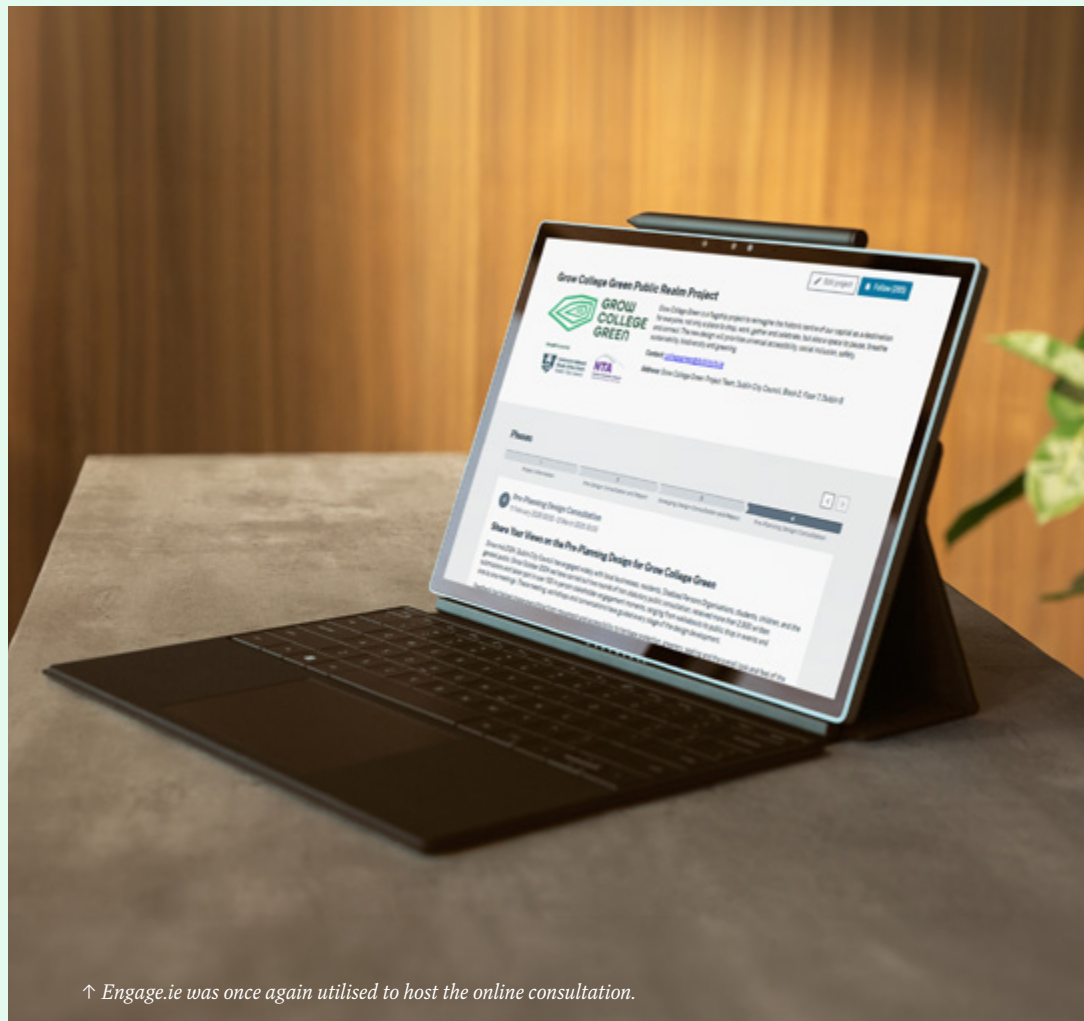
## 3.2 Online survey

The pre-planning design consultation included a public survey, which was developed in line with established best practice for digital engagement and in compliance with GDPR and accessibility requirements. The survey and all supporting consultation materials were made available via the Engage platform, with hard copies also accessible at the Civic Offices, Wood Quay.

The survey comprised nine questions, using a combination of multiple choice, short answer, open answer and open-ended response formats. The first six questions were designed to capture contextual information about respondents, including whether they were responding in a personal capacity or on behalf of an organisation or group. Respondents were also invited to provide demographic information, such as age bracket and geographic location (Dublin City, elsewhere in Ireland, the EU or outside the EU).

Questions seven and eight sought respondents' views on the pre-planning design proposals for Grow College Green. The final question provided an opportunity for respondents to share additional comments or to highlight any items not accounted for in the design, that they believe Dublin City Council should consider as the project progresses.

All data collected via the online survey was assessed in line with GDPR requirements, with feedback anonymised.



↑ Engage.ie was once again utilised to host the online consultation.

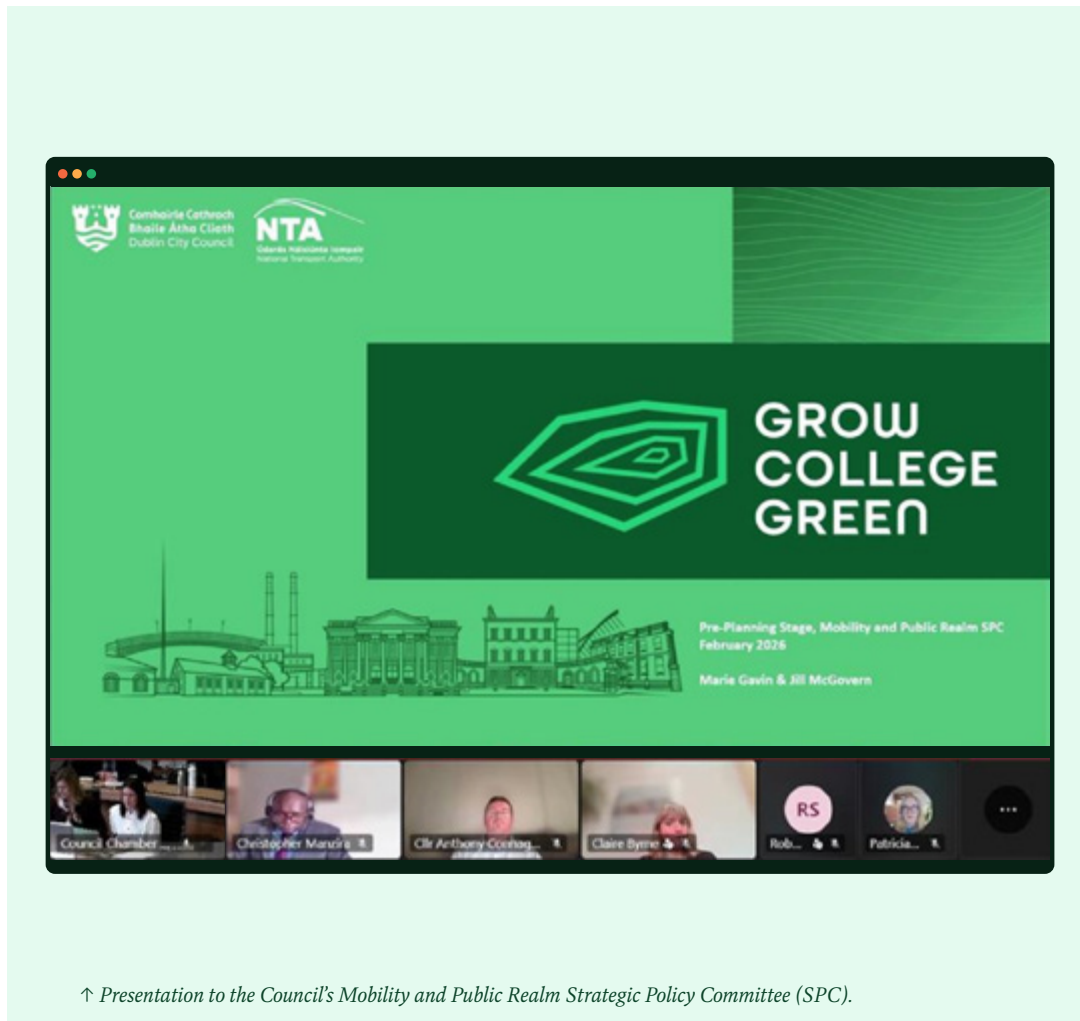
# 4. Pre-planning design launch

## 4.1 SPC presentation

The pre-planning design and public consultation were officially launched on 11 February 2026, during a presentation by the Grow College Green Project Team to the Council's Mobility and Public Realm Strategic Policy Committee (SPC). This marked the commencement of a new phase of consultation. All SPC members were provided with key project materials to support informed engagement and discussion. This was also provided in an accessible format.

The presentation outlined the updated design proposals, the project timeline, and details of the extensive programme of engagement undertaken by the Project Team to date, including how feedback from previous stakeholder and public consultation phases had informed the evolved design. The session also included a questions and answers session with SPC members.

Overall, SPC members were complimentary of the work carried out to date and of the Project Team's efforts to ensure a broad and inclusive approach to consultation. Members raised queries in relation to the proposed water feature, cycling infrastructure throughout the space, and the enhancement of accessibility, which were discussed as part of the meeting.



↑ Presentation to the Council's Mobility and Public Realm Strategic Policy Committee (SPC).

## 4.2 Public information campaign

Dublin City Council and the Design Team worked collaboratively to develop and implement a comprehensive and integrated communications plan. The aim was to maximise stakeholder awareness of the pre-planning design proposals and to create clear, accessible opportunities for feedback at each stage of the process.

A targeted four-week public information campaign was developed to broaden reach and encourage participation in the consultation. A combination of traditional and social media was used to raise awareness of the pre-planning design and provide an opportunity for the public to engage.

In advance of the breakfast briefing event on 18 February, stakeholders were issued with invitations via email and by post in the form of a printed leaflet, with event details provided in both English and Irish. Postal distribution of the leaflets was carried out by a third-party distribution company, which delivered 334 leaflets to local residents, 112 to mixed use stakeholders, and 608 to commercial stakeholders, bringing the total number of leaflets issued to 1,054. In addition, Dublin Town and the Temple Bar Company shared the invite with their member distribution lists.

## 4.3 Media

To support media engagement, a press release was prepared in advance of the pre-planning design launch. This included quotes from the Lord Mayor of Dublin, Councillor Ray McAdam, Dublin City Council Chief Executive Richard Shakespeare, and Chair of Dublin City Council's Mobility and Public Realm Strategic Policy Committee, Councillor Janet Horner, alongside a clear call to action encouraging people to take part in the public consultation.

The press release was issued by Dublin City Council's Press Office to national and Dublin focused media following the launch of the pre-planning design. The publication of the pre-planning design and opening of the public consultation generated immediate and widespread media coverage.



↑ [IrishTimes.com](#)



↑ [BreakingNews.ie](#)



↑ [RTE.ie](#)



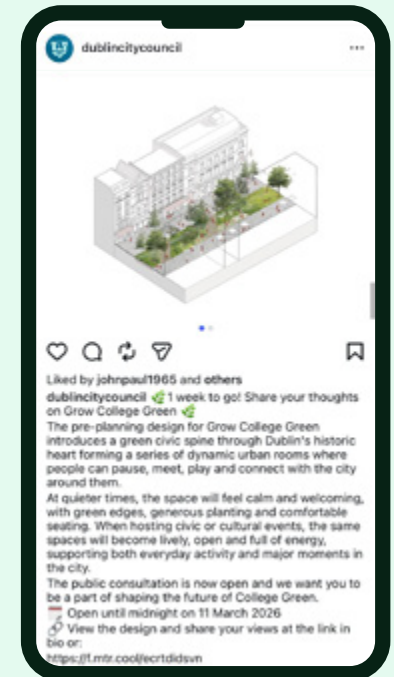
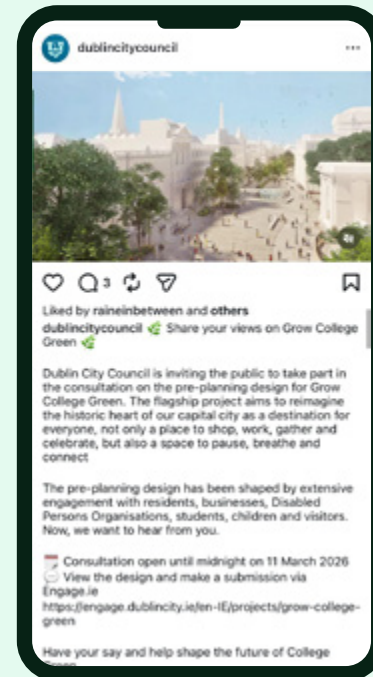
↑ [Newstalk.com](#)

## 4.4 Digital media

A content calendar was developed alongside a suite of supporting images and video content, showcasing design renders and axonometric diagrams, for use across Dublin City Council's social media channels to promote awareness of, and encourage participation in, the consultation.

The first tranche of content was published immediately following the completion of the Project Leads' presentation to the Mobility and Public Realm Strategic Policy Committee on 11 February, with a sustained programme of posts rolled out across Dublin City Council's Facebook, LinkedIn and Instagram channels over the course of the consultation period.

The publication of the pre-planning design also prompted commentary across wider social media platforms, including Reddit and X. The Design Team monitored, documented and considered this commentary as part of the overall review of feedback received through the consultation process.



## 4.4.1 Digital media insights

Organic social media content posted by DCC across its various platforms generated strong engagement during the consultation period. In total, DCC published 40 static posts across its Instagram, Facebook and LinkedIn accounts, with Instagram and Facebook featuring a number of posts as ‘Stories’ with click-through links.

Social media activity generated high levels of engagement throughout the consultation period. Across the consultation period, social media activity delivered very strong visibility, reaching at least 107,760 unique users across Instagram and Facebook. In total, the campaign generated approximately 190,765 impressions on Facebook and LinkedIn, indicating consistent exposure beyond initial reach. Facebook emerged as the leading platform, combining the highest reach (76,874) with the highest impressions (121,686), while

LinkedIn also performed well with 69,079 impressions. Instagram contributed a reach of 30,886. Across all three channels, performance significantly exceeded industry benchmarks; engagement rates of 9.6% on Facebook, 4.2% on Instagram and 13.2% on LinkedIn, compared to typical public sector benchmarks of under 3%. Click-through rates were equally successful, at 6% on Facebook and 10.3% on LinkedIn, against industry benchmarks of under 1% on both channels. Engagement and click-through rates significantly indicated strong public interest and interaction with the consultation content.

# Reached 107,760 unique users



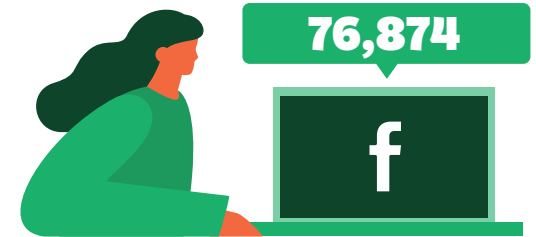
# 190,765 impressions

across LinkedIn,  
Instagram and  
Facebook



# Facebook

had the highest reach



# 5. Consultation engagement options

## 5.1 Online via Engage Platform



In line with previous Dublin City Council public engagement initiatives, the Engage.ie consultation platform was used to host the survey on the Grow College Green pre-planning design. The platform supports increased citizen participation and community involvement in public projects, providing an accessible and transparent route for people who live, work in and visit Dublin to share their views.

The online consultation opened for submissions on 11 February 2026 and remained open until midnight on 11 March 2026, providing a four-week window for public and stakeholder feedback.

## 5.2 Feedback by Post and Email



In addition to online engagement, feedback by post and email was also facilitated. Members of the public were invited to submit written feedback by post in a sealed envelope marked “College Green - Dame Street Pre-Planning Design Feedback” and addressed to: Grow College Green Project, City Centre Projects Office, Block 2, Floor 7, Civic Offices, Wood Quay, Dublin 8.

Some respondents, particularly stakeholders with an existing history of engagement with the Project Team, chose to provide feedback directly by email. All submissions received by post and email were logged and reviewed alongside as part of the overall consultation process.

## 5.3 Civic Offices Wood Quay



The consultation material and a submission box were also available to the public to engage with in Block 4 Atrium of DCC Civic Offices at Wood Quay during the consultation period.



## 6. Stakeholder engagement

During the pre-planning consultation the Project Team pursued engagement with internal and external stakeholders, including Disabled Persons Representative Organisations, local businesses, public facing organisations and associated DCC departments, amongst others. Dublin City Council also informed the Dublin City Public Participation Network of the pre-planning design consultation through the network's newsletter.

Stakeholder engagement during the pre-planning consultation process took the form of stakeholder events, including a breakfast briefing for local businesses and residents. The Project Team also participated in Trinity College Dublin's Green Week.

The following provides an overview of stakeholder engagement.

### 6.1 Disabled Persons Representative Organisations (DPROs)

In line with the UNCRPD the Project Team contacted the DPROs and offered them the opportunity to discuss the pre-planning design on an individual basis, either in person or virtually.

Many of the points raised in these meetings concerned four key project areas including navigation and wayfinding; pedestrian, cyclist and vehicle interactions; management of space and transport implications. All of these observations have been captured in the overall findings for the consultation and will inform the final design.

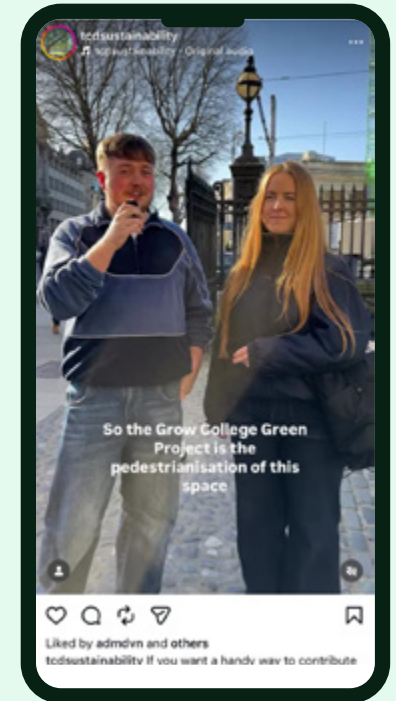


## 6.2 Trinity Green Week

To highlight collaborative efforts to enhance green spaces and promote sustainability, Trinity College Dublin (TCD) hosted the Grow College Green Project Team as part of the university's annual Green Week in March 2026.

The project's participation in the week-long programme was promoted through Trinity's own media outlets and social media channels. As part of this activity TCD posted a video featuring students at Trinity's Front Gate discussing the project and encouraging fellow students to have their say on the future of the space.

As part of the programme, the Project Team presented to staff and students in the university. Following the presentation, members of the Design Team engaged directly with students at a Grow College Green information stand located in Trinity's Arts Block.



*Trinity College Dublin (TCD) hosted the Grow College Green Project Team as part of the university's annual Green Week.*

## 6.3 Breakfast briefing

Highlighting the Grow College Green Project Team’s commitment to working closely with local businesses, residents and stakeholders, a breakfast briefing event was organised for 18 February in the Stock Exchange Building on Foster Place. Leaflet invitations were issued to local businesses, residents and stakeholders ahead of the event. The venue was selected due to its proximity to the project area, providing a relevant and accessible setting for engagement.

The event on 18 February took place in the Market Floor space of the Stock Exchange Building, with tables arranged in a roundtable format to encourage discussion.

A member of the Grow College Green Project Team and/or Design Team was assigned to each table. On arrival, attendees were invited to sit at a roundtable of their choice. In total, 41 representatives from local businesses and organisations attended and participated in the event.

Following a short presentation which outlined the pre-planning design proposals, attendees were invited to discuss the design at their tables. Discussions focused on specific personal and commercial issues or concerns, with members of the Project Team and Design Team facilitating conversations and taking detailed notes to accurately capture matters raised.



↑ Breakfast briefing event in the Stock Exchange Building on Foster Place

## 7. How many engaged?

A total of over 1,800 responses were received across all consultation channels.

Responses were received through the following sources:

- 1,682 online submissions received through the Engage platform - from over 7,800 visitors to the Engage.ie platform, highlighting interest in the project.
- 44 written submissions to the Project Team's postal and email address
- TCD Green Week presentation and Arts Block stand
- Business Breakfast Briefing event on 18th February

# 1,800+ responses

Engage platform:

# 1,682 submissions



# 7,800 visitors to the page



## 8. Consultation Questions

The following section provides an overview of questions posed through the online survey, respondent profiles and responses received.

### Questions 1 & 2



#### Full name & email address

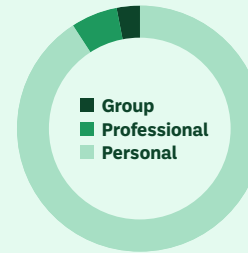
Respondents were asked to provide their full name and email address.

### Question 3



#### Personal or professional capacity of submission

According to the survey data, 1,528 respondents (90.8%) stated that they undertook the survey in a personal capacity. 6.2% (105 respondents) took part in a professional capacity, while 2.9% (49 respondents) noted that they were participating on behalf of a group or organisation.



### Question 4



#### Name of group/organisation

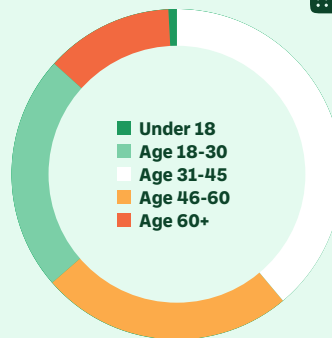
If responding on behalf of a group or organisation, respondents were asked to provide details. Of the responses provided, respondents noted that they were architects, local business owners, Dublin City Councillors and students, amongst others.

### Question 5



#### Age group

In relation to the age of respondents, the majority (39.1%, 658 respondents) indicated that they were within the 31 to 45 age group. This age group was followed by 46 to 60 at 24.7% (415 respondents), 18 to 30 at 23.1% (389 respondents), over 60s at 12.5% (210 respondents) and under 18s at 0.6% (10 respondents).



### Question 6



#### Where are you from?

Regarding the origin of the respondents, Dublin was the most popular choice with 1,321 (78.5%) stating that they were from the county. Dublin was followed by 'Ireland, outside Dublin' (239 responses, 14.2%), European Union (62 responses, 3.7%) and 'Rest of World' (60 responses, 3.6%).

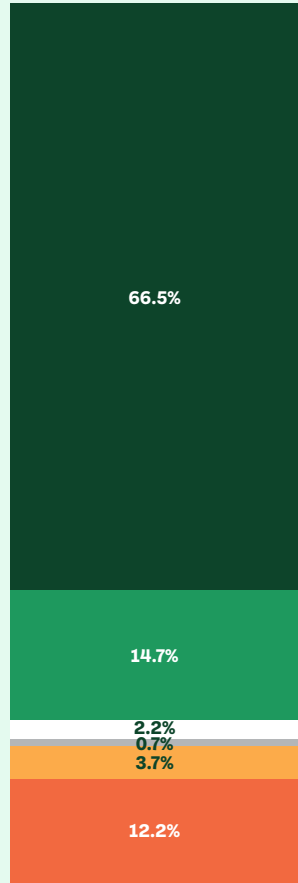


### Question 7

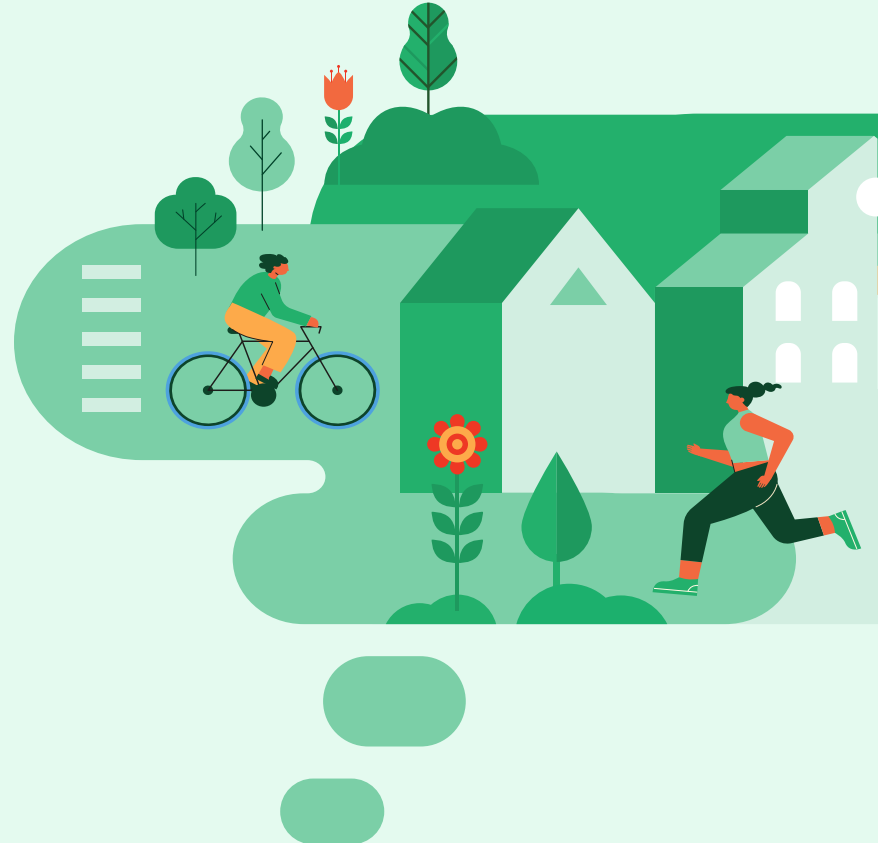


## Do you like the pre-planning design?

Question 7 asked respondents if they liked the pre-planning design. The response was overwhelmingly positive, with 66.5% (1,118 people) saying they strongly like the design. An additional 14.7% (247 respondents) somewhat like it, showing broad support overall. Responses showed that 12.2% (206 respondents) strongly dislike the design, and 3.7% (62 respondents) somewhat dislike it. Meanwhile, 2.2% (37 respondents) were neutral, and just 0.7% (12 respondents) said they were not familiar enough with the design to comment.



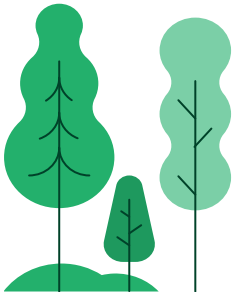
- 66.5% strongly like
- 14.7% somewhat like
- 2.2% neutral
- 0.7% not familiar
- 3.7% somewhat dislike
- 12.2% strongly dislike



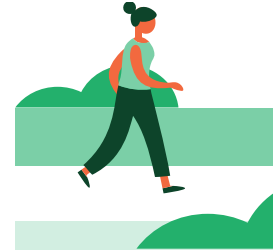
## Question 8

### What do you like most about the pre-planning design?

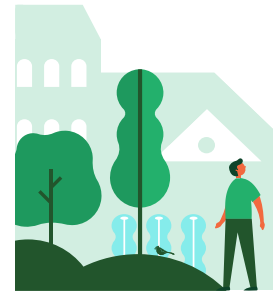
Expanding on the answers provided in Question 7, Question 8 asked respondents to provide details of what they like most about the pre-planning design. The following key themes were captured in responses.



### Greening and overall soft landscaping



### Pedestrian priority and traffic reduction



### Quality of the space, it's character and sense of place



### Seating, shelter and everyday comfort



### Potential of the space for civic use, like events or markets

## Question 9

### Is there anything not reflected in the pre-planning design that you'd like DCC and the Design Team to consider?

Question 9 asked respondents to provide details of anything not reflected in the pre-planning design that they would like Dublin City Council and the Design Team to consider. Of the 1,682 respondents, 1,132 chose to answer this question. The following key observations were captured in responses.



# 230

people asked for further consideration of items related to seating, shelter and everyday comfort



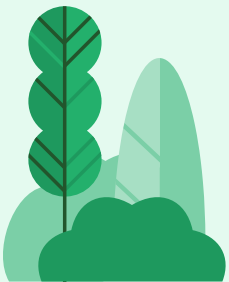
# 117

people requested more detail on public transport and general accessibility



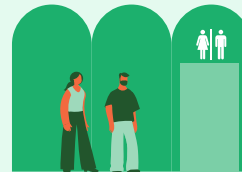
# 84

people asked about the use of the civic space for everyday uses, events and markets



# 180

people highlighted that the selection of planting and maintenance of soft landscaping should be carefully considered



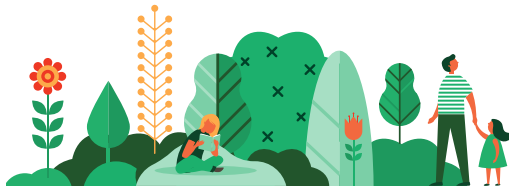
# 74

observations related to the provision of public toilets

# 9. Observations

This section presents a thematic analysis of all feedback and observations received through the pre-planning consultation. Responses were examined by sentiment, with additional consideration given to patterns across age groups, respondent type (e.g. personal or organisational submissions) and feedback channels. This approach has enabled the identification of both areas of concern and the strong, consistent themes of support for the proposals.

To reflect the balance of feedback received, the observations are grouped into supportive and those requiring further consideration. This ensures the findings accurately capture the breadth of views expressed and clearly demonstrate how both positive sentiment and identified issues are being understood and addressed as the project progresses.



**Greening and climate action**

**Transport and connectivity**

**Creation of a new civic space**

**Safety-focused design approach**

**Event management and temporary uses**

**Accessibility and inclusive design in practice**

**Audio and assistive features**

**Pedestrian priority and improved accessibility**

**Management, enforcement and day-to-day operation**

**Legible and accessible public realm design**

**Public safety and activation**

**Navigation, wayfinding and legibility**

**Heritage and placemaking**

**Pedestrian, cyclist and vehicle interaction**

**Managed and well-organised public space**

**Maintenance and long-term quality**

## 9.1 Supportive Observations

A number of strong and recurring themes of support emerged across all respondent groups, including residents, workers, visitors and stakeholder organisations. Positive sentiment was particularly evident across a broad range of age cohorts and was consistent with feedback received during earlier engagement phases.

### Supportive observations included:

- **Creation of a new civic space:** Strong and consistent support for delivering a high-quality, people-focused civic space comparable to those in other European cities, with an emphasis on inclusivity and usability for people of all ages and abilities.
- **Pedestrian priority and improved accessibility:** Widespread support for prioritising pedestrians and cyclists and reducing the dominance of private vehicles, alongside recognition that a calmer, lower-traffic environment would improve safety, comfort and accessibility for all users, particularly those with mobility and visual impairments.
- **Legible and accessible public realm design:** Positive responses to proposals for clear spatial definition, decluttering and improved legibility. Respondents welcomed features such as high-quality paving, tactile surfaces, detectable kerbs, signalised crossings and the use of tonal contrast, which support independent navigation.

- **Greening and climate action:** Support for increased planting, shading and climate-responsive design, with recognition of the role of landscaping not only in enhancing environmental sustainability but also in contributing to comfort, orientation and passive safety within the space.
- **Heritage and placemaking:** Appreciation for the emphasis on revealing and celebrating the historic and architectural significance of College Green, helping to create a distinctive and meaningful place for diverse users.
- **Safety-focused design approach:** Positive feedback on measures intended to reduce conflict between pedestrians, cyclists and vehicles, including defined routes, kerb delineation and traffic calming interventions.
- **Managed and well-organised public space:** Support for a structured approach to the location and design of street furniture, outdoor dining and event spaces, recognising the importance of consistency and management in maintaining an accessible and welcoming environment.

These supportive themes were expressed not only in headline survey responses, but also in qualitative comments, stakeholder submissions and engagement events, indicating a high level of alignment around the overall vision and ambition for Grow College Green.



Grow College Green proposes an inclusive, engaging civic space for people of all ages and abilities.



Grow College Green proposes a climate-responsive design that supports users' comfort, orientation and passive safety.

## 9.2 Observations Requiring Further Consideration

Alongside strong support, respondents identified a number of important considerations which will inform further design development. These themes were more prevalent among certain respondent groups and age profiles, underscoring the importance of nuanced analysis and ongoing engagement.

### Key themes included:

- **Transport and connectivity:** Requests for greater clarity regarding changes to public transport and the impact on the adjacent street network, alongside the need to ensure convenient access to and from the area via accessible public transport stops, set-down points and parking.
- **Navigation, wayfinding and legibility:** Concerns about the potential complexity of navigating a large civic space, particularly for visually impaired users. Respondents emphasised the need for clear, consistent and robust use of tactile paving, tonal contrast, kerb definition and spatial cues to support intuitive wayfinding. Some respondents raised concerns that the planted areas would block views of local businesses and highlighted the importance of careful consideration being given to the location of trees and planting.
- **Pedestrian, cyclist and vehicle interaction:** Ongoing concerns about potential conflict between users, with calls for clearly defined routes, stronger physical and visual separation where appropriate, and effective speed management measures to ensure safety.
- **Accessibility and inclusive design in practice:** While the ambition for accessibility was welcomed, respondents stressed the importance of consistent implementation and high-quality detailing of features such as crossings, surface finishes, gradients and kerb treatments. Walking distances and ease of movement across the space were also highlighted.
- **Management, enforcement and day-to-day operation:** Respondents raised concerns about how the space will be managed over time, particularly in relation to informal activities. This included how issues such as cycle parking would be addressed, alongside the need for a consistent and well-organised approach to outdoor dining. Other considerations included the provision of appropriate public facilities and the importance of maintaining a clear, uncluttered environment that avoids obstruction.
- **Public safety and activation:** Requests for reassurance regarding lighting, passive surveillance, anti-social behaviour and the overall management of the space, particularly during busier periods and events.
- **Event management and temporary uses:** The need for clear planning and management of events to ensure that access routes remain open and navigable for all users, including disabled persons or reduced mobility users, during large gatherings.
- **Audio and assistive features:** The importance of providing and maintaining audio cues, such as locator beacons at crossings, to support independent movement for visually impaired users.
- **Maintenance and long-term quality:** Queries regarding the ongoing upkeep of paving, tactile elements, planting, seating and other features critical to accessibility, with recognition that long-term maintenance is essential to the success of the scheme.

These observations do not detract from overall support for the project but highlight areas where additional detail, refinement and reassurance will be required as the design evolves in advance of the statutory planning process.

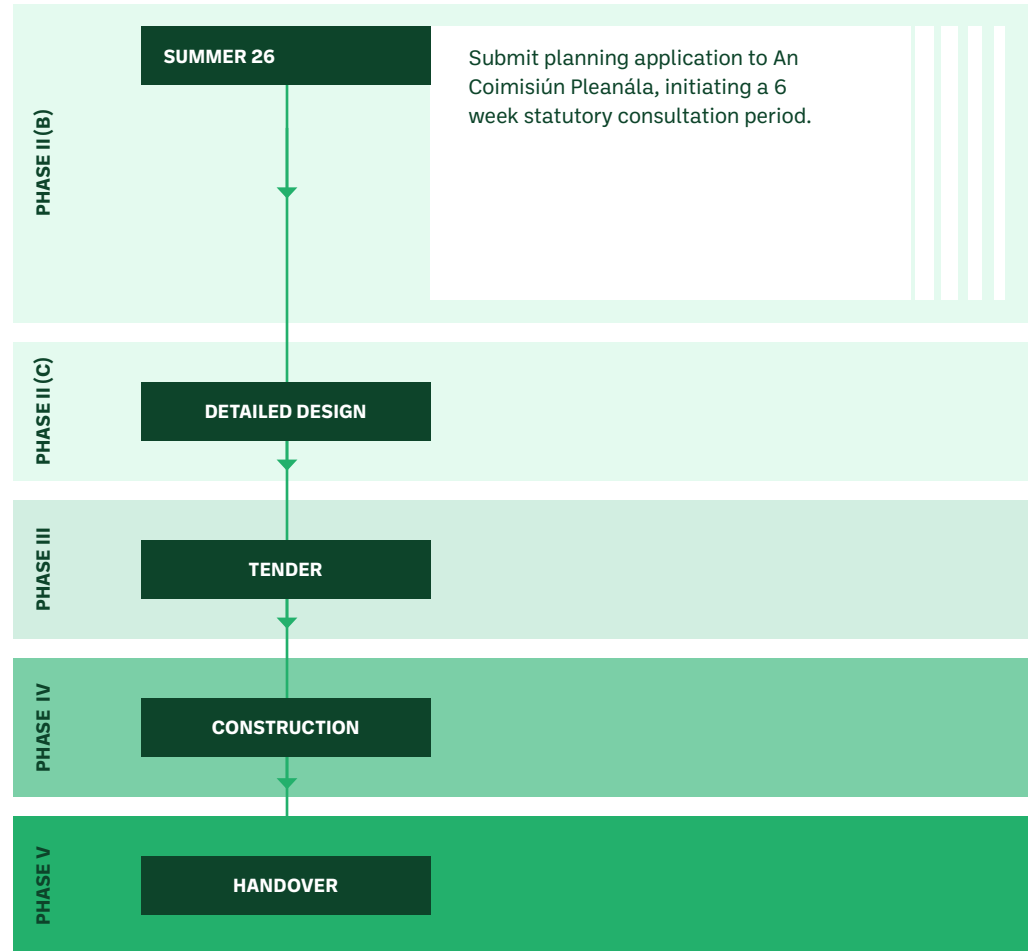
Taken together, the supportive themes and items of concern raised through the consultation provide a clear and evidence-based foundation for refining the Grow College Green proposals, ensuring that the final design responds both to the strong public mandate for change and to the practical concerns identified by stakeholders.

# 10. Next steps and timelines

Dublin City Council is progressing towards the submission of a planning application for Grow College Green to An Coimisiún Pleanála in Summer 2026. This will mark the start of the formal planning process, which will include a 6 week statutory consultation period. In advance of this submission, the Project Team will draw on the feedback and insights gathered during the pre-planning consultation to review and further refine the proposed design to address the items raised.

Dublin City Council and the Integrated Design Team will continue to engage with key stakeholders and the wider public during the upcoming detailed design stage. Particular focus will be given to those who raised concerns during the pre-planning consultation, to ensure these items are fully considered and addressed as the design is developed further.

Subject to the granting of planning permission, the project will then move onto the tender, construction and handover phases of the project, it is intended that consultation with key stakeholders will continue throughout all these stages.





# 11. Conclusion

This non-statutory pre-planning consultation has demonstrated strong public interest and broad support for the Grow College Green proposal. The depth and quality of feedback received reflects the importance of College Green to the general public and underscores the value of meaningful engagement in shaping its future.

As Dublin City Council prepares its formal planning application for Summer 2026, the insights gathered through this process will directly inform the refinement of the design and the next stages of delivery, ensuring that Grow College Green evolves as an inclusive and climate-responsive public space for the city.

DCC and the Design Team would like to thank all of the consultation participants for taking the time to give their views on this transformational project and look forward to ongoing engagement.



For detailed project information go to:

<https://engage.dublincity.ie/en-IE/projects/grow-college-green>

