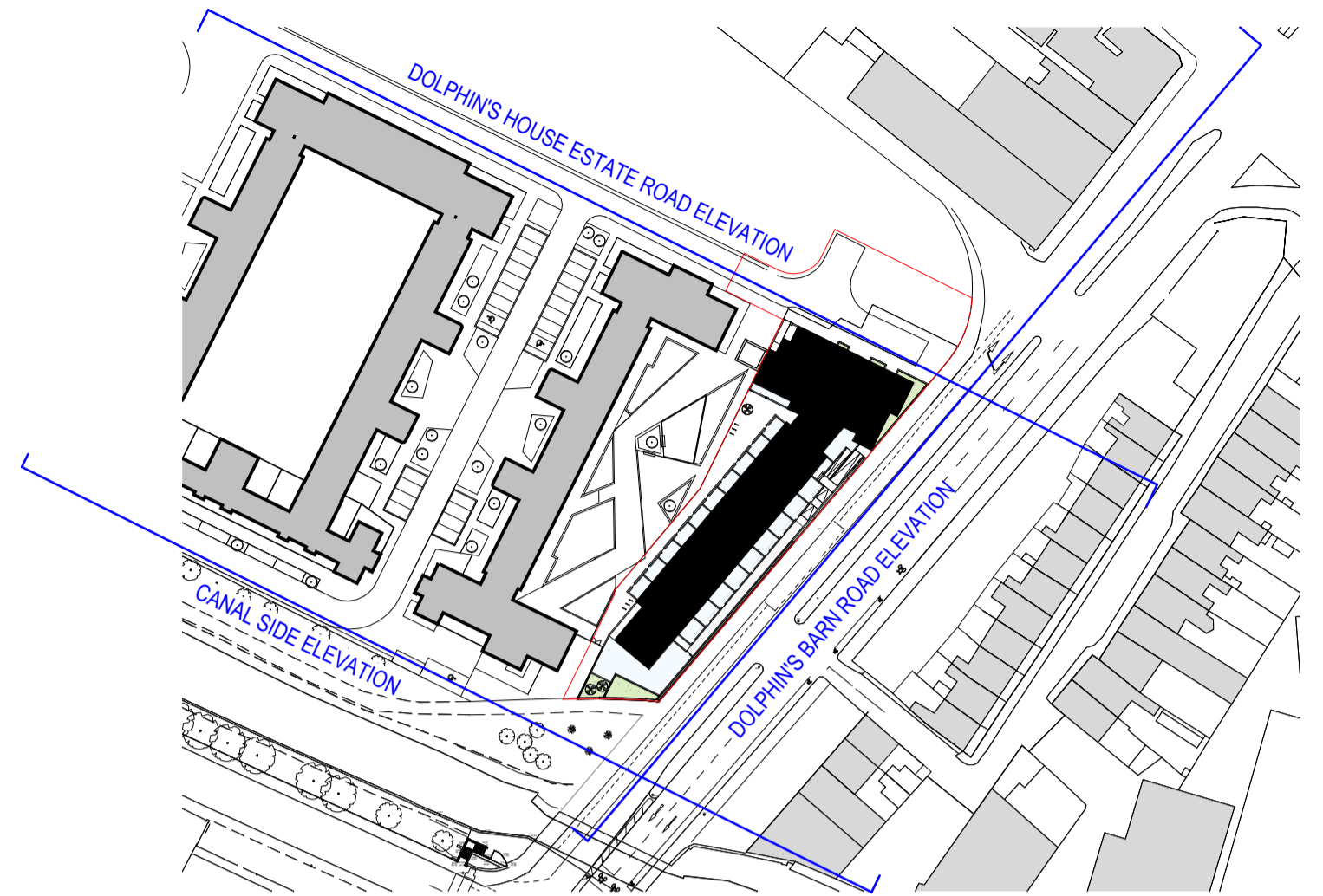


IMPORTANT  
 1. DO NOT SCALE FROM THIS DRAWING.  
 2. WORK ONLY FROM FIGURED DIMENSIONS.  
 3. ALL ERRORS & OMISSIONS TO BE REPORTED TO THE ARCHITECT.  
 4. THIS DRAWING IS TO BE READ IN CONJUNCTION WITH ALL OTHER DRAWINGS.  
 5. IF UNSURE, CONTACT THE ARCHITECT.

NOTES



1 Contextual Elevation Canal Side  
 1:250



2 Contextual Elevation Dolphin's Barn Road  
 1:250



3 Contextual Elevation Estate Road  
 1:250

Ver	Date	Revision Description
1	01.10.2025	Part 8
0	17.06.2025	Pre Part 8

CONSULTANT

CLIENT

**Dublin City Council**  
 Comhairle Cathrach Bhaile Atha Cliath  
 HOUSING & COMMUNITY SERVICES, CIVIC OFFICES, WOOD QUAY, DUBLIN 8, IRELAND  
 www.dublincity.ie T. +353 (0)1 222 3528 F. +353 (0)1 222 2084

PROJECT LEAD

RANNOG AILTIRE NA CATHRACH  
**CITY ARCHITECTS DIVISION**  
 CITY ARCHITECTS DIVISION, CIVIC OFFICES, WOOD QUAY, DUBLIN 8, IRELAND  
 www.dublincity.ie T. +353 (0)1 222 3528 F. +353 (0)1 222 2084

PROJECT

**1B Dolphin's House Estate**

DESIGNED BY: Designer  
 APPROVED BY: Approver  
 DRAWN/ CHECKED BY: Author

CODE

**P3** PLANNING

DRAWING DESCRIPTION

Location: Dolphin House Estate, Dublin 8  
 Spatial Zone: Dolphin 1B -  
 Sheet Name: Context Elevations

DRAWING NUMBER

**DMP-1B-ZZZ-DR-DCC-AR-2001**

SCALE (A1)  
 As indicated

PURPOSE  
**P3**

REVISION  
**1**