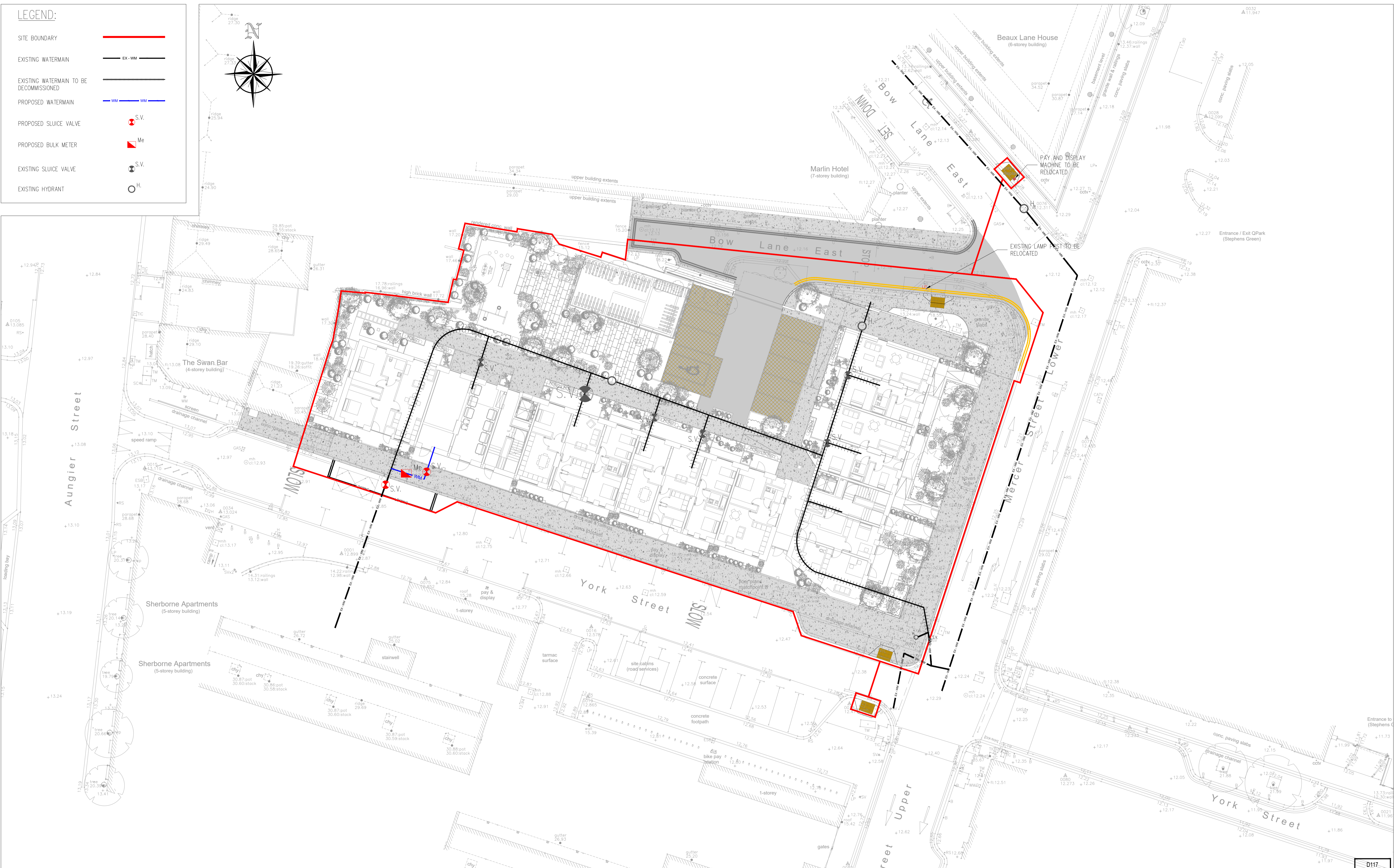
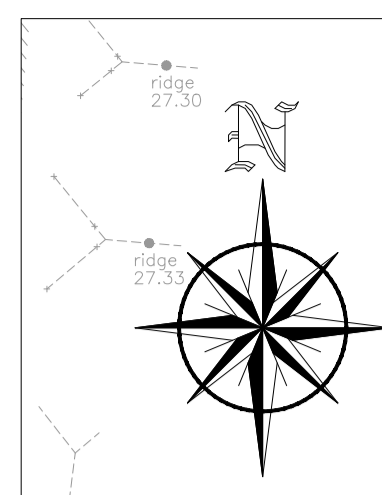


LEGEND:

- SITE BOUNDARY —
- EXISTING WATERMAIN — EX-WM
- EXISTING WATERMAIN TO BE DECOMMISSIONED - - -
- PROPOSED WATERMAIN — WM
- PROPOSED SLUICE VALVE ● S.V.
- PROPOSED BULK METER ■ Me
- EXISTING SLUICE VALVE ● S.V.
- EXISTING HYDRANT ○ H.



**PLANNING DRAWING.
NOT FOR CONSTRUCTION.
ALL LEVELS GIVEN ARE
RELATIVE TO ORDNANCE DATUM.
THIS DRAWING HAS BEEN ISSUED FOR INFORMATION
PURPOSES ONLY AND MUST NOT BE USED
FOR CONSTRUCTION UNDER ANY CIRCUMSTANCES**

- NOTES**
1. For setting out refer to Architect's drawings.
 2. This drawing to be read in conjunction with all other Architectural and Engineering drawings and all other relevant drawings and Specifications.
 3. **DO NOT SCALE THIS DRAWING.** Use figured dimensions only.
 4. No part of this document may be reproduced or transmitted in any form or stored in any retrieval system of any nature without the written permission as copyright holder except as agreed for use on the project for which the document was originally issued.
 5. Ordnance Survey Ireland Licence Number EN 0074025

Rev. No	Date	REVISION NOTE	Dim. By	Chkd. By
P1	28.01.2025	ISSUED FOR PLANNING	MM	SS
P2	02.07.2025	UPDATED AND ISSUE FOR PLANNING	MM	SS

DTA Architects	
Glover Court Dublin	
Proposed Watermain Layout	
D117-CSC-XX-XX-DR-C-0003	
Date	APRIL 2024
Dim by	MM
Chkd by	NB
Aprvd by	MMCE
Scale	1:200 @A1
Revision	P2

CS Consulting Group
DUBLIN | LONDON | LIMERICK

Head Office
19-22 Dame Street, Dublin 2.
T: +353 (0)1 5480863
e: info@csconsulting.ie
w: www.csconsulting.ie

Quality Environment Health & Safety
I.S. EN ISO 9001:2008
I.S. EN ISO 14001:2004
I.S. EN ISO 50001:2011
OHSAS 18001:2007