

GROW COLLEGE GREEN

Pre-planning stage

February 2026



Comhairle Cathrach
Bhaile Átha Cliath
Dublin City Council



Údarás Náisiúnta Iompair
National Transport Authority



Reimagining the historic heart of Dublin

Our mission

Grow College Green is a flagship project to reimagine the historic heart of our capital city as a destination for everyone, not only a place to shop, work, gather and celebrate, but also a space to pause, breathe and connect.



**GROW
COLLEGE
GREEN**



Where Dublin meets

From the Viking Era to the present day, College Green has stood at the heart of Dublin, witness to demonstrations and celebrations, political and social gatherings, commerce and trade, education and everyday life.

Today College Green sits framed by Trinity College, the Bank of Ireland building and commercial streets that have carried Dublin through centuries of change. Grow College Green will celebrate the history of the area by creating a new public space for everyone.

Historic layers have informed and inspired the design



15th century

Hoggen Green
- a significant ceremonial public space



16th century

Late medieval city & Ireland's first university



17th century

'Green Belt' as a pursuit to preserve Hoggen Green, Stephen's Green and Oxmantown Green



18th century

Demolition of Chichester House and the construction of the new Parliament Building. Ceremonial route between the Castle, Parliament and University-Wide Street Commission



19th century

Transformation from a banking hub into an assortment of commercial buildings

20th century

Modern interventions and a changing style of architecture

The project is guided by three pillars:



A liveable & vibrant city

A city that feels inviting and comfortable, a place where people can unwind, meet and enjoy everyday moments. The design encourages culture, conversation and connection from morning through evening. It will become a natural gathering point for Dubliners and visitors, celebrating the city's heritage while offering open spaces where everyone can pause and feel at ease in their surroundings.



A connected & accessible city

The plan prioritises people by creating calmer, safer routes for walking and cycling through the historic heart of Dublin. Streets will feel clearer, more intuitive and support independent navigation, linking seamlessly with public transport and nearby neighbourhoods. By simplifying movement, the design creates a more inclusive, comfortable and user-friendly experience, ensuring the city feels connected at every step.



A resilient & healthy city

Thoughtful, climate-responsive design helps manage rainwater, limit heat build-up, reduce noise and improve air quality. Green features support biodiversity, bringing nature into the heart of Dublin while enhancing its historic character. Together these elements create a healthier, more resilient urban environment that adapts to future climate challenges and supports the wellbeing of everyone.

You spoke, we listened

Since mid-2024, we've been talking with local businesses, residents, students, children and Disabled Persons Organisations.

Consultation hasn't been a one-off moment but an ongoing conversation, helping us test ideas, listen carefully and improve the design along the way.

Through two rounds of public consultation and more than 100 meetings, walkabouts and drop-in events so far, your feedback has guided every stage of the project. What we've heard helped shape access and movement, protect heritage, add greenery and seating and define the overall feel of the space.

Built with the city and for the city, this design will continue to evolve as we listen and learn



86%
of respondents
showed strong
support for
the design



2879
submissions
received



100+
in person
stakeholder
meetings

Public feedback has informed how we think about:



The balance between movement through, and activity within, the space



How College Green works as a civic space for events and daily life



How heritage is protected and given renewed pride of place within the city



How greenery and seating make space to pause and connect



How College Green and Dame Street can feel welcoming, safe and easy to use

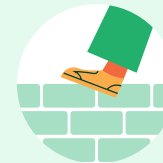
How recent consultation has shaped the design:



A more open civic space for visitors to enjoy visual and architectural features



Careful design of legible access routes, supporting independent movement through the space



Retaining historic stone, kerbs and cobbles while prioritising accessibility and usability



A project shaped with the city, for the city, listening, refining and evolving together



What's new?

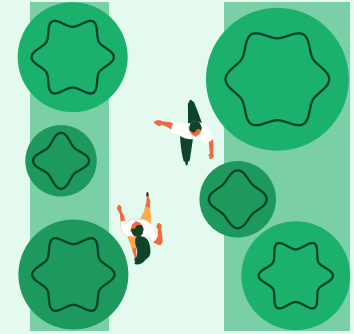
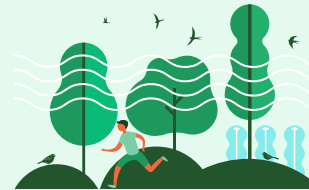
The updated design for Grow College Green is built around what people told us they want from the heart of their city.

From the outset, the ambition has been to create a city centre that works better for everyone; a place that is safer, greener, and more accessible, and more enjoyable at every moment of the day, a space that feels good to spend time in. Grow College Green will create 17,000m² of pedestrian priority public space, add 75 new trees and introduce 1,400m² of landscaped areas, increasing greening on Dame Street from 0% to 30%. This increased greening will improve air quality, reduce noise and promote biodiversity. Together, these spaces will become lively, people-focused areas where you can pause, meet friends, enjoy events or take in the city's landmarks in a calmer, safer setting.



17,000m² of new public realm

Increased 'greening' will improve air quality



30% greening across the Dame Street area

A transformed sensory experience where children play, water moves and birds sing

Grow College Green will...

Provide a world-class public space

The updated design for Grow College Green is shaped by what people said they want from the heart of their city. It creates a place that's easy to move through, enjoyable to spend time in, and welcoming from morning to night.

The Grow College Green project will form a series of lively, people focused spaces, that invite you to gather, meet friends, enjoy events or take in the city's landmarks in a calmer, safer setting. The space will reflect the rhythm of the day, peaceful at quieter times and energetic when hosting events, cultural activity or major civic moments.

Celebrate heritage & identity

Rooted in Dublin's past, the design for Grow College Green takes a significant step forward in reimagining one of Dublin's most historic and important public spaces. Subtle pavement patterns, historic materials and gentle shifts in surface reveal the layers of history beneath. Improved views of landmark buildings, including Trinity College and the Bank of Ireland, restore the sense of arrival and civic identity that this historic location deserves. Together, these elements celebrate the character of the area while ensuring the new space feels distinctly and authentically Dublin.



↑↓ *A rhythm of green spaces and active places.*



Proposed design



- Project boundary
- 1.** Civic space
- 2.** Trinity crossing
- 3.** Henry Grattan statue
- 4.** Access route
- 5.** Artistic water feature
- 6.** Seating area
- 7.** Widened footpath
- 8.** Open space
- 9.** Thomas Davis statue & Memorial Fountain
- 10.** Crossing point
- 11.** Seating
- 12.** Activity area/ pocket space
- 13.** Planted area
- 14.** Open lawn
- 15.** Rain garden
-  Existing tree
-  Proposed tree

A place to pause, breathe & connect

Green edges, comfortable seating and generous planting will create an environment that encourages people to stop, relax and connect with the city around them. Whether you're bringing your children to play, sitting with friends, taking a break from work or simply enjoying the openness of the space, the design supports both calm moments and vibrant social activity. Flexible open spaces also allow for everyday gatherings alongside larger civic and cultural events.



Encouraging biodiversity and inviting wildlife to share our city.



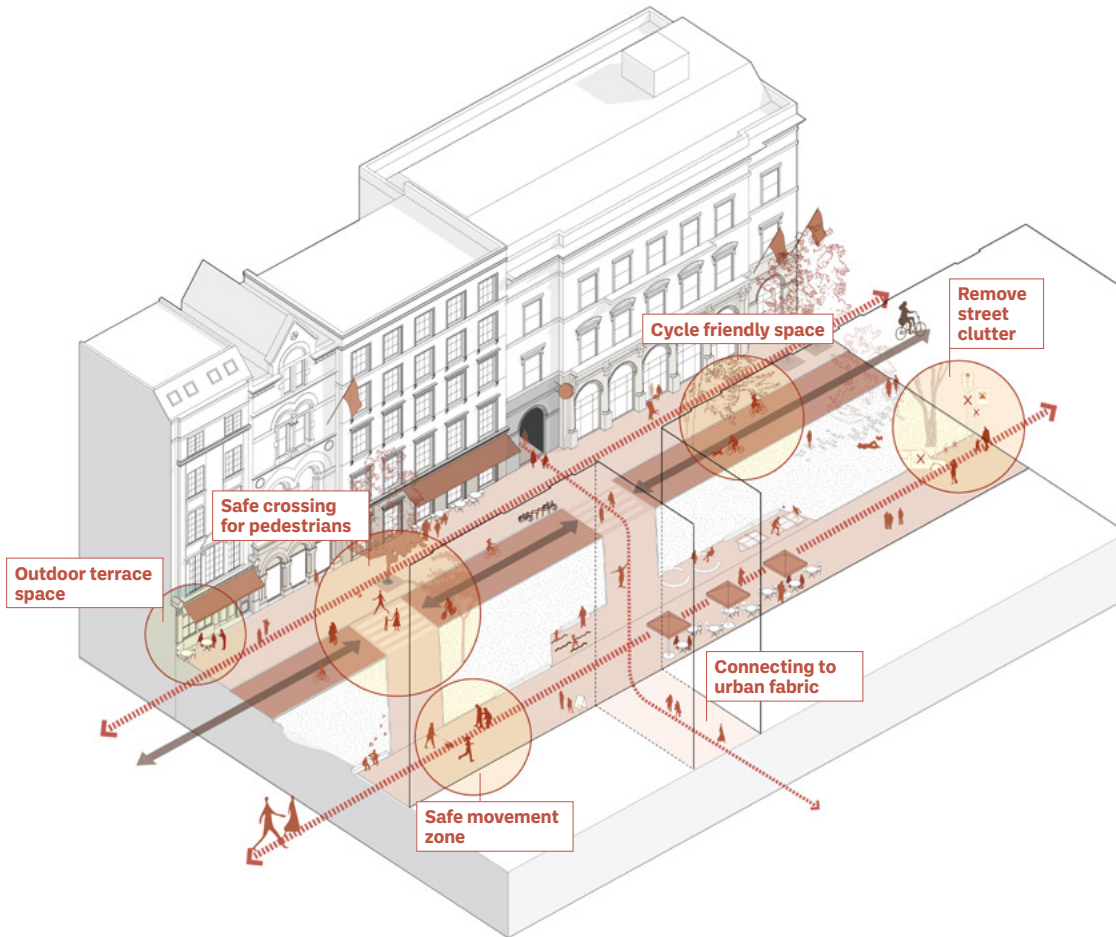
A place to sit, listen and enjoy a calm moment.



Enjoy the playful spaces and connect with the city.







Movement, connection & accessibility

The new plan makes the area safer and more pleasant by removing general traffic and creating a pedestrian priority area. Clearer routes, better crossings, sensory cues and tactile materials support confidence and independence for people of all ages and abilities. Whether commuting, visiting or exploring the city with family or friends, movement will feel seamless and intuitive. College Green will become a connected, accessible heart of Dublin built for people, shaped by people, and designed to be enjoyed every day.

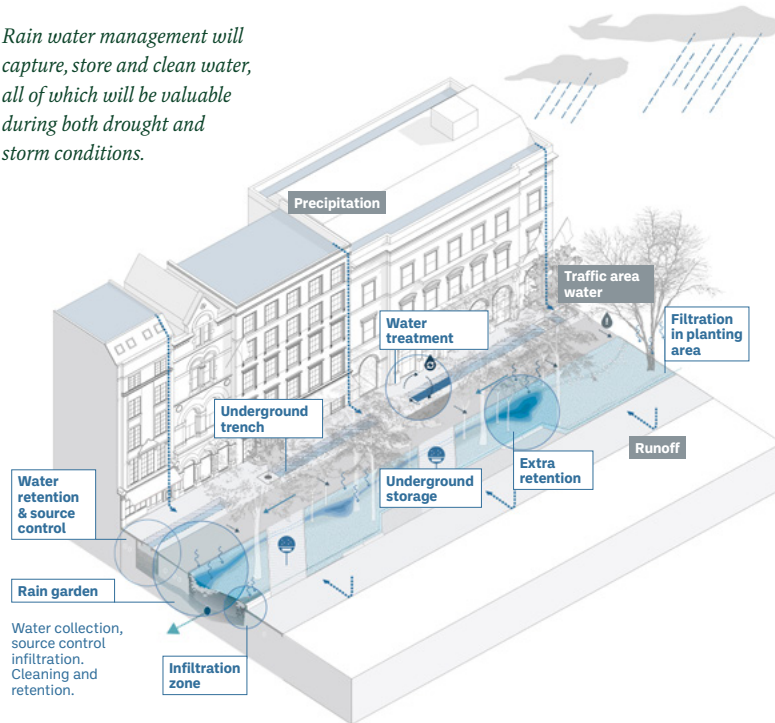
Working with and learning from people with disabilities. Understanding challenges and developing space through a process of universal design.

Support sustainability & climate action

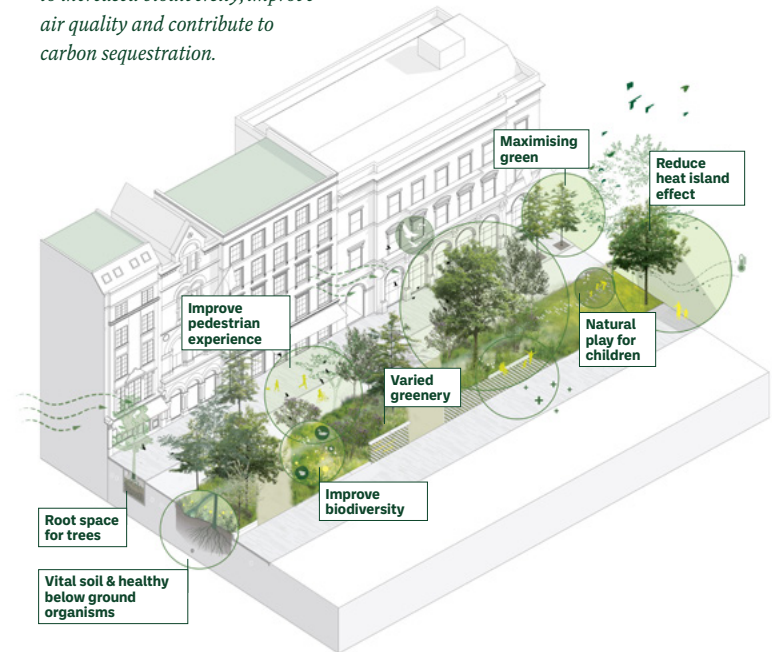
Sustainability sits at the heart of the redesign. More trees, shade and climate resilient planting make the area healthier and better equipped for warmer summers. Nature based drainage slows and absorbs rainfall, helping

to reduce flooding and support long term climate resilience. High quality, sustainable materials and safe cycle routes contribute to Dublin's climate goals, ensuring the space is environmentally responsible now and into the future.

Rain water management will capture, store and clean water, all of which will be valuable during both drought and storm conditions.

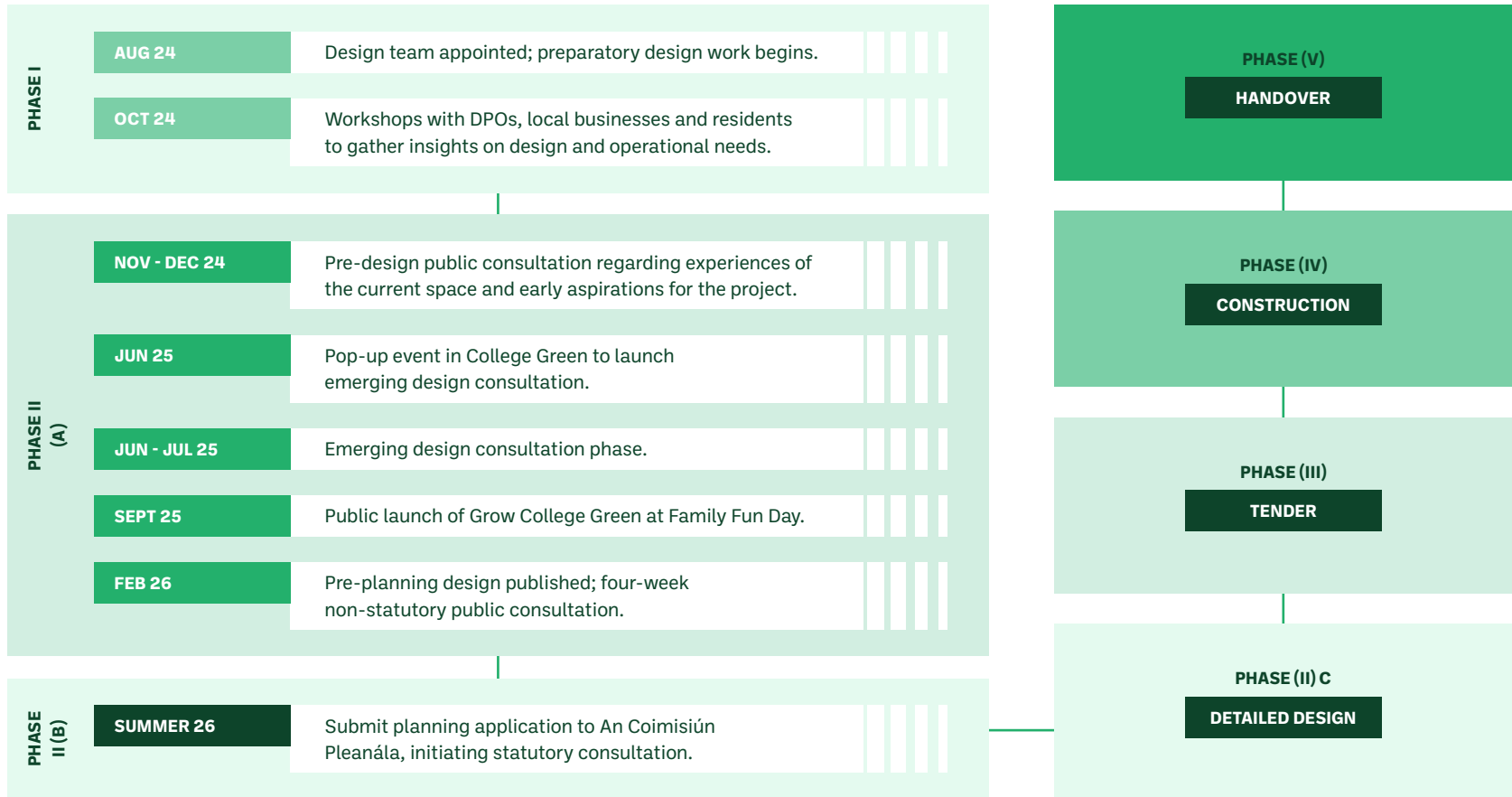


New urban biotopes will contribute to increased biodiversity, improve air quality and contribute to carbon sequestration.





Project timeline






Share your ideas

We want to continue to hear from you



Engage with us in one of the following ways:


-  By filling out the online survey at: <https://engage.dublincity.ie/en-IE/projects/grow-college-green>
-  By post to Grow College Green Project Team, Dublin City Council, Civic Offices, Block 2, Floor 7, Dublin 8.
-  By completing a comment sheet at our consultation table at the Atrium, Block 4, Floor 0, Civic Offices, Wood Quay, Dublin 8.

The closing date for the consultation is midnight, March 11th 2026.

To stay up to date with the project go to:

-  www.dublincity.ie/grow-college-green

For detailed project information go to:

-  <https://engage.dublincity.ie/en-IE/projects/grow-college-green>

The design team

Grow College Green is being led by Dublin City Council in partnership with the National Transport Authority. The project is supported by a multi-disciplinary design team headed by Irish architects Scott Tallon Walker and OKRA, urban design and landscape architects from the Netherlands, along with specialists in planning, lighting, sustainable drainage systems, heritage, accessibility and community engagement.

LED BY:



CO-FUNDED AND SUPPORTED BY:



MULTIDISCIPLINARY DESIGN TEAM LED BY:

Scott Tallon Walker Architects

OKRA



CIVIC



SYSTRA



Pritchard
Themis

MODEL
WORKS



FIONNULA
ROGERSON
ARCHITECTS

TONY KILLEEN
EVENT
MANAGEMENT

ARBORIST
ASSOCIATES



For detailed project information go to:

<https://engage.dublincity.ie/en-IE/projects/grow-college-green>

