

Cromcastle Court SHD

Acoustic Design Statement
08 August 2025

WDA240526RP_B_01

www.wdacoustics.com

Dublin City Council





Notice

This document is prepared on behalf of Dublin City Council to accompany a Part 8 proposal for the development at Cromcastle Court, Cromcastle Park, Kilmore, Dublin 5 and should not be reproduced, edited or copied in any form without the permission of Wave Dynamics. This document relates to the acoustic design elements of the project which Wave Dynamics were engaged on, it does not consider any of the other engineering services on the project including but not limited to fire, structural, mechanical and electrical design. Wave Dynamics assumes no responsibility to any other party arising in connection with this document and its contents.

Document Information

Project Name:	Cromcastle Court
Address:	Cromcastle Park, Kilmore, Dublin 5
Project Number	WDA240526
Report Title	Acoustic Design Statement
Client	Dublin City Council

Document History

Revision	Status	Description	Author	Reviewer	Issue Date
A	Issued	Acoustic Design Statement			03/04/2025
			Cathal Reck	James Cousins	
B	Issued	Acoustic Design Statement			08/08/2025
			Cathal Reck	James Cousins	

Dublin Office

Wave Dynamics
Unit 302 Nesta Business Centre,
Old Airport Road,
Santry, Dublin 9
D09 HP96

Wexford Office

Wave Dynamics
Unit 14 Enterprise Centre,
Gorey Business Park,
Ramstown Gorey, Co.
Wexford
Y25 Y2C8

Cork Office

Wave Dynamics
Cube Building,
Monaghan Rd,
Cork,
T12 H1XY

Phone (IRL): +353 (0)1 9125070

Phone (UK): +44 20 8157 2967

Email: info@wdacoustics.com

Web: www.wdacoustics.com

Executive Summary

Wave Dynamics were engaged by Dublin City Council as the acoustic consultants to provide an Acoustic Design Statement including an Inward Noise Impact, Construction Noise Assessment and Operational Noise Assessment for the planning application of a proposed new residential development at Cromcastle Park, Kilmore, Dublin 5.

The project consists of the redevelopment of the existing Cromcastle Court and Old Coal Yard sites, and the construction of 7 no. apartment blocks, ranging in height from 4-6 storeys, containing a total of 152 apartments at the Cromcastle Court/Old Coal Yard Sites, Dublin 5. The site is bounded by Cromcastle Park, Kilmore Road and Kilbarron Road, Dublin 5. The site is split by Kilmore Road, with a single block of Age Friendly proposed to the East of Kilmore Road.

The existing 1.63 ha site currently comprises of 3 no. 4 storey apartment blocks and a welfare depot on Cromcastle Court.

The proposed development, which will be managed by Dublin City Council, comprises of:

- The demolition of the existing Cromcastle Court blocks, ancillary structures, boundary walls/railings and site clearance works, and the demolition of welfare depot.
- Construction of 152 homes between 2 no. sites, comprising of 90 no. 1 bed apartments, 47 no. 2 bed apartments and 15 no. 3 bed Duplexes.
- This consist of 118 new homes on Cromcastle Court across 6 no. buildings between 4 and 6 storeys, and 34 new age friendly homes proposed on the Old Coal Yard site, within 1 building, between 4 and 5 storeys.
- Breakdown of homes per block as follows
 - Block A1 is 5 storeys with 18 units (9 no. 1 bed units and 9 no. 2 bed units)
 - Block B1 is 4 storeys with 27 units (16 no. 1 bed units, 3 no. 2 bed units and 8 no. 3 bed Duplex units)
 - Block C1 is 5 storeys with 18 units (9 no. 1 bed units and 9 no. 2 bed units)
 - Block D1 is 4 storeys with 15 units (11 no. 1 bed units and 4 no. 3 bed Duplex units)
 - Block E1 is 6 storeys with 20 units (5 no. 1 bed units and 15 no. 2 bed units)
 - Block F1 is 4 storeys with 20 units (6 no. 1 bed units, 11 no. 2 bed units & 3 no 3 bed Duplex units)
 - Block G1 is between 4 and 5 storeys with 34 units (32 no. 1 bed, UD units and 2 no. 1 bed UD+ units)
- A community facility (132sqm) at the ground floor of E1 with associated external spill out space (124sqm) are also proposed as part of the development to fulfil COU25 requirements of the DCC Development Plan.
- 244 long stay secured bicycle spaces, with 76 short stay external bicycle parking spaces
- 57 no. residential parking spaces, including 4 accessible parking spaces, mixed between on-street and off-street parking spaces.
- Provision of public and private open public lighting, upgraded public realm, 1741.5sqm of public open space, and 3376.1sqm of secure communal open space split between an 882.6sqm amenity space for Block G1, and an 2493.5sqm enclosed courtyard spaces for the remaining blocks.
- Construction of new ESB substation and meter rooms, stores, bin and bicycle storage, plant rooms, ancillary structure, and
- All ancillary road, site services, development works and necessary enabling works above and below ground.

Inward Noise Impact Assessment

A Stage 1 and Stage 2 ProPG assessment have been undertaken. As part of the stage one assessment to categorise the site, a baseline noise survey was undertaken to measure the existing noise levels. Following the baseline noise survey a site noise model of the road noise impact was produced and calibrated with the site measurements. A review of the noise levels on the site was conducted, this included the L_{AFmax} and L_{Aeq} , the site has subsequently been characterised as medium to high risk at the southern elevations of Blocks B and C, along

with the southern and eastern elevations of Block A and G, and medium to low risk across the remainder of the site. Mitigation measures are required to control the onset noise levels of the facades located in the medium to high risk contour, this mitigation has been developed in the form of façade envelope performance and the provision of external communal amenity space that achieves compliance with external noise levels.

Break-in noise calculations to predict the internal noise levels from road traffic noise were conducted as part of the assessment. Consideration has also been given to the future growth of the road network. Following the assessment, the building envelope performance requirements were determined to achieve adequate internal noise levels. The performance specification for the building envelope has been provided in this report which includes the external walls, glazing, roof and ventilation requirements.

External Amenity Noise Levels

The external amenity spaces on the development includes balconies and communal amenity spaces at ground level. Appropriate amenity has been provided on the development for residents using a combination of the balconies on suitable facades and the communal amenity space on ground level. This is in line with element 3(v) of ProPG.

Based on the recommendations in this report it is predicted that the internal and external noise levels will achieve the targeted noise levels in line with BS 8233:2014 and ProPG 2017 guidance.

Construction Noise Impact

The construction noise impact is predicted to exceed the BS 5228 requirements **without any mitigation** measures for the Site Set Up, Demolition, Substructure and Superstructure stages of the project.

General and site-specific mitigation measures have been provided in this report to bring the construction noise levels down within the limits of BS 5228. Following **the noise mitigation recommendations in this report, the construction phase is expected to meet the requirements** of BS 5228 based on the information provided to WDA.

In addition to the mitigation measures, guidance has been provided in this report for construction noise monitoring during the construction period to manage noise levels from construction noise.

Vibration Monitoring

Vibration monitors should be considered during the demolition and substructure phase of the development between the site and NSL 2 to manage vibration during the construction period.

Operational Noise

An operational noise impact assessment from the noise generated in the communal amenity space, the traffic generated on the development and car parking was developed. It is predicted that the development will not cause a negative noise impact on the nearby noise sensitive locations. The mechanical plant and equipment specification is not available at this stage of the project, the proposed method of heating, cooling and ventilation is not currently available. Specific noise limits have been provided in this report for mechanical plant and equipment, at design development stage once the plant and equipment information is available it should be assessed for compliance with the criteria outlined in this report.

Table of Contents

1	Introduction	1
1.1	Statement of Competence	2
2	Site Description	3
3	Project Criteria	4
3.1	Inward Noise Impact Assessment Criteria.....	4
3.2	Construction Noise Assessment Criteria	7
3.3	Construction Vibration Criteria.....	9
3.4	Operational Noise Criteria	9
4	ProPG Stage 1 – Assessment	11
4.1	Baseline Noise Survey.....	12
4.1.1	Site Description and Measurement Locations	12
4.1.2	Survey Methodology and Personnel.....	12
4.1.3	Noise Measurement Equipment	13
4.1.4	Subjective Noise Environment.....	13
4.2	Noise Measurement Results.....	14
4.3	Weather Conditions for Monitoring Period.....	15
4.4	Future Noise Levels	15
4.5	ProPG Stage 1 – Initial Risk Assessment	15
5	ProPG Stage 2- Full Assessment	17
5.1.1	Element 1: Good Acoustic Design Process.....	17
5.1.2	Discussion of Good Acoustic Design.....	17
5.2	Element 2 – Assessment of Internal Noise Levels	18
5.2.1	Noise Prediction Modelling	18
5.2.2	Predicted Road Noise Levels	18
5.2.3	Building Envelope Specification	22
5.3	Element 3- External Amenity Spaces	24
5.4	Element 4- Assessment of Other Relevant Issues	24
5.4.1	Compliance with Relevant National and Local Policy	25
5.4.2	Magnitude and Extent of Compliance with ProPG	25
5.4.3	Likely Occupants of The Development.....	25
5.4.4	Acoustic Design v Unintended Adverse Consequences	25
5.4.5	Acoustic Design v Wider Planning Objective.....	25
5.5	Stage 2 Assessment Conclusion	25
6	Construction Noise Assessment.....	26
6.1	Noise Sensitive Locations and Noise Limits	26

6.2	Construction Noise Predictions.....	27
6.3	Noise Mitigation Recommendations	29
6.3.1	General Recommendations	29
6.3.2	Site Specific Recommendations.....	31
6.4	Vibration.....	31
6.4.1	Vibration Monitoring.....	32
7	Operational Noise Impact	33
7.1	Assessment of Operational Noise Impact	34
7.1.1	Daytime Scenario	34
7.1.2	Night-time Scenario	36
7.1.3	Modelling Assumptions.....	38
7.1.4	Mechanical Plant & Equipment.....	38
8	Conclusion	39
	Appendix A – Glossary of Terms	41
	Appendix B – Façade Mark Ups	42

1 Introduction

Wave Dynamics were engaged by the Dublin City Council as the acoustic consultants to undertake an Inward Noise Impact, Construction Noise Assessment and Operational Noise Assessment for the planning application for a proposed new residential development at Cromcastle Park, Kilmore, Dublin 5.

The project consists of the redevelopment of the existing Cromcastle Court and Old Coal Yard sites, and the construction of 7no. apartment blocks, ranging in height from 4-6 storeys, containing a total of 152 apartments at the Cromcastle Court/Old Coal Yard Sites, Dublin 5. The site is bounded by Cromcastle Park, Kilmore Road and Kilbarron Road, Dublin 5. The site is split by Kilmore Road, with a single block of Age Friendly proposed to the East of Kilmore Road.

The existing 1.63 ha site currently comprises of 3 no. 4 storey apartment blocks and a welfare depot on Cromcastle Court.

The proposed development, which will be managed by Dublin City Council, comprises of:

- The demolition of the existing Cromcastle Court blocks, ancillary structures, boundary walls/railings and site clearance works, and the demolition of welfare depot.
- Construction of 152 homes between 2 no. sites, comprising of 90 no. 1 bed apartments, 47 no. 2 bed apartments and 15 no. 3 bed Duplexes.
- This consist of 118 new homes on Cromcastle Court across 6 no. buildings between 4 and 6 storeys, and 34 new age friendly homes proposed on the Old Coal Yard site, within 1 building, between 4 and 5 storeys.
- Breakdown of homes per block as follows
 - Block A1 is 5 storeys with 18 units (9 no. 1 bed units and 9 no. 2 bed units)
 - Block B1 is 4 storeys with 27 units (16 no. 1 bed units, 3 no. 2 bed units and 8 no. 3 bed Duplex units)
 - Block C1 is 5 storeys with 18 units (9 no. 1 bed units and 9 no. 2 bed units)
 - Block D1 is 4 storeys with 15 units (11 no. 1 bed units and 4 no. 3 bed Duplex units)
 - Block E1 is 6 storeys with 20 units (5 no. 1 bed units and 15 no. 2 bed units)
 - Block F1 is 4 storeys with 20 units (6 no. 1 bed units, 11 no. 2 bed units & 3 no 3 bed Duplex units)
 - Block G1 is between 4 and 5 storeys with 34 units (32 no. 1 bed, UD units and 2 no. 1 bed UD+ units)
- A community facility (132sqm) at the ground floor of E1 with associated external spill out space (124sqm) are also proposed as part of the development to fulfil COU25 requirements of the DCC Development Plan.
- 244 long stay secured bicycle spaces, with 76 short stay external bicycle parking spaces
- 57 no. residential parking spaces, including 4 accessible parking spaces, mixed between on-street and off-street parking spaces.
- Provision of public and private open public lighting, upgraded public realm, 1741.5sqm of public open space, and 3376.1sqm of secure communal open space split between an 882.6sqm amenity space for Block G1, and an 2493.5sqm enclosed courtyard spaces for the remaining blocks.
- Construction of new ESB substation and meter rooms, stores, bin and bicycle storage, plant rooms, ancillary structure, and
- All ancillary road, site services, development works and necessary enabling works above and below ground.

Appendix A outlines a glossary of the acoustic terminology used in this report.

1.1 Statement of Competence

This report was completed by Wave Dynamics, an acoustic consultancy that specialises in noise and vibration. Our consultants have completed numerous similar projects in the Ireland the UK and Europe.

This assessment and report were completed by Cathal Reck | Acoustic Consultant, Cathal has experience of numerous planning stage noise impact assessments. Cathal's qualifications include: BSc (Hons) in Music Technology & Production, IOA Certificate of Competence in Environmental Noise Measurements, and a certificate in Building Acoustics and Noise Control. Cathal is a member of the Institute of Acoustics (TechIOA) and a SITRI certified sound insulation tester.

The peer review was completed James Cousins, Managing Director | Principal Consultant with Wave Dynamics who has extensive experience in assessing noise impacts. James is an experienced acoustic consultant. His qualifications include; BSc (Hons) in Construction Management and Engineering, Pg Cert in Construction Law and Diploma in Acoustics and Noise Control (Institute of Acoustics) and an IOA Competence Cert in Building Acoustic Measurements. James is a member of both Engineers Ireland (MIEI) and the Institute of Acoustics (MIOA) and is the current SITRI Chairman.

2 Site Description

The site is located at Cromcastle Court, Kilmore, Dublin 5. The site is surrounded by residential developments in all directions with Kilbarron Road to the south and Kilmore Road to the east.



Figure 1: Site Location, noise sensitive locations, measurement locations A1-A5 and the surrounding area.

3 Project Criteria

The acoustic criterion for the project is set out in this section, the purpose of the criteria is to ensure reasonable:

- Internal noise levels,
- Noise levels in amenity spaces,
- Operational noise from the development and;
- Construction noise and vibration from the construction phase.

To provide adequate conditions Wave Dynamics have developed the project criteria for:

- Internal noise levels,
- External amenity noise levels,
- Construction noise and vibration,
- Operational noise.

Assessment Standards

The criteria for the project have been developed based on the following industry standards:

- ✓ BS 8233:2014 Guidance on sound insulation and noise reduction for buildings.
- ✓ BS4142 2014 A1+ 2019 Methods for rating and assessing industrial and commercial sound
- ✓ EPA NG4: Guidance Note for Noise: Licence Applications, Surveys and Assessments in Relation to Scheduled Activities (NG4)
- ✓ Dublin Agglomeration Environmental Noise Action Plan 2024 – 2028.
- ✓ ProPG Professional Practice Guidance on Planning & Noise.
- ✓ ISO 1996-1:2016 Acoustics — Description, measurement and assessment of environmental noise — Part 1: Basic quantities and assessment procedures
- ✓ British Standard BS 5228-1:2009+A1:2014 Code of practice for noise and vibration control on construction and open sites – Noise
- ✓ British Standard BS7385: 1993: Evaluation and measurement for vibration in buildings Part 2: Guide to damage levels from ground borne vibration.
- ✓ British Standard BS5228-2: 2009 + A1: 2014: Code of practice for noise and vibration control on construction and open sites – Vibration.
- ✓ British Standard BS 6472-1:2008 Guide to evaluation of human exposure to vibration in buildings.
- ✓ Previous experience on similar projects.

3.1 Inward Noise Impact Assessment Criteria

The internal ambient noise levels requirements have been developed from the following standards:

Dublin Agglomeration Noise Action Plan

The Dublin Agglomeration Noise Action Plan 2024 – 2028 states the following with respect to the prevention of excessive noise levels for proposed new developments:

“Applications for new residential developments in the Agglomeration will be assessed in accordance with the policies and goals outlined in the relevant City and County Development Plans. Where applicable, these include adoption of the principles of Professional Planning Guidance (ProPG) on Planning & Noise: New Residential Development, as described in Section 7.5.1.

Where the assessment outcome determines the likelihood of an adverse noise impact, planning applications should be supplemented by an Acoustic Design Statement carried out by appropriately qualified acousticians and competent persons.”

ProPG: Professional Practice Guidance on Planning & Noise

ProPg 2017 is used to assess airborne noise from transport sources including road, rail and aircraft noise. The aim of the document is to provide a good design process which considers the internal acoustic environment at an early stage in the design process. The guidance was prepared by the Institute of Acoustics, the Association of Noise Consultants and the Chartered Institute of Environmental Health and is based on the findings by the World Health Organisation in relation to noise impact on humans. Its adoption is considered best practice for assessing the potential noise impact on the future occupants for residential developments.

The guidance is primarily designed for residential developments however it can be applied to other development types including developments where people require appropriate noise levels for rest and sleep. This includes residential care homes, hospitals etc. The guidance advocates a holistic design process which considers the site, its location and likely suitability for the development at an early stage.

The two primary stages of the ProPG design approach are summarised as follows:

Stage 1 – The first stage is to undertake an initial high-level noise risk assessment of the proposed site considering the noise levels (measured and or predicted) to identify any noise risks. This would include consideration of the current noise environment, future use and future noise levels; and,

Stage 2 –The second stage is a full detailed assessment of the proposed development covering the “*Four Key Elements*”:

1. *“Good Acoustic Design Process,*
2. *Internal Noise Level Guidelines,*
3. *External Amenity Area Noise Assessment; and*
4. *Assessment of Other Relevant Issues.”*

As part of the process an Acoustic Design Statement is produced and submitted to the planning authority. This document sets out the design process used to come to the conclusions and recommendations in the report.

Following the ProPG the following conclusions are recommended by ProPG in relation to the findings of the Acoustic Design Statement based on the recommendations of the Acoustic Consultant:

- a. *“Planning consent may be granted without any need for noise conditions;”*
- b. *“Planning consent may be granted subject to the inclusion of suitable noise conditions; “*
- c. *“Planning consent should be refused on noise grounds in order to avoid significant adverse effects (“avoid”); or, “*
- d. *“Planning consent should be refused on noise grounds in order to prevent unacceptable adverse effects (“prevent”).”*

Section 3 of the ProPG outlines the recommended approach decision makers should following in coming to their conclusions based on the recommendations of the Acoustic Design Statement. Figure 1 on the next page illustrates the ProPG approach.

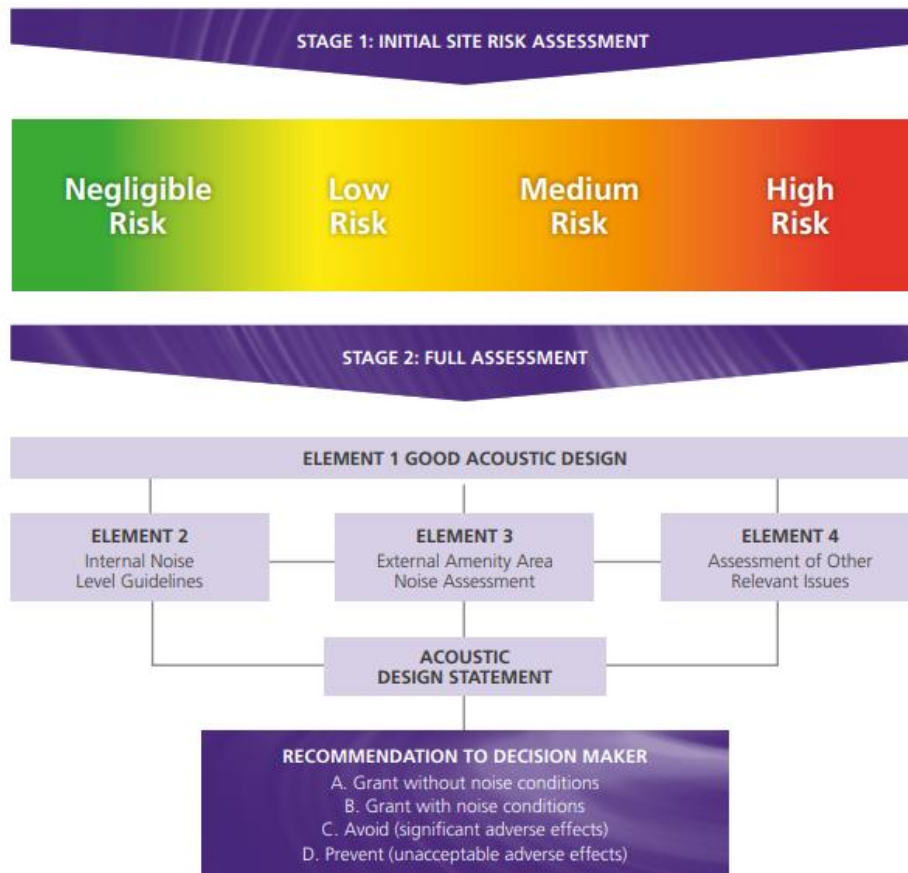


Figure 2: Summary of overall ProPG approach

Internal Noise Levels

Table 1 below outlines the recommended internal noise levels from BS 8233:2014 within living accommodation for residential buildings for dining, resting and sleeping. These limits are in line with the ProPG and the World Health Organisation Guidelines.

Table 1: BS 8233:2014 internal noise criteria –Residential Buildings.

Activity	Location	07:00 to 23:00 Hrs	23:00 to 07:00 Hrs
Resting	Living Room	35 dB L _{Aeq} , 16 hour	-
Dining	Dining Room/Area	35 dB L _{Aeq} , 16 hour	-
Sleeping (daytime resting)	Bedroom	35 dB L _{Aeq} , 16 hour	30 dB L _{Aeq} , 8 hour 45dB L _{AFmax} (See Note 1)

1: Regular individual noise events (for example, scheduled aircraft or passing trains) can cause sleep disturbance. A guideline value may be set in terms of SEL or L_{Amax,F}, depending on the character and number of events per night. Sporadic noise events could require separate values. In most circumstances in noise sensitive rooms at night (e.g. bedrooms) good acoustic design can be used so that individual noise events do not normally exceed 45dB L_{AFmax} more than 10 times a night.

External Amenity Space Noise Levels

With regard to noise levels in external amenity spaces ProPG 2017 refers to the BS8233:2014 guidance which states that:

“the acoustic environment of external amenity areas that are an intrinsic part of the overall design should always be assessed and noise levels should ideally not be above the range 50 – 55 dB $L_{Aeq,16hr}$ ”.

It also states that:

“These guideline values may not be achievable in all circumstances where development might be desirable. In such a situation, development should be designed to achieve the lowest practicable noise levels in these external amenity spaces but should not be prohibited.”

After mitigation/with mitigation if the adverse noise impacts are still above the recommended noise levels they can be offset by providing an alternative amenity space to partially offset the noise impact by providing access to:

- *“a relatively quiet facade (containing openable windows to habitable rooms) or a relatively quiet externally ventilated space (i.e. an enclosed balcony) as part of their dwelling; and/or*
- *a relatively quiet alternative or additional external amenity space for sole use by a household, (e.g. a garden, roof garden or*
- *a relatively quiet, protected, nearby, external amenity space for sole use by a limited group of residents as part of the amenity of their dwellings; and/or*
- *a relatively quiet, protected, publically accessible, external amenity space (e.g. a public park or a local green space designated because of its tranquillity) that is nearby (e.g. within a 5 minutes walking distance). The local planning authority could link such provision to the definition and management of Quiet Areas under the Environmental Noise Regulations.”*

BS 8233:2014 elaborates on this further, it acknowledges that it may not always be necessary or feasible to ensure that noise levels remain within the guideline values. In respect of gardens and patios, BS 8233:2014 states:

“however it is also recognized that these guideline values are not achievable in all circumstances where development might be desirable. In higher noise areas, such as city centres or urban areas adjoining the strategic transport network, a compromise between elevated noise levels and other factors, such as the convenience of living in these locations or making efficient use of land resources to ensure development needs can be met, might be warranted. In such a situation, development should be designed to achieve the lowest practicable levels in these external amenity spaces but should not be prohibited.”

Both BS8233:2014 and ProPG 2017 do not advise that development should be restricted in areas with undesirable noise levels. The standards recommend that mitigation measures are put in place where practicable to achieve the recommended noise levels for the external amenity spaces. It notes that this may not be practical in all situations and local or governmental policy should take precedence in these situations.

3.2 Construction Noise Assessment Criteria

There is currently no statutory Irish guidance for construction noise requirements from noise during the construction phase of a project.

In the absence of specific noise limits, the appropriate criteria for the allowable construction noise levels may be found in British Standard BS 5228-1:2009+A1:2014 Code of practice for noise and vibration control on construction and open sites – Noise.

The standard (BS5228-1:2009+A1) provides examples of acceptable limits for construction and/or demolition noise in both subjective and objective form. For example, paragraph E.2 of the standard states:

“Noise from construction and demolition sites should not exceed the level at which conversation in the nearest building would be difficult with the windows shut.”

Paragraph E.2 goes on to state:

“Noise levels, between say 07.00 and 19.00 hours, outside the nearest window of the occupied room closest to the site boundary should not exceed:

- 70 decibels (dBA) in rural, suburban areas away from main road traffic and industrial noise;
- 75 decibels (dBA) in urban areas near main roads in heavy industrial areas”.

Typically, the local councils refer to BS 5228 Part 1 as a method to control construction noise from sites on the local environment. This standard is therefore the de facto appropriate standard in the absence of regulatory guidance.

Based on paragraph E.2 of BS 5228 the following criteria is adopted for this project:

- For residential properties it is considered appropriate to adopt the 70dB(A) criterion for
- non-residential locations it is considered appropriate to adopt the higher category values of 75dB(A) during the day. These will only be assessed as noise sensitive during office hours.

For the purpose of this assessment buildings other than dwellings which have a residential function will be considered for the lower noise limit, this includes Hotels, B&B's, Student Accommodation, Co Living Developments etc. This is in line with the guidance and definition of noise sensitive residences of EPA NG4. Table 2 below outlines the project criteria in tabular form.

Table 2: BS 8233:2014 threshold levels.

Assessment category and threshold value period	Threshold value, in decibels (dB) (L _{Aeq})		
	Category A ¹	Category B ²	Category C ³
Daytime (07:00 – 19:00) and Saturdays (07:00 – 14:00)	65	70	75
Evenings and weekends ⁴	55	60	65
Night-time (23:00 to 07:00hrs)	45	50	55

- 1) Category A: threshold values to use when ambient noise levels (when rounded to the nearest 5dB) are less than these values.
- 2) Category B: threshold values to use when ambient noise levels (when rounded to the nearest 5dB) are the same as category A values.
- 3) Category C: threshold values to use when ambient noise levels (when rounded to the nearest 5dB) are higher than category B values.
- 4) 19:00 – 23:00 weekdays, 13:00 – 23:00 Saturdays and 07:00 – 23:00 Sundays.

3.3 Construction Vibration Criteria

Best practice guidance is taken from British Standard BS 5228:2009 + A1 2014 Code of Practice for Noise and Vibration Control on Construction and Open Sites - Part 2 Vibration.

The standard recommends that for a soundly constructed residential property and similar structures (in good repair), the threshold for minor or cosmetic (i.e. non- structural) damage should be taken as a Peak Particle Velocity (PPV) (in frequency range of predominant pulse) of 15mm/s at 4Hz increasing to 20mm/s at 15Hz and 50mm/s at 40Hz and above. Allowable vibration (in terms of peak particle velocity) at the closest part of sensitive property to the source of vibration, at a frequency of:

Table 3: Likely Construction Noise Impact

Allowable vibration (in terms of peak particle velocity) at the closest part of sensitive property to the source of vibration, at a frequency of:			
Building Type	Less than 15Hz	15 to 40Hz	40Hz and above
Light framed structures/ residential buildings	15 mm/s	20 mm/s	50 mm/s

3.4 Operational Noise Criteria

Local authorities can set noise limits from typical residential developments pertaining to noise however there is currently no national policy for operational noise limits from residential developments for planning noise assessments. Noise limits for new developments are typically sought from local council's noise action plan, EPA NG4 or BS4142. On review of the Dublin Agglomeration Noise Action Plan no specific guidance has been outlined for noise limits from commercial premises and therefore the criteria from EPA NG4 and BS4142 has been adopted for the project.

BS 4142:2014+A1:2019

The standard describes a method for the assessment of commercial, industrial and background noise to quantify its impact on persons outside of a residential dwelling. BS 4142 has become the de facto standard for compliance investigation. In addition to the specified broadband noise levels the standards provide objective and subjective methods for the assessment of the impulsivity and tonality of the noise sources. This allows for a penalty/ correction to be applied to the measured noise level of the source (L_{Aeq}) to give the rating level ($L_{Ar,T}$).

It considers the likelihood of complaints by considering the margin by which the noise in source the background noise level.

BS 4142 states that and exceedance of the noise source of the background noise by:

- +10 dB or more indicates that complaints are likely,
- + 5 dB is of marginal significance, and;
- The rating level is more than 10 dB below the measured background noise level, then this is a positive indication that complaints are unlikely.

BS4142 outlines guidance for penalty corrections to be applied to the noise sources in question should the noise source have one of the following characteristics:

- The noise contains a distinguishable, discreet, continuous tone (whine, or hum);
- The noise contains distinct impulses (i.e. bangs),
- The noise is intermittent or:
- The noise is irregular.

EPA NG4

EPA NG4 outlines that noise attributable solely to onsite activities from a licenced premises should not exceed the following limits:

- Daytime (07:00hrs – 19:00hrs) – 55dB $L_{Ar,T}$
- Evening (19:00hrs – 23:00hrs) – 50dB $L_{Ar,T}$
- Night time (23:00hrs – 07:00hrs) – 45dB $L_{Aeq,T}$

During daytime and evening periods rigorous efforts should be made to avoid clearly audible tones and impulsive noise at all sensitive locations. A penalty of 5dB for tonal and/or impulsive elements is to be applied to the daytime and evening measured $L_{Aeq,T}$ values to determine the appropriate rating level ($L_{Ar,T}$). In all cases, an assessment by a competent person will be required.

During the night-time period no tonal or impulsive noise from the facility should be clearly audible or measurable at any NSL.

4 ProPG Stage 1 – Assessment

The stage one risk assessment is used to assess the site for potential risks that may occur in terms of noise impact. The ProPG sets out four categories of risk: 1) negligible, 2) low, 3) medium or 4) high risk. Figure 2 below illustrates the ProPG risk assessment and the values associated with each risk category.

The risk assessment also considers the risk based on the number of L_{AFmax} events per night as follows;

- A site should not be considered a negligible risk if more than 10 L_{AFmax} events exceed 60 dB during the night period and;
- A site should be considered a high risk if the L_{AFmax} events exceed 80 dB more than 20 times per night.

Paragraph 2.9 of ProPG states that,

“The noise risk assessment may be based on measurements or prediction (or a combination of both) as appropriate and should aim to describe noise levels over a “typical worst case” 24 hour day either now or in the foreseeable future.”

To assess the noise impact with the ProPG risk categories a baseline noise survey was undertaken on the site to quantify the existing noise environment.

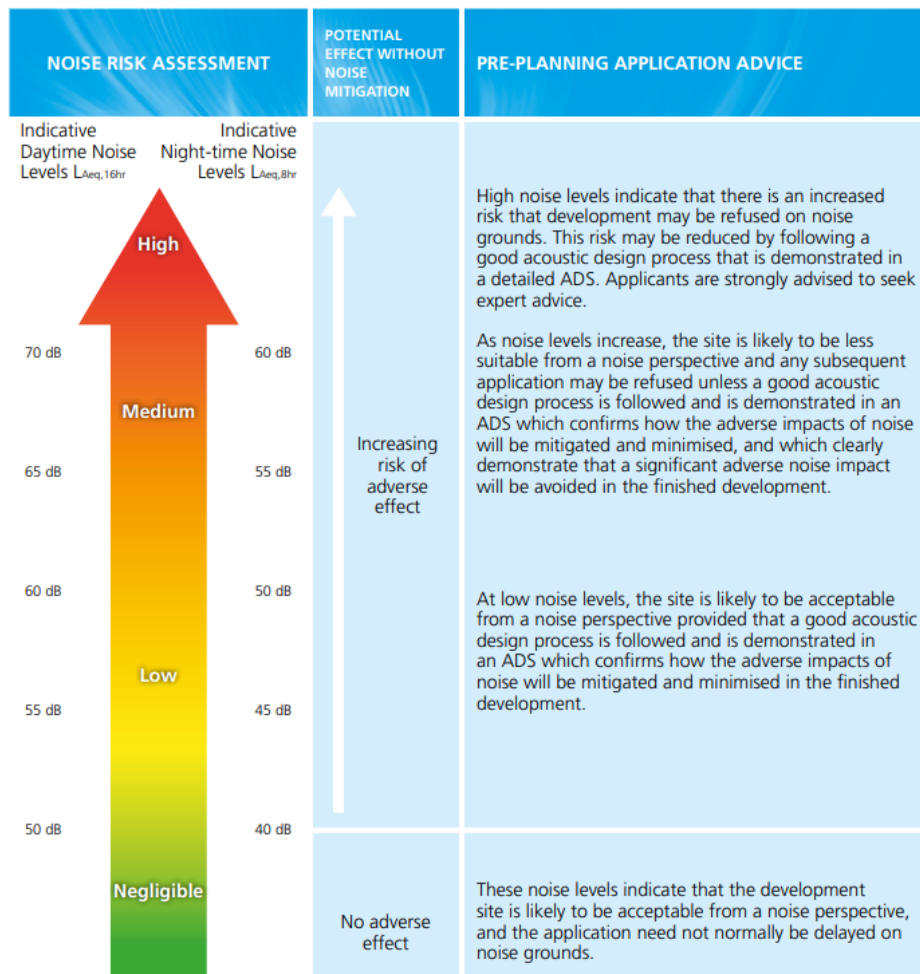


Figure 3: ProPG Risk Analysis

4.1 Baseline Noise Survey

An attended noise survey was conducted to quantify the existing noise environment. The survey included measurements across the site. The purpose of the measurements was to quantify the existing noise environment to assess the break in noise on the future development.

4.1.1 Site Description and Measurement Locations

The site is located at Cromcastle Court, Kilmore, Dublin 5. The site is surrounded by residential developments in all directions with Kilbarron Road to the south and Kilmore Road to the east.



Figure 4: Site Location, noise sensitive locations, measurement locations A1-A5 and the surrounding area.

4.1.2 Survey Methodology and Personnel

The attended noise survey was completed by Daniel Cousins (Field Engineer) and Ryan Cox (Technical Engineer) on the 29th of November 2024 from 05:00hrs to 12:00hrs.

Attended Noise Measurements

Noise measurements were undertaken in general accordance with ISO 1996-1:2016 using ISO Class 1 sound analysers. Attended measurements were taken for a duration of 15 - 60 minute periods in various locations as noted in Figure 4. Care was taken to avoid any effect on the measurement of extraneous noise, acoustic vibration, or interference. During the attended noise measurements, the sound level meter was positioned at approximately 1.5m above the ground level. The weather conditions were calm (wind less than 5m/s) with no rain, a wind shield was used for the duration of the attended surveys. The noise logger was calibrated before and after the survey and no significant drift was noted.

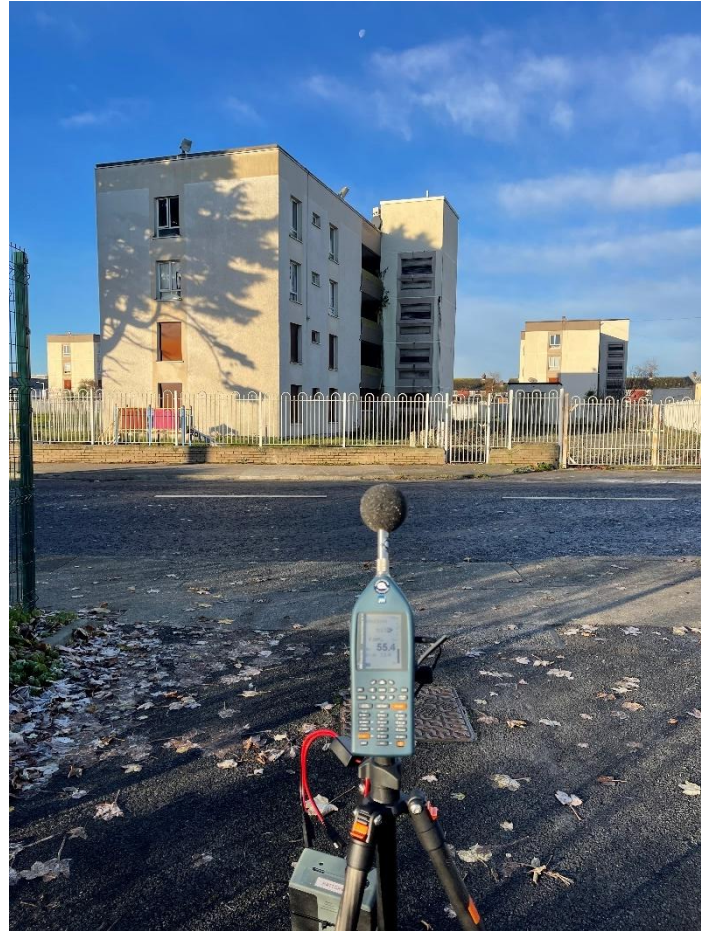


Figure 5: Attended Measurement Setup.

4.1.3 Noise Measurement Equipment

A Class 1 sound level meter/noise logger in general accordance with IEC 61672-1:2013 was used for the attended measurements. Table 4 below summarises the measurement equipment used.

Table 4: Noise Measurement Equipment

Description	WD Asset Number	Model	Serial No.	Calibration Certificate No.	Calibration Due Date
Sound Level Meter	SLM2	NOR140	1406532	SLM230218	27/09/2025
Sound Level Meter	SLM3	Nor 140	1403082	SLM230219	15/11/2026
Calibrator	CAL3	Nor 1251	32096	AC240251	03/07/2025

4.1.4 Subjective Noise Environment

During the attended noise survey and logger deployment, the following noise sources were identified:

- Road traffic noise from Kilmore Road and Kilbarron Road,
- Overhead aircraft,
- Pedestrian noise and birdsong.

No immediate vibration sources were identified on the surface of the development. Any potential underground noise sources should be identified to WDA where applicable.

4.2 Noise Measurement Results

Attended measurements were taken to measure the noise levels across the site. This section outlines the results of the attended noise measurements.

Attended Measurement Results

Table 5 outlines the results of the attended measurement survey.

Table 5: Attended Noise Measurement Results

Measurement				Measured Noise Levels		
Location	Date	Time (hrs)	Duration (mins)	L _{Aeq} dB	L _{AFmax} dB	L _{A90} dB
A2	20/11/2024	05:21	15:00	67	85	49
A1	20/11/2024	05:29	15:00	57	78	48
A3	20/11/2024	05:39	15:00	61	74	51
A4	20/11/2024	05:54	15:00	53	60	51
A1	20/11/2024	06:01	15:00	61	82	51
A2	20/11/2024	06:12	15:00	70	82	57
A3	20/11/2024	06:22	15:00	63	74	55
A1	20/11/2024	06:31	15:00	64	80	53
A2	20/11/2024	06:40	15:00	71	84	58
A3	20/11/2024	06:49	15:00	68	81	57
A2	20/11/2024	08:00	15:00	72	84	62
A1	20/11/2024	08:01	15:00	69	84	56
A3	20/11/2024	08:18	15:00	67	76	58
A2	20/11/2024	08:21	15:00	72	83	62
A3	20/11/2024	08:42	15:00	67	77	58
A1	20/11/2024	08:45	15:00	69	80	57
A2	20/11/2024	09:03	15:00	73	83	62
A1	20/11/2024	09:07	15:00	68	81	55
A3	20/11/2024	09:33	15:00	68	80	59
A5	20/11/2024	09:35	60:00	57	70	55
A4	20/11/2024	09:58	60:00	54	71	51
A5	20/11/2024	10:40	15:00	58	67	55

Aircraft Sound Exposure Measurement Results

Table 6 outlines the results of the attended measurements for aircraft flyover noise levels at location A1. The flyover sound exposure levels have been calculated from the measured L_{Aeq} levels.

The sound exposure level (SEL) from aircraft flyovers has been calculated using the following equation:

$$L_{Ax} = L_{Aeq} - 10 \cdot \log_{10}(N) + 10 \cdot \log_{10}(T)$$

Where:

L_{Ax} measured SEL

N number of vehicle movements

T time (seconds)

Table 6: Aircraft Flyover Noise Levels

Measurement				Aircraft Type	Measured Noise Levels		Sound Exposure Level
Location	Date	Time (hrs)	Duration (s)		L _{Aeq} dB	L _{AFmax} dB	L _{Ax} dB
A4	20/11/2024	11:18	00:17	Boeing 737-8AS	53	55	65
A4	20/11/2024	11:21	01:06	Airbus A321-253NX	53	62	71
A4	20/11/2024	11:24	01:07	Airbus A320-214	52	56	70
A4	20/11/2024	11:28	00:46	Airbus A320	51	53	68
A4	20/11/2024	11:31	01:10	Airbus A330-302	54	58	73
A4	20/11/2024	11:34	01:10	Boeing 737-8AS	52	56	71
A4	20/11/2024	11:36	00:45	ATR 72-600	52	58	69
A4	20/11/2024	11:38	00:34	Airbus A320	54	57	69
A4	20/11/2024	11:44	00:49	Boeing 767-332	58	64	75

Discussion of Measurement Results

The measurements were taken on a weekday to establish the existing noise climate. It can be seen from the measurements that the measured noise levels are steady across the entirety of the survey. The dominating noise source in the area is road traffic noise from the surrounding roads. Attended measurements during both the daytime and nighttime and periods were taken to measure the noise levels on the site. It was not possible to put a logger out due to the availability of a secure location to place the logger.

4.3 Weather Conditions for Monitoring Period

Good weather conditions were noted in general during the deployment and collection during the attended survey, with winds of less than 5 m/s and no rain for the attended surveys.

4.4 Future Noise Levels

Road Traffic Noise

Based on data from the TII (2017) the average rate of growth on Irish roads is 3.9%. Assuming linear growth of 3.9% over the next 10 years an increase in noise levels from road traffic of 2dB would be expected. WDA have allowed for this growth in our assessment.

4.5 ProPG Stage 1 – Initial Risk Assessment

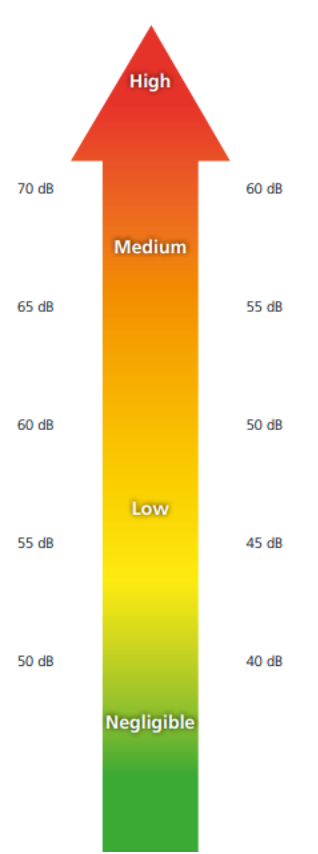
The measured noise levels on the site and future noise levels have been predicted for road traffic noise to assess the probability of an adverse impact.

Table 7 below identifies the Noise Risk Categorisation of the site based on the predicted free field façade noise levels. The site has been categorised as medium to high risk at the southern elevations of Blocks B and C, along with the southern and easter elevations of Block A and G, and medium to low risk across the remainder of the site in accordance with the ProPg risk assessment. Considering this risk categorisation of the development mitigation measures will be required to mitigate the noise risk in following with ProPG guidance and good acoustic design process.

It should be noted that the ProPG 2017 states the following with regard to how the initial site noise risk is to be used:

“2.12 It is important that the assessment of noise risk at a proposed residential development site is not the basis for the eventual recommendation to the decision maker. The recommended approach is intended to give the developer, the noise practitioner, and the decision maker an early indication of the likely initial suitability of the site for new residential development from a noise perspective and the extent of the acoustic issues that would be faced. Thus, a site considered to be high risk will be recognised as presenting more acoustic challenges than a site considered as low risk. A site considered as negligible risk is likely to be acceptable from a noise perspective and need not normally be delayed on noise grounds. A potentially problematical site will be flagged at the earliest possible stage, with an increasing risk indicating the increasing importance of good acoustic design.”

Table 7: ProPG Stage 1 Risk Assessment of Existing Noise Levels

Noise Risk Assessment		Risk Assessment Rating	
Indicative Daytime Noise Levels $L_{Aeq,16hour}$	Indicative Night-time Noise Levels $L_{Aeq,8hour}$	Daytime Noise Levels	Night-time Noise Levels
 <p>70 dB 60 dB High</p> <p>65 dB 55 dB Medium</p> <p>60 dB 50 dB Low</p> <p>55 dB 45 dB Low</p> <p>50 dB 40 dB Negligible</p>		High Risk	High Risk
		N/A	The southern elevations of Blocks B and C, along with the southern and easter elevations of Block A and G occupy the high risk contour for night-time noise levels. Good acoustic design should be observed.
		Medium Risk	Medium Risk
		The southern elevations of Blocks B and C, along with the southern and easter elevations of Block A and G occupy the medium risk contour for daytime noise levels. Good acoustic design should be observed.	The remainder of the site occupies the medium risk contour for night-time noise. Good acoustic design should be observed.
		Low Risk	Low Risk
		The remainder of the site occupies the low risk contour for daytime noise.	N/A
		Negligible Risk	Negligible Risk
	N/A	N/A	

5 ProPG Stage 2- Full Assessment

This section outlines the full acoustic design assessment in line with ProPG guidance.

5.1.1 Element 1: Good Acoustic Design Process

ProPg States the following in relation to Good Acoustic Design Process:

“A good acoustic design process takes a multi-faceted and integrated approach to achieve optimal acoustic conditions, both internally (inside noise-sensitive parts of the building(s)) and externally (in spaces to be used for amenity purposes).”

“Good acoustic design should avoid “unreasonable” acoustic conditions and prevent “unacceptable” acoustic conditions (these terms are defined in Element 2). Good acoustic design does not mean overdesign or gold plating of all new development but seeking to deliver the optimum acoustic outcome for a particular site”

The following considerations are recommended by ProPG:

- *“Check the feasibility of relocating, or reducing noise levels from relevant sources.*
- *Consider options for planning the site or building layout.*
- *Consider the orientation of proposed building(s).*
- *Select construction types and methods for meeting building performance requirements.*
- *Examine the effects of noise control measures on ventilation, fire regulation, health and safety, cost, CDM (construction, design and management) etc.*
- *Assess the viability of alternative solutions.*
- *Assess external amenity area noise.”*

5.1.2 Discussion of Good Acoustic Design

Mitigation of Sources

The development is located close to the road noise sources which are not on or part of the development therefore it is not possible to reduce or relocate the relevant noise sources.

Site Layout and Orientation

The southern and eastern boundary of the site is the most exposed to road traffic noise from Kilbarron Road and Kilmore Road. The orientation of the apartment blocks benefits the external amenity spaces greatly, as the internal courtyard is screened from road traffic noise.

Construction Methods

Section 5.2.3 considers the construction methods required to meet the building performance control measures. The construction measures are in general robust, providing standard external wall and façade details to meet thermal, fire and weathertightness requirements will in general provide adequate performance to achieve good levels of sound insulation.

Impact of Noise Control Measures

The effects for noise control measures on other building elements including ventilation are considered in Section 5.2.3. It is generally impractical to provide ventilation via openable windows in urban/built up areas. An open window will provide 10-15dB of attenuation which in built-up urban areas is not practical. In general, the good acoustic design process in these areas is to provide ventilation via attenuated natural vents or mechanical ventilation. This allows the occupants to have adequate ventilation with adequate noise levels.

External Amenity

ProPG states the following with regard to external amenity spaces:

“The acoustic environment of external amenity areas that are an intrinsic part of the overall design should always be assessed and noise levels should ideally not be above the range 50 – 55 dB LAeq,16hr.”

The external amenity source noise levels are considered in section 5.3.

5.2 Element 2 – Assessment of Internal Noise Levels

This section outlines the assessment of the building envelope including the façade noise modelling, and specification of the glazing requirements.

A noise intrusion assessment for the proposed development has been completed in accordance with the methodology outlined International Standard *ISO EN 12354-3:2017 Building acoustics — Estimation of acoustic performance of buildings from the performance of elements — Part 3: Airborne sound insulation against outdoor sound*. The standard provides a method for calculating the indoor noise levels due to for instance road and rail traffic noise.

The calculation method accounts for multiple factors including:

- The external noise level at the affected building façade.
- The frequency characteristics of the specific noise source (i.e. road and railway noise).
- The sound insulation performance of each façade element (i.e. windows, walls, roof...).
- The area of each façade element.
- Direct and flanking transmission paths.

5.2.1 Noise Prediction Modelling

Following the survey, a computational noise model of the development using SoundPLAN 9.0 modelling software was developed to establish the noise levels from the development in a worst-case scenario. The software implements the algorithms contained in ISO 9613-1 and ISO 9613-2. The noise model considers:

- Distance attenuation,
- Source and receptor locations,
- Barrier effects (buildings, walls etc)
- Topographical elevations,
- Ground effects and absorption,
- Source sound power levels,
- Directivity and orientation of the source,
- Atmospheric attenuation and meteorological effects,

The noise model has been calibrated against the attended noise measurements. SoundPLAN 9.0 software predicts road traffic noise levels in accordance with *Calculation of Road Traffic Noise* (UK Department for Transport, 1998). This is the recognised appropriate standard for road traffic noise prediction as per TII (Transport Infrastructure Ireland).

The following information was input into the model:

- Development layout provided by architect's drawings.
- Google Maps terrain and elevation data of surrounding area.
- Road traffic noise levels calibrated based on attended measurement survey onsite.
- Annual traffic growth rate of 3.9%.
 - This has been assessed based on pre-covid traffic growth data.

5.2.2 Predicted Road Noise Levels

Incident road traffic noise levels have been predicted across all facades of the development for both the day and nighttime period.

Daytime Noise Levels

Figure 6, Figure 7 and Figure 8 outline the predicted road traffic noise levels across the proposed site for the day time period at 1.5m, 4m and 6.5m height respectively.



Figure 6: Predicted $L_{Aeq,16hour}$ (07:00Hrs – 23:00Hrs) at 1.5m height for the future development.



Figure 7: Predicted $L_{Aeq,16hour}$ (07:00Hrs – 23:00Hrs) at 4m height for the future development.



Figure 8: Predicted $L_{Aeq,16hour}$ (07:00Hrs – 23:00Hrs) at 6.5m height for the future development.

Nighttime Noise Levels

Figure 9, Figure 10 and Figure 11 below outline the predicted road traffic noise levels across the proposed site for the nighttime period at 1.5m, 4m and 6.5m height respectively.

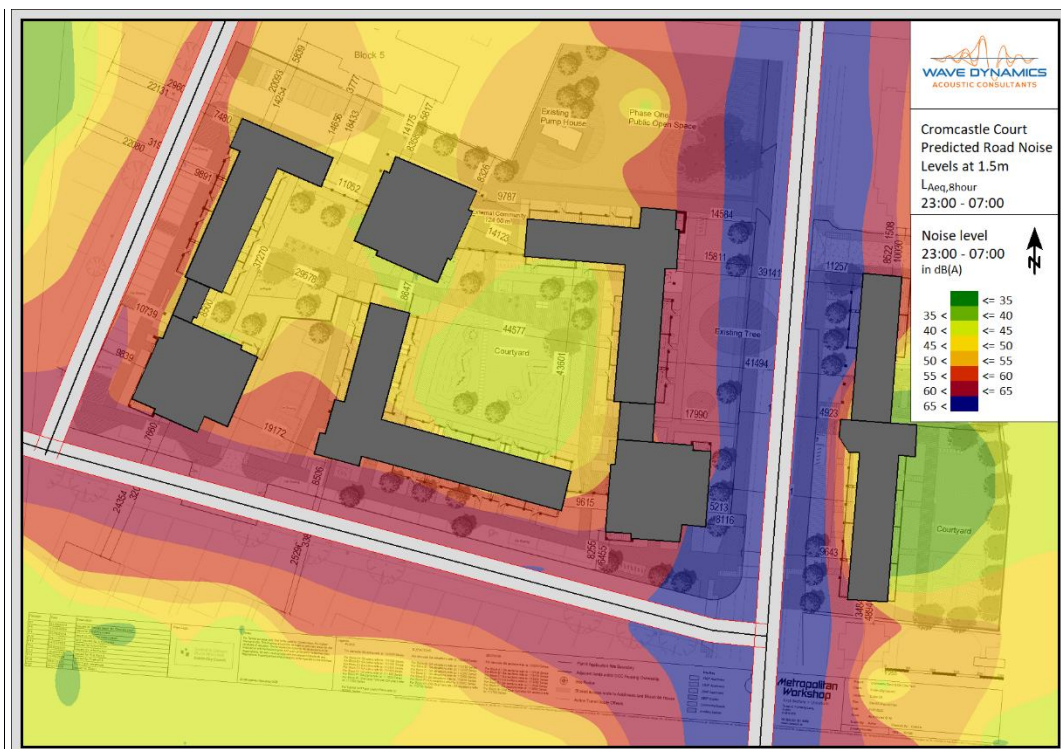


Figure 9: Predicted $L_{Aeq,8hour}$ (23:00Hrs – 07:00Hrs) at 1.5m height for the future development.

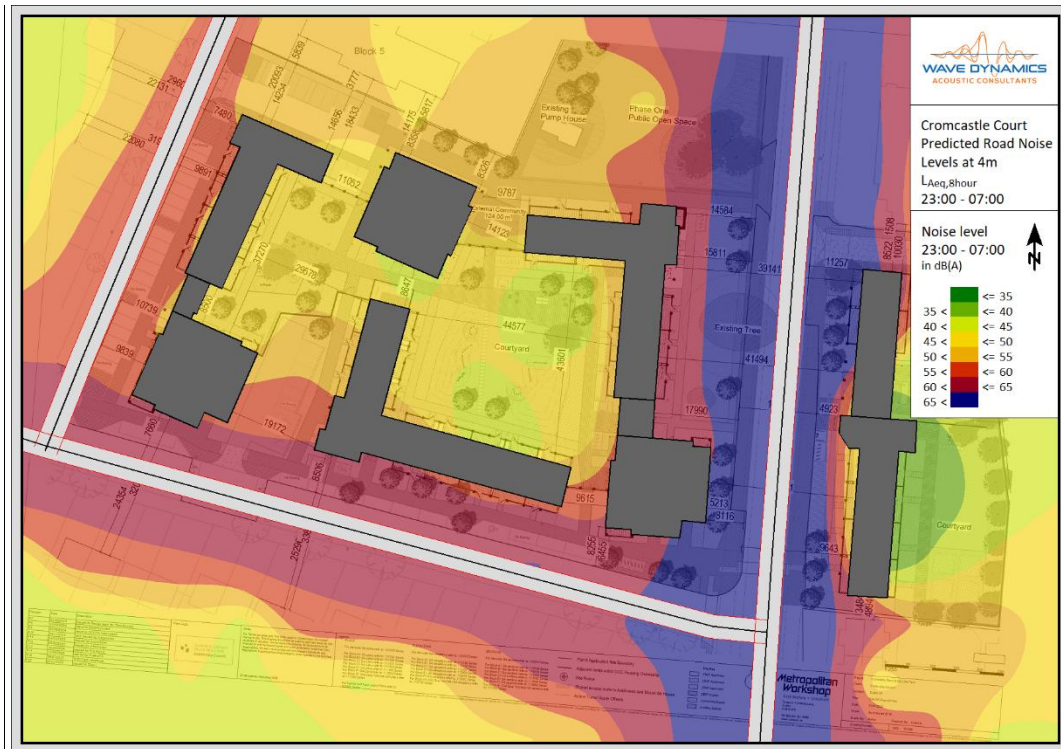


Figure 10: Predicted $L_{Aeq,8hour}$ (23:00Hrs – 07:00Hrs) at 4m height for the future development.

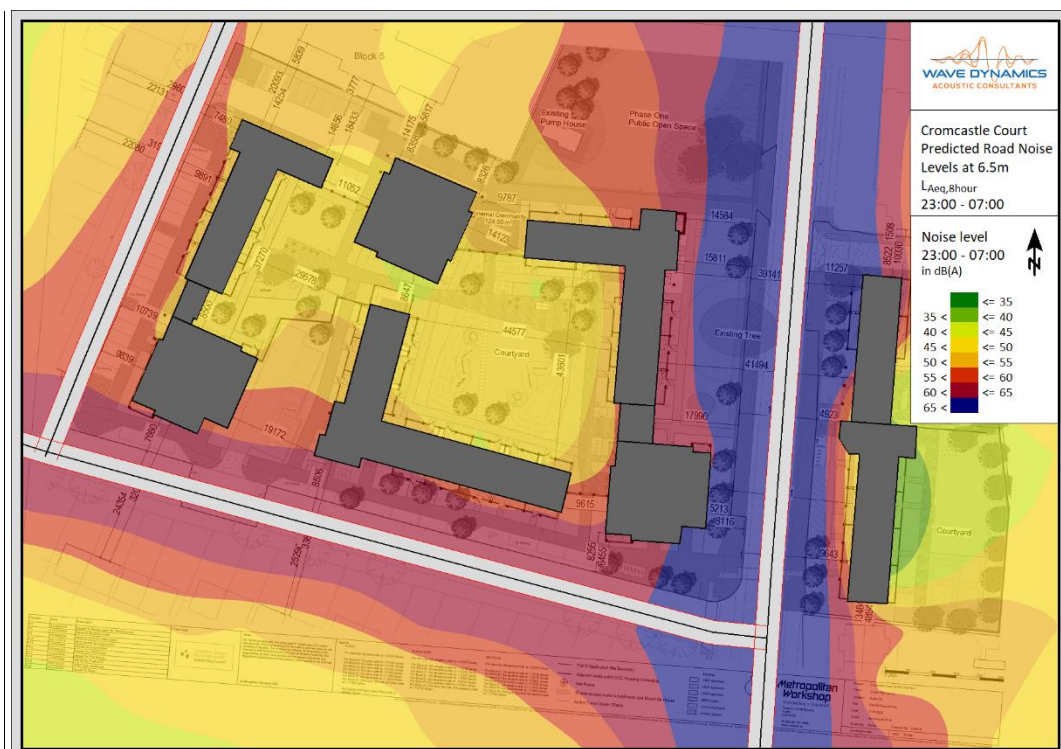


Figure 11: Predicted $L_{Aeq,8hour}$ (23:00Hrs – 07:00Hrs) at 6.5m height for the future development.

5.2.3 Building Envelope Specification

This section outlines the building envelope requirements based on the measurements outlined in Section 3. Façade, wall, glazing, roof and ventilation specifications have been determined to achieve the internal noise level criteria for the development. The specification has been determined in accordance with EN ISO 12354-3: 2017 based on the predicted façade day and night noise levels, the room and facade dimensions from the drawings provided.

The building envelope specification should be confirmed by the acoustic consultant at design stage once the internal layouts and building envelope design development has been completed. Any changes to the assumed ventilation strategy and glazing requirement should be considered as part of the review and it should be based on the internal noise levels cited in this report.

Glazed Elements and Ventilation

The glazed elements and ventilation openings are typically the acoustically weakest elements of any façade. The required sound insulation performance of façade glazed elements and ventilation openings is outlined in Table 8 below.

It is required that the glazing, frame and seals as a whole achieve the performance when the window is in the closed position. The performance requirements outlined in Table 8 below are considered to provide adequate sound insulation to achieve the relevant day and night internal design goals respectively. A markup outlining the performance requirements for each façade are included in Appendix B.

Table 8: Sound Insulation performance requirements for glazed elements and ventilation.

Façade	Glazed Elements (Frame & Glazing) Sound Insulation Requirements (Indicative requirements equal or approved)							Façade Ventilation Requirement ²
	Octave Band Frequency Requirements ¹ R dB						Glazing Acoustic Performance dB R _w	
	125 Hz	250 Hz	500 Hz	1000 Hz	2000 Hz	4000 Hz		
RED	28	28	29	35	38	34	35dB R _w	Mechanical Ventilation
GREEN	Standard Double Glazing ³							Mechanical Ventilation

(1) Assessment based on mechanical ventilation, the performance cited for a fully sealed system. Should this change to natural ventilation the above specification may be increased. An acoustic consultant should be engaged to assess the level of increase appropriate to maintain the internal noise level criteria.

(2) Standard double glazing assumes a construction of two panes of 3mm glass with a 10mm cavity achieving a minimum 29dB R_w, equal or approved.

It is important to note that the requirements outlined above are minimum requirements for the glazed element as a whole. The octave band values are indicative and specific to the assessed glazing type, equal or approved to meet the minimum project requirements is acceptable.

The assessment has been based on a mechanically ventilated system. Should the ventilation strategy change to a natural ventilation strategy an Acoustic Consultant should be engaged to provide an appropriate natural ventilation sound insulation performance requirement for glazed elements and ventilators. Typically, the use of a natural ventilation strategy will lead to an increased glazing specification compared to a mechanically ventilated system. This assessment is based on the windows in closed position.

It is recommended that the facade supplier provide laboratory tests confirming the airborne sound insulation performance in the absence of suitable laboratory data a composite sound reduction index calculation undertaken by a suitably qualified acoustic consultant can be used to demonstrate compliance.

External Wall Construction

The façade wall construction has been assumed to achieve a minimum sound insulation performance of 56dB R_w. Typical façade construction such as concrete, blockwork, timber frame and brick offer high levels of sound insulation and will meet this requirement.

Roof Construction

The roof construction has been assumed to achieve a minimum sound insulation performance of 50dB R_w. Any skylights and glazing in the roof system to corridor or communal areas should be of standard double-glazed construction to meet a performance of minimum 29 dB R_w. If there are any skylights to habitable bedrooms Wave Dynamics should be informed to provide specific guidance in each case.

Consideration of Openable Windows

From a review of predicted noise contours across the site there are a number of facades which benefit from screening from the building layouts. The areas facing into the centre of the development are provided with natural shading from the proposed buildings themselves. In some locations the screening provided by the proposed buildings is adequate to allow for consideration of openable windows to provide ventilation during the daytime period.

Figure 12 and below shows the facades of the development which have low enough onset noise levels to achieve the internal noise levels with windows in the half-open or tilted position in the daytime period.



Figure 12: Locations of façades suitable for ventilation via openable windows during the daytime period.

5.3 Element 3- External Amenity Spaces

The external amenity spaces on the development include external amenity in the form of balconies and communal amenity space at ground level in the form of an internal courtyard to the rear of block G and a central courtyard for the remaining blocks. Based on the assessment, the balconies on the internal façades of blocks B, C, D, E, G, and the northern internal elevation of block F, along with the communal amenity spaces are predicted to comply with the recommended external amenity noise criteria as outlined in ProPG and BS8233 as they benefit from screening of the proposed buildings.

Based on the measured noise levels at the site it is predicted that the external noise levels in the ground level communal amenity spaces and all balconies of the apartments on elevations facing into the courtyard areas will achieve the ProPG recommendations for desirable external amenity noise levels of 50-55dBA LAeq,16hour.

Figure 13 below highlight the proposed external amenity spaces.



Figure 13: Communal Amenity Space at Ground Floor Level.

5.4 Element 4- Assessment of Other Relevant Issues

This section of the acoustic design report considered the other relevant issues. Element 4 considers other issues which may remain relevant to the assessment, these issues are as follows:

- 4(i) compliance with relevant national and local policy.
- 4(ii) magnitude and extent of compliance with ProPG .
- 4(iii) likely occupants of the development.
- 4(iv) acoustic design v unintended adverse consequences and;
- 4(v) acoustic design v wider planning objectives.

5.4.1 Compliance with Relevant National and Local Policy

There are no specific noise guidance or policy documents for residential developments. The Dublin Agglomeration Noise Action Plan refers to the ProPG as the relevant document for assessment of the noise impact on new residential developments as followed in this acoustic design statement.

5.4.2 Magnitude and Extent of Compliance with ProPG

This report demonstrates that all dwellings will meet the specified internal noise level requirements provided the guidance in this report is followed. External amenity spaces have been provided in line with the guidance set out in ProPG. Based on this the development is in general compliance with the ProPG requirements.

5.4.3 Likely Occupants of The Development

Additional needs of the future occupants are not known at this stage however the needs of all potential occupants have been considered with the assessment of adequate internal noise levels and provision of adequate external amenity spaces to meet the needs of potential occupants.

5.4.4 Acoustic Design v Unintended Adverse Consequences

The design has considered the impact of adverse consequences, mitigation has been provided by specification of the sound insulation and ventilation requirements.

5.4.5 Acoustic Design v Wider Planning Objective

Where possible the wider planning objectives have been considered including the need for residential housing with good transport links. It is assumed that the wider planning objectives have been adhered to by following the ProPG guidance.

5.5 Stage 2 Assessment Conclusion

The stage 2 assessment considers all four (4) elements, the principals of good acoustic design have been followed.

The element 2 assessment has considered the measures required to provide an adequate acoustic environment with appropriate noise levels for internal spaces. The sound insulation and ventilation requirements have been specified based on the predicted façade noise levels.

The element 3 assessment of external amenity spaces has considered the noise impact on the development and the external amenity spaces. The appropriate provision of external amenity space has been provided through the use of balconies and the ground level communal amenity space in line with the ProPG guidance.

Other relevant issues have been considered including, local policy, unintended consequences and the wider planning objectives.

6 Construction Noise Assessment

6.1 Noise Sensitive Locations and Noise Limits

Based on the location of the site, the construction works and its proximity to the residential receptors the following noise sensitive receptors have been identified:



Figure 14: Site location and noise sensitive locations 1-5.

Noise Limits

The criteria for the project based on the criteria outlined in section 3 and the background noise in the area the project criteria for construction noise is outlined below in Table 9. Reference to the baseline survey results and guidance contained in BS 5228 Part 1 for construction noise levels threshold for significance affect from construction activities is set as follows for the closest noise sensitive locations:

Table 9: Project Criteria

Construction Noise Limits			
Noise Sensitive Location	Distance To the Centre of The Site	Ambient Noise dB(A)	Noise Limit dB(A) ¹
NSL1	115	54	65
NSL2	75	54	65
NSL3	50	67	70

Construction Noise Limits			
Noise Sensitive Location	Distance To the Centre of The Site	Ambient Noise dB(A)	Noise Limit dB(A) ¹
NSL4	40	58	65
NSL5	55	68	70

(1) 65 dB (A) lower threshold limit.

For the appropriate assessment period (i.e. daytime in this instance) the ambient noise level is determined and rounded to the nearest 5dB. If the noise generated by construction activities exceeds the appropriate category value, then a significant effect is deemed to occur.

6.2 Construction Noise Predictions

Construction noise for the site has been predicted based on the information provided by Dublin City Council. A summary of the expected equipment, durations and operating times are provided in Table 10. The noise sources are assumed to be located at the centre of the development site. The prediction methodology in BS5228 has been used to calculate the noise level over a typical day for each of the main construction stages.

The closest noise sensitive locations have been identified as the surrounding residential dwellings to the north, south, east and west.

Table 10: Proposed construction equipment, noise levels and duration.

Construction Phase	Item of Plant (BS 5228-1:2009+A1:2014 Ref)	Noise Level (L _{Aeq} at 10m dB(A))	On Time of 10 hr day
Site Setup	Digger	77	4 hours
	Carpentry tools	78	3 hours
	Skill saw	84	2 hours
Demolition	Excavators	77	3 hours
	Concrete breaker	92	2 hours
	Pulveriser mounted on excavator	80	2 hours
	Hand held pneumatic breaker	83	2 hours
	Dumper	81	3 hours
	Lorry idling	80	2 hours
	Telescopic handler	71	4 hours

Construction Phase	Item of Plant (BS 5228-1:2009+A1:2014 Ref)	Noise Level (L _{Aeq} at 10m dB(A))	On Time of 10 hr day
Substructure	Excavators	77	2 Hours
	Con saws	84	3 Hours
	Rail saw	85	2 Hours
	Drills	89	2 Hours
	Dumper 7t	81	2 Hours
	Cement Mixer	75	4 Hours
	Telescopic Handler	71	4 Hours
	Concrete Pump	78	3 Hours
Superstructure	Drills	89	2 Hours
	Power Tools	70	3 Hours
	Impact Steel	69	2 Hours
	Hammer	69	1 Hour
	Dumper 7t	81	3 Hours
	Cement Mixer	75	2 Hours
	Telescopic Handler	71	5 Hours
External finishes	Hand Tools	70	5 hours
	Power Tools	70	2 hours
Internal finishes	n/a	n/a	n/a

Table 11 summarises the predicted construction noise level at the noise sensitive locations. Examination of the results indicate the construction noise without mitigation is predicted to exceed the noise limits during all stages of the development.

Table 11: Predicted noise levels **without** mitigation for each stage.

Location	Noise Limit	Predicted noise level (construction noise + ambient) with no mitigation L _{Aeq} , dB				
		Site Set Up	Demolition	Substructure	Superstructure	External Finishes
NSL1	65	69	76	77	75	59
NSL2	65	71	78	79	77	61
NSL3	70	73	80	81	79	68
NSL4	65	74	81	82	79	64
NSL5	70	74	79	80	78	63

The calculations set out above are based on assumed site construction works and a combination of the plant operating at the same time i.e. worst-case scenario.

Table 12: Attenuation required based on the construction noise predictions.

Location	Noise Limit	Noise reduction required at each stage of works to meet criteria (dBA)				
		Site Set Up	Demolition	Substructure	Superstructure	External finishes
NSL1	65	4	11	12	10	0
NSL2	65	6	13	14	12	0
NSL3	70	3	10	11	9	0
NSL4	65	9	16	17	14	0
NSL5	70	4	9	10	8	0

Noise mitigation measures will be required at all stages of construction except for the internal and external finishes stages. A combination of the mitigation measures outlined in section 6.3 should be used to reduce the levels of construction noise by the values listed in Table 12 above.

6.3 Noise Mitigation Recommendations

Best practice control measures for noise from construction sites are found within BS 5228 (2009 +A1 2014) part 1. Construction noise impacts are expected to vary during the construction phase of the project, this impact will depend on the distance between the construction activities and noise sensitive receptor. The contractor will ensure that all best practice noise and control methods will be used, to ensure any negative noise impacts at off-site noise sensitive locations are minimised.

The best practice measures set out in BS 5228 (2009) Part 1 includes guidance on several aspects of construction site mitigation measures, this includes the

- selection of quiet plant and equipment;
- noise control at source of the noise;
- screening, and;
- public liaison.

6.3.1 General Recommendations

This section of the report sets out noise mitigation options and detailed comment on each one specifically for this site.

Selection of Plant and Equipment

The noise impact of all plant and equipment should be assessed prior to selection of plant for the project. Where an item of plant is identified as noisy with the potential to cause a negative noise impact it should be reviewed to check if there is an alternative quieter version of the same plant to undertake the same construction task.

Noise Control at Source

Where replacing a noisy item of plant is not viable or practical, consideration should be given to control that noise at source. This includes modifying the piece of plant or equipment to generate less noise, using dampening to control vibration induced noise or rattling. Example best practice mitigation measures to be considered are as follows:

- All plant and equipment to be switched off when idling.
- The use of white noise reversing alarms.
- Restriction on the dropping and loading of materials to less sensitive hours.

- The use of local screening for noisy activities or works with hand tools.
- Not dropping materials onto hard surfaces and using rubber mats etc for the dropping of materials.
- Ensure all plant and equipment is well maintained and cleaned, all lubrication should be in line with manufacturers guidelines.

Screening

Screening when used correctly can be an effective method of reducing the construction noise impact on the NSL's. The use of site hoarding and careful selection of areas for noise works, using buildings on the site, site offices and the building being constructed to screen noise from the works.

Local screening of noisy works with the use of temporary acoustic barriers, examples are provided below:

- <https://ventac.com/acoustic-products/noisebreak-acoustic-barrier/>
- <https://echobarrier.com/>



Figure 15: Temporary Construction Noise Barrier © Ventac

Public Engagement

It is recommended that a public liaison officer should be put forward by the contractor to liaise with the local residents on matters relating to noise. Residents should be informed of any noise works scheduled where there is the potential to generate high levels of construction noise or if specialist works etc need to be conducted out of the working hours. This person should also be the point of contact for all complaints and be responsible for reviewing the noise monitoring results and exceedances.

Construction Noise Monitoring

Construction noise monitoring should be undertaken at periodic sample periods on the boundary with the nearest noise sensitive receptors.

Noise monitoring should be conducted in accordance with the International Standard ISO 1996: 2017: Acoustics – Description, measurement and assessment of environmental noise.

6.3.2 Site Specific Recommendations

Table 13 below outlines the recommended site-specific noise mitigation measures based on the attenuation required in Table 12.

Table 13: Attenuation required based on the construction noise predictions.

Construction Stage	Recommended Noise Mitigation Measure
Site Setup	<p>Erect a minimum 2.4m high site hoarding that blocks the line of sight between noise source and receiver.</p> <p>Example construction for the site hoarding would be as follows:</p> <ul style="list-style-type: none"> A 2.4m high and 9mm plywood (4.5 kg/m²). Barrier must be solid and not contain gaps at the bottom or between adjacent panels. <p>Local screening using the examples provided in General Recommendations section 6.3.1 are required around hand tools in addition to hoarding.</p> <p>An absorptive lining should be considered for screening around hand tools will need to have an absorptive lining to avoid reflections increasing noise at other receivers.</p> <p>On this project 5 NSL's have been identified it is recommended that a noise monitor should be placed on the boundary with each of nearest noise sensitive locations closest to the works i.e. NSL1, NSL2 or NSL5 is the most appropriate location.</p>
Substructure	<p>Site hoarding to block line of sight. Local screening around noisy plant and equipment.</p> <p>Noise monitoring as above.</p>
Superstructure	<p>Local screening around saws/hammers where possible. Use external new building to screen noise from works where possible.</p> <p>Noise monitoring as above.</p>
External finishes	<p>Local screening around hand tools.</p> <p>Noise monitoring as above.</p>

6.4 Vibration

Prediction of vibration levels at receptors is complex and dependent on several variables including the excavation method, the nature of the used equipment, the properties of the subsoil, the heterogeneity of the soil deposit, the distance to the receptor and the dynamic characteristic of the adjacent structures. Therefore, limits or threshold criteria as set out in BS5228-2 are applied for buildings and humans. As noted above, specific manufacturer limits will apply to sensitive equipment.

BS5228-2 provides some historic data on vibration levels measured on sites from different types of piling equipment under specific conditions e.g. soil type, however there is no data for other types of equipment. Taking account of the distances to bridge from the works and notwithstanding ground conditions present, it is not anticipated that the vibration criteria outlined above will not be exceeded. However, it is recommended, precautionary vibration monitoring at the boundary with the nearest sensitive receptors is undertaken during construction (for vibration generating works).

6.4.1 Vibration Monitoring

Vibration monitors should be considered during the substructure phase of the development between the site and NSL 1 as these are closest vibration sensitive locations on the boundary of the site.

The Vibration monitoring stations should continually log vibration levels using the Peak Particle Velocity parameter (PPV, mm/s) in the X, Y and Z directions, in accordance with BS ISO 4866: 2010: Mechanical vibration and shock – Vibration of fixed structures – Guidelines for the measurement of vibrations and evaluation of their effects on structures.

Vibration Limits

The recommended vibration limits to avoid cosmetic damage to buildings, as set out in:

- British Standard BS7385: 1993: Evaluation and measurement for vibration in buildings Part 2: Guide to damage levels from ground borne vibration, and;
- British Standard BS5228-2: 2009 + A1: 2014: Code of practice for noise and vibration control on construction and open sites – Vibration.

The standards note that minor structural damage can occur at vibration magnitudes which are greater than twice those presented in Table 14 and major damage to a building structure is possible at vibration magnitudes greater than four times the values set out in Table 14. Definitions of the damage categories are presented in BS 7385-1:1990.

Table 14: Transient vibration guide values for cosmetic damage.

Vibration PPV at the closest part of sensitive property to the source of vibration		
Frequency		
4 to 15 Hz	15 to 40Hz	40Hz and above
15 mm/s	20 mm/s	50 mm/s

Note 1: At frequencies below 4 Hz, a maximum displacement of 0.6 mm (zero to peak) is not to be exceeded.

Note2: It should be noted that these values are at the base of the building.

7 Operational Noise Impact

The operational noise sources from the development include traffic noise from cars parking in the parking spaces provided and noise from the communal amenity space.

This section includes an assessment of the operational noise impacts for noise from communal amenity space and the car parking. The plant and equipment for the project has not been determined at this time. The heating and cooling methodology will be developed as part of the design development stage; therefore, plant noise limits have been set out in this section of the report. As part of the building design an acoustic consultant should be engaged to review the plant noise emissions from the development to ensure that the upper noise limits outlined in this report are achieved.

Following the survey a model of the development using SoundPLAN 9.0 modelling software was developed to establish the noise levels from the development in a worst-case scenario. The software implements the algorithms contained in ISO 9613-1 and ISO 9613-2. The noise model considers:

- Distance attenuation,
- Source and receptor locations,
- Barrier effects (buildings, walls etc)
- Topographical elevations,
- Ground effects and absorption,
- Source sound power levels,
- Directivity and orientation of the source,
- Atmospheric attenuation and meteorological effects,

The acoustic model for the development has been developed based on attended noise survey and the proposed site location and predicted noise sources. As the site has potential to create noise impact at both day and nighttime, a worst-case scenario has been developed for both predicting the noise impact at the nearest noise sensitive locations. The assessment considers the noise impact of the communal space and car parking on the nearby residential receptors.

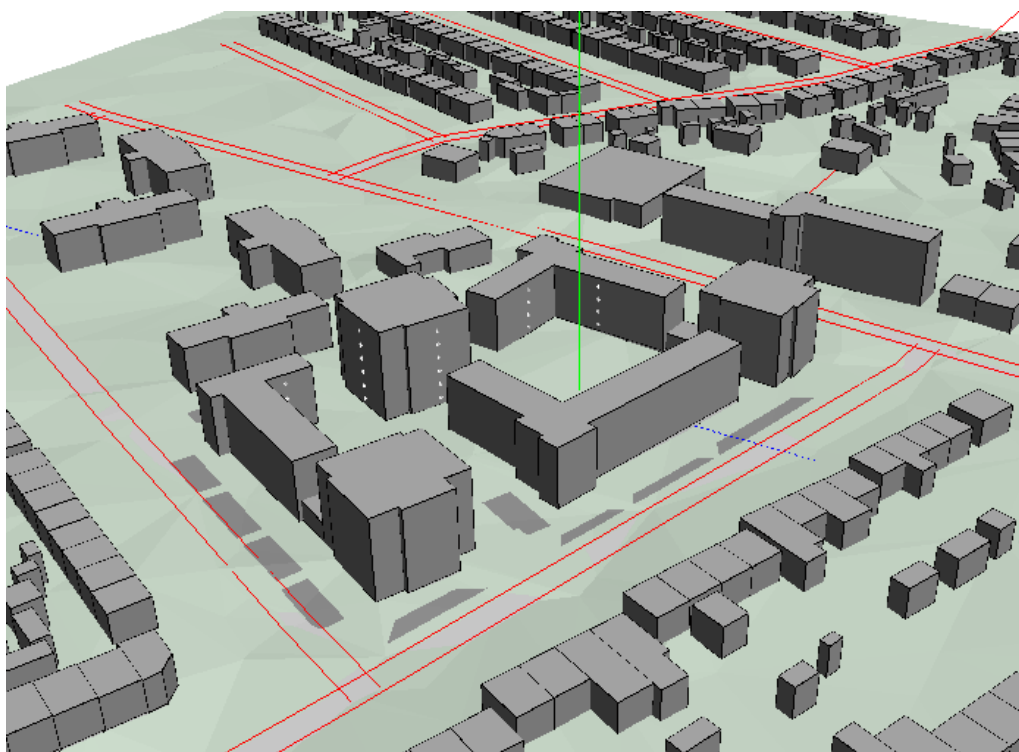


Figure 16: Screenshot from the model showing the communal amenity space.

7.1 Assessment of Operational Noise Impact

This section outlines the operational noise impact from the residents using the communal outdoor space and car parking on the site.

The proposed plans include for a communal open space at ground floor level and surface level car parking spaces. The operational noise impact considers the noise impact both noise sources on the nearest noise sensitive receptors.

7.1.1 Daytime Scenario

As the new development has the potential to generate noise with different characteristics for both the day and nighttime, a model has been undertaken for both the day and nighttime operations of the proposed development.

The daytime situation assumes the following noise sources:

- 4 carpark movements per hour per parking space during daytime hours of 07:00-23:00
- Use of the ground level external amenity spaces during the hours of 16:00-23:00.
- Assumed occupancy of 12 persons in the western amenity space, of which 1 in 3 are talking at once with, as per Table 15 below.
- Assumed occupancy of 24 persons in the central courtyard amenity space, of which 1 in 3 are talking at once, as per Table 15 below.
- Assumed occupancy of 18 persons in the eastern block G amenity space, of which 1 in 3 are talking at once with, as per Table 15 below.

Table 15: AAAC Patron noise levels at 1m distance for the outdoor communal space.

Description	Source Sound Pressure Level L_{eq} (dB) at Octave Band Centre Frequency, Hz							Overall SPL dBA
	125	250	500	1000	2000	4000	8000	
1 person talking with normal voice	47	56	58	52	48	44	39	58

Noise Impact (BS 4142 Assessment) for Daytime Hours

The noise impact at the nearest noise sensitive location (NSL1-NSL5) has been assessed in accordance with BS 4142. The predicted noise from the development is worst case at NSL2 due to its proximity to the development. The BS4142 at NSL2 is outlined in Table 16 below however all locations have been assessed and are predicted to comply with the BS4142 criteria.

Table 16: BS4142 Assessment for daytime period

Results		Relevant BS 4142 Clause	Commentary
Predicted specific sound level (daytime)	$L_{Aeq(15min)} = 48dB$	7.3.6	As the new development is not yet existing, the noise levels have been predicted using SoundPlan 9.0 modelling software. Worst case specific sound predicted at NSL2 as this is closest to the proposed development.
Residual sound level (daytime)	$L_{Aeq(60min)} = 54dB$	7.3.2	The residual sound level was dominated by road traffic noise. Background location A4 assessed as this is representative for worst case receptor (NSL2).

Results		Relevant BS 4142 Clause	Commentary
Background sound level (daytime)	$L_{A90(60min)} = 51\text{dB}$	8.1.2 8.4	The L_{A90} sound level was measured at the noise sensitive location with the source absent.
Assessment made during the daytime, so the reference time interval is 1 hour		7.2	
Specific sound level as predicted	$L_{Aeq(15min)} = 48\text{dB}$	7.3.6	The specific sound has been predicted by calculation alone as the new development was not existing at the time.
Acoustic feature correction	+0dB	9.2 9.3.2	It is not anticipated that the specific sound will have any impulsive, tonal or intermittent characteristics.
Rating level	$(48 + 0)\text{ dB} = 48\text{dB}$	9.2	
Background sound level	$L_{A90(60min)} = 51\text{dB}$	8	
Excess of rating over background sound level	$(48 - 51)\text{ dB} = -3\text{dB}$	11	Assessment indicates that no adverse impact is likely on the noise sensitive locations as the specific sound is 3dB below the background levels and is lower than the residual sound. Context has also been considered.
Uncertainty of the assessment	Not significant	10	The specific sound is a worst-case prediction as the assessment assumes multiple carpark movements every hour, large groups of persons occupying the amenity spaces during evening hours and one in three speaking at once.

Based on the review of the noise sources and the BS 4142 assessment it is predicted that the noise emanating from the proposed development will not have any adverse impact on the surrounding noise sensitive locations.

Consideration of Tonality and Impulsivity

An assessment for tonality and impulsivity was conducted to evaluate noise emissions from the proposed development. Findings indicate that the noise emissions are lower than both the background and residual noise levels in the area. Consequently, the emissions are unlikely to produce tonal or impulsive characteristics that will have an impact at the noise sensitive receptors.

EPA NG4

NG4 recommends a daytime criterion of (07:00hrs – 19:00hrs) 55dB $L_{Aeq,T}$, the predicted noise emissions from the development are 48 dBA at NSL2, with no tonality or impulsivity, therefore the NG4 criteria is expected to be achieved. Table 17 below outlines the predicted noise impact at each noise sensitive location, the project criteria and compliance with the project criteria.

Table 17: Predicted noise levels at each noise sensitive location.

Location	Distance to centre of the site (Meters)	EPA NG4 Daytime Criteria $L_{eq,T}$ dBA	Predicted Noise Level from Proposed Development $L_{AR,T}$ dBA	Compliance
NSL1	115	55	47	Compliant
NSL2	75	55	48	Compliant
NSL3	50	55	38	Compliant
NSL4	40	55	36	Compliant
NSL5	55	55	45	Compliant

EPA NG4 Evening Time

NG4 recommends an evening-time criterion of (19:00hrs – 23:00hrs) 50dB $L_{Aeq,T}$. The predicted noise emissions from the development are 48 dBA at NSL2, with no tonality or impulsivity, therefore the NG4 criteria is expected to be achieved. Table 18 below outlines the predicted noise impact at each noise sensitive location, the project criteria and compliance with the project criteria.

Table 18: Predicted noise levels at each noise sensitive location.

Location	Distance to centre of the site (Meters)	EPA NG4 Evening Criteria $L_{eq,T}$ dBA	Predicted Noise Level from Proposed Development $L_{AR,T}$ dBA	Compliance
NSL1	115	50	47	Compliant
NSL2	75	50	48	Compliant
NSL3	50	50	38	Compliant
NSL4	40	50	36	Compliant
NSL5	55	50	45	Compliant

7.1.2 Night-time Scenario

The proposed development has potential to generate noise impact at nighttime.

The nighttime situation assumes the following noise sources:

- 2 carpark movements per hour per parking space during daytime hours of 23:00-07:00.
- Use of the ground level external amenity spaces during the hours of 23:00-01:00.
- Assumed occupancy of 12 persons in the western amenity space, of which 1 in 3 are talking at once with, as per Table 15 below.
- Assumed occupancy of 24 persons in the central courtyard amenity space, of which 1 in 3 are talking at once, as per Table 15 below.
- Assumed occupancy of 18 persons in the eastern block G amenity space, of which 1 in 3 are talking at once with, as per Table 15 below.

BS4142 Nighttime Assessment

The noise impact at the nearest noise sensitive location (NSL1-NSL5) has been assessed in accordance with BS 4142. The predicted noise from the development is worst case at NSL2 due to its proximity to the development. Residual and background sound levels are based on averaged attended measurement results. The BS4142 at NSL2 is outlined in Table 19 below however all locations have been assessed and are predicted to comply with the BS4142 criteria.

Table 19: BS4142 Assessment for nighttime period

Results		Relevant BS 4142 Clause	Commentary
Predicted specific sound level (nighttime)	$L_{Aeq(15min)} = 45dB$	7.3.6	As the new development is not yet existing, the noise levels have been predicted using SoundPlan 9.0 modelling software. Worst case specific sound predicted at NSL2 as this is closest to the proposed development.
Residual sound level (nighttime)	$L_{Aeq(15min)} = 53dB$	7.3.2	The residual sound level was dominated by road traffic noise on the nearby roads. Background location A4 assessed as this is representative for worst case receptor (NSL2).
Background sound level (nighttime)	$L_{A90(15min)} = 51dB$	8.1.2 8.4	The L_{A90} sound level was measured at the noise sensitive location with the source absent.
Assessment made during the daytime, so the reference time interval is 15 minutes		7.2	
Specific sound level as predicted	$L_{Aeq(15min)} = 45dB$	7.3.6	The specific sound has been predicted by calculation alone as the new development was not existing at the time of the survey.
Acoustic feature correction	+0dB	9.2 9.3.2	It is not anticipated that the specific sound will have any impulsive, tonal or intermittent characteristics.
Rating level	$(45 + 0) dB = 45dB$	9.2	
Background sound level	$L_{A90(15min)} = 51dB$	8	
Excess of rating over background sound level	$(45 - 51) dB = -6dB$	11	Assessment indicates that no adverse impact is likely on the noise sensitive locations at nighttime as the specific sound is 6dB below the background levels and is lower than the residual sound. Context has also been considered.
Uncertainty of the assessment	Not significant	10	The specific sound is a worst-case prediction as the assessment assumes multiple carpark movements every hour, large groups of persons occupying the amenity space during nighttime hours and one in three speaking at once.

Based on the review of the noise sources and the BS 4142 assessment it is predicted that the noise emanating from the proposed development will not have any adverse impact on the surrounding noise sensitive locations.

Consideration of Tonality and Impulsivity

An assessment for tonality and impulsivity was conducted to evaluate noise emissions from the proposed development. Findings indicate that the noise emissions are significantly lower than both the background and residual noise levels in the area. Consequently, the emissions are unlikely to produce tonal or impulsive characteristics that will have an impact at the noise sensitive receptors.

EPA NG4

NG4 recommends a daytime criterion of (23:00hrs – 07:00hrs) 45dB $L_{Aeq,T}$, the predicted noise emissions from the development are 44 dBA at NSL4, with no tonality or impulsivity, therefore the NG4 criteria is expected to be achieved. Table 20 below outlines the predicted noise impact at each noise sensitive location, the project criteria and compliance with the project criteria.

Table 20: Predicted noise levels at each noise sensitive location.

Location	Distance to centre of the site (Meters)	EPA NG4 Nighttime Criteria $L_{eq,T}$ dBA	Predicted Noise Level from Proposed Development $L_{eq,T}$ dBA	Compliance
NSL1	115	45	44	Compliant
NSL2	75	45	45	Compliant
NSL3	50	45	35	Compliant
NSL4	40	45	33	Compliant
NSL5	55	45	42	Compliant

Impact of Traffic Movements on Communal Outdoor Spaces

The impact of noise from cars parking at the spaces provided onsite has been assessed with regard to ensuring the noise levels in the outdoor amenity spaces are recommended to achieve <50-55dBA. Based on the modelling and assessment the predicted noise levels from the car park movements are expected to achieve <50 dBA when considered over the full day time period ($L_{Aeq,16hr}$).

7.1.3 Modelling Assumptions

The following assumptions were made throughout the modelling and assessment:

- Assessment based on the noise measurements undertaken on 29th of November 2024.
- Model assumes a worst-case operating scenario as outlined in Section 7 above.
- Modelling based on the drawings, layouts and information provided.
- Assessment based on proposed new development only.
- External amenity noise sources assumed as outlined in Section 7 above.

7.1.4 Mechanical Plant & Equipment

As the proposed development is currently at planning stage, the mechanical plant and equipment information is not available for the project. It is currently understood that specific mechanical plant and equipment will not be further developed and specified until further in the design process. The acoustic consultant at design stage for the project should ensure that the above criteria outlined in Section 3 of this report is achieved.

8 Conclusion

Wave Dynamics were engaged by Dublin City Council as the acoustic consultants to provide an Acoustic Design Statement including an Inward Noise Impact, Construction Noise Assessment and Operational Noise Assessment for the planning application of a proposed new residential development at Cromcastle Park, Kilmore, Dublin 5.

The project consists of the redevelopment of the existing Cromcastle Court and Old Coal Yard sites, and the construction of 7 no. apartment blocks, ranging in height from 4-6 storeys, containing a total of 152 apartments at the Cromcastle Court/Old Coal Yard Sites, Dublin 5. The site is bounded by Cromcastle Park, Kilmore Road and Kilbarron Road, Dublin 5. The site is split by Kilmore Road, with a single block of Age Friendly proposed to the East of Kilmore Road.

The existing 1.63 ha site currently comprises of 3 no. 4 storey apartment blocks and a welfare depot on Cromcastle Court.

The proposed development, which will be managed by Dublin City Council, comprises of:

- The demolition of the existing Cromcastle Court blocks, ancillary structures, boundary walls/railings and site clearance works, and the demolition of welfare depot.
- Construction of 152 homes between 2 no. sites, comprising of 90 no. 1 bed apartments, 47 no. 2 bed apartments and 15 no. 3 bed Duplexes.
- This consist of 118 new homes on Cromcastle Court across 6 no. buildings between 4 and 6 storeys, and 34 new age friendly homes proposed on the Old Coal Yard site, within 1 building, between 4 and 5 storeys.
- Breakdown of homes per block as follows
 - Block A1 is 5 storeys with 18 units (9 no. 1 bed units and 9 no. 2 bed units)
 - Block B1 is 4 storeys with 27 units (16 no. 1 bed units, 3 no. 2 bed units and 8 no. 3 bed Duplex units)
 - Block C1 is 5 storeys with 18 units (9 no. 1 bed units and 9 no. 2 bed units)
 - Block D1 is 4 storeys with 15 units (11 no. 1 bed units and 4 no. 3 bed Duplex units)
 - Block E1 is 6 storeys with 20 units (5 no. 1 bed units and 15 no. 2 bed units)
 - Block F1 is 4 storeys with 20 units (6 no. 1 bed units, 11 no. 2 bed units & 3 no 3 bed Duplex units)
 - Block G1 is between 4 and 5 storeys with 34 units (32 no. 1 bed, UD units and 2 no. 1 bed UD+ units)
- A community facility (132sqm) at the ground floor of E1 with associated external spill out space (124sqm) are also proposed as part of the development to fulfil COU25 requirements of the DCC Development Plan.
- 244 long stay secured bicycle spaces, with 76 short stay external bicycle parking spaces
- 57 no. residential parking spaces, including 4 accessible parking spaces, mixed between on-street and off-street parking spaces.
- Provision of public and private open public lighting, upgraded public realm, 1741.5sqm of public open space, and 3376.1sqm of secure communal open space split between an 882.6sqm amenity space for Block G1, and an 2493.5sqm enclosed courtyard spaces for the remaining blocks.
- Construction of new ESB substation and meter rooms, stores, bin and bicycle storage, plant rooms, ancillary structure, and
- All ancillary road, site services, development works and necessary enabling works above and below ground.

Inward Noise Impact Assessment

A Stage 1 and Stage 2 ProPG assessment have been undertaken. As part of the stage one assessment to categorise the site, a baseline noise survey was undertaken to measure the existing noise levels. Following the baseline noise survey a site noise model of the road noise impact was produced and calibrated with the site measurements. A review of the noise levels on the site was conducted, this included the L_{AFmax} and L_{Aeq} , the site has subsequently been characterised as medium to high risk at the southern elevations of Blocks B and C, along

with the southern and eastern elevations of Block A and G, and medium to low risk across the remainder of the site. Mitigation measures are required to control the onset noise levels of the facades located in the medium to high risk contour, this mitigation has been developed in the form of façade envelope performance and the provision of external communal amenity space that achieves compliance with external noise levels.

Break-in noise calculations to predict the internal noise levels from road traffic noise were conducted as part of the assessment. Consideration has also been given to the future growth of the road network. Following the assessment, the building envelope performance requirements were determined to achieve adequate internal noise levels. The performance specification for the building envelope has been provided in this report which includes the external walls, glazing, roof and ventilation requirements.

External Amenity Noise Levels

The external amenity spaces on the development includes balconies and communal amenity spaces at ground level. Appropriate amenity has been provided on the development for residents using a combination of the balconies on suitable facades and the communal amenity space on ground level. This is in line with element 3(v) of ProPG.

Based on the recommendations in this report it is predicted that the internal and external noise levels will achieve the targeted noise levels in line with BS 8233:2014 and ProPG 2017 guidance.

Construction Noise Impact

The construction noise impact is predicted to exceed the BS 5228 requirements **without any mitigation** measures for the Site Set Up, Demolition, Substructure and Superstructure stages of the project.

General and site-specific mitigation measures have been provided in this report to bring the construction noise levels down within the limits of BS 5228. Following **the noise mitigation recommendations in this report, the construction phase is expected to meet the requirements** of BS 5228 based on the information provided to WDA.

In addition to the mitigation measures, guidance has been provided in this report for construction noise monitoring during the construction period to manage noise levels from construction noise.

Vibration Monitoring

Vibration monitors should be considered during the demolition and substructure phase of the development between the site and NSL 2 to manage vibration during the construction period.

Operational Noise

An operational noise impact assessment from the noise generated in the communal amenity space, the traffic generated on the development and car parking was developed. It is predicted that the development will not cause a negative noise impact on the nearby noise sensitive locations. The mechanical plant and equipment specification is not available at this stage of the project, the proposed method of heating, cooling and ventilation is not currently available. Specific noise limits have been provided in this report for mechanical plant and equipment, at design development stage once the plant and equipment information is available it should be assessed for compliance with the criteria outlined in this report.

Appendix A – Glossary of Terms

Ambient Noise	The totally encompassing sound in a given situation at a given time, usually composed of sound from all the noise sources in the area.
Background Noise	The steady existing noise level present without contribution from any intermittent sources. The A-weighted sound pressure level of the residual noise at the assessment position that is exceeded for 90 per cent of a given time interval, T ($L_{AF90,T}$).
dB	Decibel - The scale in which sound pressure level is expressed. It is defined as 20 times the logarithm of the ratio between the RMS pressure of the sound field and the reference pressure of 20 micro-pascals (20 μ Pa).
dB(A)	An 'A-weighted decibel' - a measure of the overall noise level of sound across the audible frequency range (20 Hz – 20 kHz) with A-frequency weighting (i.e. 'A'-weighting) to compensate for the varying sensitivity of the human ear to sound at different frequencies.
Hertz	The unit of sound frequency in cycles per second.
L_{A90}	A-weighted, sound level just exceeded for 90% of the measurement period and calculated by statistical analysis. See also the background noise level.
L_{Aeq}	A-weighted, equivalent continuous sound level.
L_{AFmax}	A-weighted, maximum, sound level measured with a fast time-constant - maximum is not peak
L_{den}	day-evening-night noise level, the A-weighted, L_{eq} (equivalent noise level) over a whole day, but with a penalty of 10 dB(A) for night-time noise (23:00-07:00) and 5 dB(A) for evening noise (19:00-23:00), also known as the day evening night noise indicator

Appendix B – Façade Mark Ups



Glazed Elements Specification

- █ 35 dB R_w
- █ Standard Double Glazing



Project: Cromcastle Court

Title: Glazing Markup - Site Plan

Prepared By: Cathal Reck

Reviewed By: Sean Rocks

Date: 06/08/2025