
Housing Quality Assessment Report
to accompany Part 8 Planning Application to Dublin City Council
**Social Housing Bundle 5, Development at
Cherry Orchard, Dublin 10**

**SEÁN
HARRINGTON
ARCHITECTS**

Seán Harrington Architects
3rd Floor
121/122 Capel Street
Dublin 1, Ireland

t 01 873 3422
e info@sha.ie

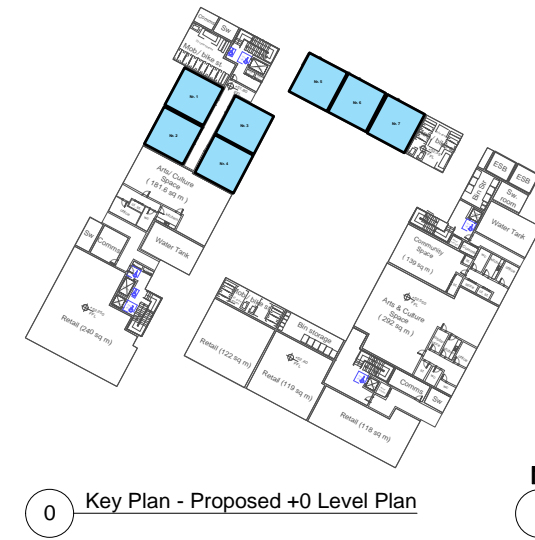
Schedule of Apartments: Cherry Orchard Road, Ballyfermot

| Unit Number | 1B/2B/3B/4B | Unit Type | Floor Area Achieved sq m | Min. Target Area sq m | 10% GFA | 10% > Floor Area | Ceiling Height | Aspect | Orientation | Private Outdoor Space | Min. Private Outdoor Space | Additional features |
|-------------------|-------------|------------|--------------------------|-----------------------|------------|------------------|----------------|--------|-------------|-----------------------|----------------------------|---------------------|
| Level +0 | | | | | | | | | | | | |
| Nr. 1 | 1B2P | Apt 1B2P.1 | 50.40 sq m | 45 sq m | 49.50 sq m | True | 2.7 m | Single | W | 5sq m | 5 sq m | |
| Nr. 2 | 1B2P | Apt 1B2P.1 | 50.40 sq m | 45 sq m | 49.50 sq m | True | 2.7 m | Single | W | 5sq m | 5 sq m | |
| Nr. 3 | 1B2P | Apt 1B2P.1 | 50.40 sq m | 45 sq m | 49.50 sq m | True | 2.7 m | Single | E | 5sq m | 5 sq m | |
| Nr. 4 | 1B2P | Apt 1B2P.1 | 50.40 sq m | 45 sq m | 49.50 sq m | True | 2.7 m | Single | E | 5sq m | 5 sq m | |
| Nr. 5 | 1B2P | Apt 1B2P.1 | 50.40 sq m | 45 sq m | 49.50 sq m | True | 2.7 m | Dual | N+S | 5sq m | 5 sq m | |
| Nr. 6 | 1B2P | Apt 1B2P.1 | 50.40 sq m | 45 sq m | 49.50 sq m | True | 2.7 m | Dual | N+S | 5sq m | 5 sq m | |
| Nr. 7 | 1B2P | Apt 1B2P.1 | 50.40 sq m | 45 sq m | 49.50 sq m | True | 2.7 m | Dual | N+S | 5sq m | 5 sq m | |
| Total Net: | | | 352.80 sq m | | | | | | | | | |
| Level +1 | | | | | | | | | | | | |
| Nr. 08 | 2B3P | Apt 2B3P | 70.20 sq m | 63 sq m | 69.30 sq m | True | 2.6 m | Dual | N+E | 7sq m | 6 sq m | |
| Nr. 09 | 1B2P | Apt 1B2P.1 | 50.40 sq m | 45 sq m | 49.50 sq m | True | 2.6 m | Single | W | 5sq m | 5 sq m | |
| Nr. 10 | 1B2P | Apt 1B2P.1 | 50.40 sq m | 45 sq m | 49.50 sq m | True | 2.6 m | Single | E | 5sq m | 5 sq m | |
| Nr. 11 | 1B2P | Apt 1B2P.1 | 50.40 sq m | 45 sq m | 49.50 sq m | True | 2.6 m | Single | W | 5sq m | 5 sq m | |
| Nr. 12 | 1B2P | Apt 1B2P.1 | 50.40 sq m | 45 sq m | 49.50 sq m | True | 2.6 m | Single | E | 5sq m | 5 sq m | |
| Nr. 13 | 1B2P | Apt 1B2P.1 | 50.40 sq m | 45 sq m | 49.50 sq m | True | 2.6 m | Single | W | 5sq m | 5 sq m | |
| Nr. 14 | 1B2P | Apt 1B2P.2 | 53.64 sq m | 45 sq m | 49.50 sq m | True | 2.6 m | Single | E | 5sq m | 5 sq m | UD Apartment |
| Nr. 15 | 1B2P | Apt 1B2P.1 | 50.40 sq m | 45 sq m | 49.50 sq m | True | 2.6 m | Single | W | 5sq m | 5 sq m | |
| Nr. 16 | 1B2P | Apt 1B2P.2 | 53.64 sq m | 45 sq m | 49.50 sq m | True | 2.6 m | Single | E | 5sq m | 5 sq m | UD Apartment |
| Nr. 17 | 1B2P | Apt 1B2P.2 | 53.64 sq m | 45 sq m | 49.50 sq m | True | 2.6 m | Single | W | 5sq m | 5 sq m | UD Apartment |
| Nr. 18 | 1B2P | Apt 1B2P.2 | 53.64 sq m | 45 sq m | 49.50 sq m | True | 2.6 m | Single | W | 5sq m | 5 sq m | UD Apartment |
| Nr. 19 | 2B3P | Apt 2B3P | 70.20 sq m | 63 sq m | 69.30 sq m | True | 2.6 m | Dual | S+W | 7sq m | 6 sq m | |
| Nr. 20 | 1B2P | Apt 1B2P.1 | 50.40 sq m | 45 sq m | 49.50 sq m | True | 2.6 m | Dual | S+E | 5sq m | 5 sq m | |
| Nr. 21 | 1B2P | Apt 1B2P.1 | 50.40 sq m | 45 sq m | 49.50 sq m | True | 2.6 m | Dual | N+S | 5sq m | 5 sq m | |
| Nr. 22 | 1B2P | Apt 1B2P.2 | 53.64 sq m | 45 sq m | 49.50 sq m | True | 2.6 m | Dual | N+S | 5sq m | 5 sq m | UD Apartment |
| Nr. 23 | 1B2P | Apt 1B2P.2 | 53.64 sq m | 45 sq m | 49.50 sq m | True | 2.6 m | Dual | N+S | 5sq m | 5 sq m | UD Apartment |
| Nr. 24 | 1B2P | Apt 1B2P.2 | 53.64 sq m | 45 sq m | 49.50 sq m | True | 2.6 m | Dual | N+S | 5sq m | 5 sq m | UD Apartment |
| Nr. 25 | 1B2P | Apt 1B2P.1 | 50.40 sq m | 45 sq m | 49.50 sq m | True | 2.6 m | Dual | N+S | 5sq m | 5 sq m | |
| Nr. 26 | 2B3P | Apt 2B3P | 70.20 sq m | 63 sq m | 69.30 sq m | True | 2.6 m | Dual | S+E | 7sq m | 6 sq m | |
| Nr. 27 | 1B2P | Apt 1B2P.2 | 53.64 sq m | 45 sq m | 49.50 sq m | True | 2.6 m | Dual | S+E | 5sq m | 5 sq m | UD Apartment |
| Nr. 28 | 1B2P | Apt 1B2P.1 | 50.40 sq m | 45 sq m | 49.50 sq m | True | 2.6 m | Single | W | 5sq m | 5 sq m | |
| Nr. 29 | 1B2P | Apt 1B2P.1 | 50.40 sq m | 45 sq m | 49.50 sq m | True | 2.6 m | Single | E | 5sq m | 5 sq m | |
| Nr. 30 | 1B2P | Apt 1B2P.1 | 50.40 sq m | 45 sq m | 49.50 sq m | True | 2.6 m | Single | W | 5sq m | 5 sq m | |
| Nr. 31 | 1B2P | Apt 1B2P.2 | 53.64 sq m | 45 sq m | 49.50 sq m | True | 2.6 m | Single | E | 5sq m | 5 sq m | UD Apartment |
| Nr. 32 | 1B2P | Apt 1B2P.1 | 50.40 sq m | 45 sq m | 49.50 sq m | True | 2.6 m | Single | W | 5sq m | 5 sq m | |
| Nr. 33 | 1B2P | Apt 1B2P.1 | 50.40 sq m | 45 sq m | 49.50 sq m | True | 2.6 m | Single | E | 5sq m | 5 sq m | |
| Nr. 34 | 1B2P | Apt 1B2P.2 | 53.64 sq m | 45 sq m | 49.50 sq m | True | 2.6 m | Dual | N+E | 5sq m | 5 sq m | UD Apartment |
| Nr. 35 | 2B3P | Apt 2B3P | 70.20 sq m | 63 sq m | 69.30 sq m | True | 2.6 m | Dual | N+E | 7sq m | 6 sq m | |
| Nr. 36 | 1B2P | Apt 1B2P.4 | 50.40 sq m | 45 sq m | 49.50 sq m | True | 2.6 m | Dual | N+S | 5sq m | 5 sq m | |
| Nr. 37 | 1B2P | Apt 1B2P.4 | 50.40 sq m | 45 sq m | 49.50 sq m | True | 2.6 m | Dual | N+S | 5sq m | 5 sq m | |
| Nr. 38 | 1B2P | Apt 1B2P.4 | 50.40 sq m | 45 sq m | 49.50 sq m | True | 2.6 m | Dual | N+S | 5sq m | 5 sq m | |
| Nr. 39 | 1B2P | Apt 1B2P.4 | 50.40 sq m | 45 sq m | 49.50 sq m | True | 2.6 m | Dual | N+S | 5sq m | 5 sq m | |
| Total Net: | | | 1724.40 sq m | | | | | | | | | |
| Level +2 | | | | | | | | | | | | |
| Nr. 40 | 2B3P | Apt 2B3P | 70.20 sq m | 63 sq m | 69.30 sq m | True | 2.6 m | Dual | N+E | 7sq m | 3 sq m | |
| Nr. 41 | 1B2P | Apt 1B2P.1 | 50.40 sq m | 45 sq m | 49.50 sq m | True | 2.6 m | Single | W | 5sq m | 5 sq m | |
| Nr. 42 | 1B2P | Apt 1B2P.1 | 50.40 sq m | 45 sq m | 49.50 sq m | True | 2.6 m | Single | E | 5sq m | 5 sq m | |
| Nr. 43 | 1B2P | Apt 1B2P.1 | 50.40 sq m | 45 sq m | 49.50 sq m | True | 2.6 m | Single | W | 5sq m | 5 sq m | |
| Nr. 44 | 1B2P | Apt 1B2P.1 | 50.40 sq m | 45 sq m | 49.50 sq m | True | 2.6 m | Single | E | 5sq m | 5 sq m | |
| Nr. 45 | 1B2P | Apt 1B2P.1 | 50.40 sq m | 45 sq m | 49.50 sq m | True | 2.6 m | Single | W | 5sq m | 5 sq m | |
| Nr. 46 | 1B2P | Apt 1B2P.2 | 53.64 sq m | 45 sq m | 49.50 sq m | True | 2.6 m | Single | E | 5sq m | 5 sq m | UD Apartment |
| Nr. 47 | 1B2P | Apt 1B2P.1 | 50.40 sq m | 45 sq m | 49.50 sq m | True | 2.6 m | Single | W | 5sq m | 5 sq m | |
| Nr. 48 | 1B2P | Apt 1B2P.2 | 53.64 sq m | 45 sq m | 49.50 sq m | True | 2.6 m | Single | E | 5sq m | 5 sq m | UD Apartment |
| Nr. 49 | 1B2P | Apt 1B2P.2 | 53.64 sq m | 45 sq m | 49.50 sq m | True | 2.6 m | Single | W | 5sq m | 5 sq m | UD Apartment |
| Nr. 50 | 1B2P | Apt 1B2P.2 | 53.64 sq m | 45 sq m | 49.50 sq m | True | 2.6 m | Single | W | 5sq m | 5 sq m | UD Apartment |
| Nr. 51 | 2B3P | Apt 2B3P | 70.20 sq m | 63 sq m | 69.30 sq m | True | 2.6 m | Dual | S+E | 7sq m | 3 sq m | |
| Nr. 52 | 1B2P | Apt 1B2P.1 | 50.40 sq m | 45 sq m | 49.50 sq m | True | 2.6 m | Dual | S+W | 5sq m | 5 sq m | |
| Nr. 53 | 1B2P | Apt 1B2P.1 | 50.40 sq m | 45 sq m | 49.50 sq m | True | 2.6 m | Dual | N+S | 5sq m | 5 sq m | |
| Nr. 54 | 1B2P | Apt 1B2P.2 | 53.64 sq m | 45 sq m | 49.50 sq m | True | 2.6 m | Dual | N+S | 5sq m | 5 sq m | UD Apartment |
| Nr. 55 | 1B2P | Apt 1B2P.2 | 53.64 sq m | 45 sq m | 49.50 sq m | True | 2.6 m | Dual | N+S | 5sq m | 5 sq m | UD Apartment |
| Nr. 56 | 1B2P | Apt 1B2P.2 | 53.64 sq m | 45 sq m | 49.50 sq m | True | 2.6 m | Dual | N+S | 5sq m | 5 sq m | UD Apartment |
| Nr. 57 | 1B2P | Apt 1B2P.1 | 50.40 sq m | 45 sq m | 49.50 sq m | True | 2.6 m | Dual | N+S | 5sq m | 5 sq m | |
| Nr. 58 | 2B3P | Apt 2B3P | 70.20 sq m | 63 sq m | 69.30 sq m | True | 2.6 m | Dual | S+E | 7sq m | 3 sq m | |
| Nr. 59 | 1B2P | Apt 1B2P.2 | 53.64 sq m | 45 sq m | 49.50 sq m | True | 2.6 m | Dual | S+E | 5sq m | 5 sq m | UD Apartment |
| Nr. 60 | 1B2P | Apt 1B2P.1 | 50.40 sq m | 45 sq m | 49.50 sq m | True | 2.6 m | Single | W | 5sq m | 5 sq m | |
| Nr. 61 | 1B2P | Apt 1B2P.1 | 50.40 sq m | 45 sq m | 49.50 sq m | True | 2.6 m | Single | E | 5sq m | 5 sq m | |
| Nr. 62 | 1B2P | Apt 1B2P.1 | 50.40 sq m | 45 sq m | 49.50 sq m | True | 2.6 m | Single | W | 5sq m | 5 sq m | |
| Nr. 63 | 1B2P | Apt 1B2P.2 | 53.64 sq m | 45 sq m | 49.50 sq m | True | 2.6 m | Single | E | 5sq m | 5 sq m | UD Apartment |
| Nr. 64 | 1B2P | Apt 1B2P.1 | 50.40 sq m | 45 sq m | 49.50 sq m | True | 2.6 m | Single | W | 5sq m | 5 sq m | |
| Nr. 65 | 1B2P | Apt 1B2P.1 | 50.40 sq m | 45 sq m | 49.50 sq m | True | 2.6 m | Single | E | 5sq m | 5 sq m | |
| Nr. 66 | 1B2P | Apt 1B2P.2 | 53.64 sq m | 45 sq m | 49.50 sq m | True | 2.6 m | Dual | N+E | 5sq m | 5 sq m | UD Apartment |
| Nr. 67 | 2B3P | Apt 2B3P | 70.20 sq m | 63 sq m | 69.30 sq m | True | 2.6 m | Dual | N+E | 7sq m | 3 sq m | |
| Nr. 68 | 1B2P | Apt 1B2P.4 | 50.40 sq m | 45 sq m | 49.50 sq m | True | 2.6 m | Dual | N+S | 5sq m | 5 sq m | |
| Nr. 69 | 1B2P | Apt 1B2P.4 | 50.40 sq m | 45 sq m | 49.50 sq m | True | 2.6 m | Dual | N+S | 5sq m | 5 sq m | |
| Nr. 70 | 1B2P | Apt 1B2P.4 | 50.40 sq m | 45 sq m | 49.50 sq m | True | 2.6 m | Dual | N+S | 5sq m | 5 sq m | |
| Nr. 71 | 1B2P | Apt 1B2P.4 | 50.40 sq m | 45 sq m | 49.50 sq m | True | 2.6 m | Dual | N+S | 5sq m | 5 sq m | |
| Total Net: | | | 1724.40 sq m | | | | | | | | | |

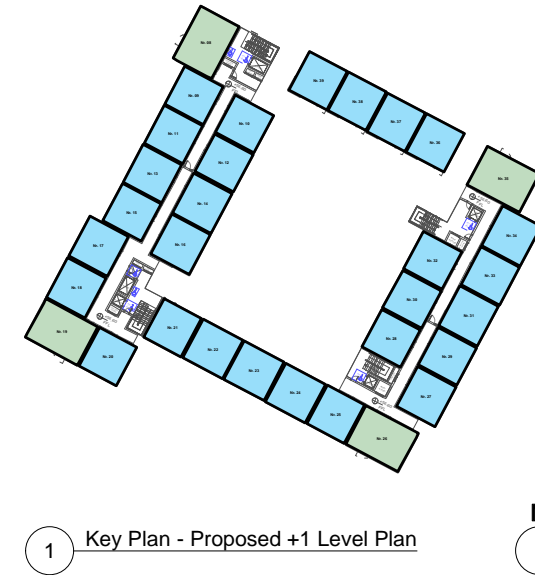
Housing Quality Assessment

Legend

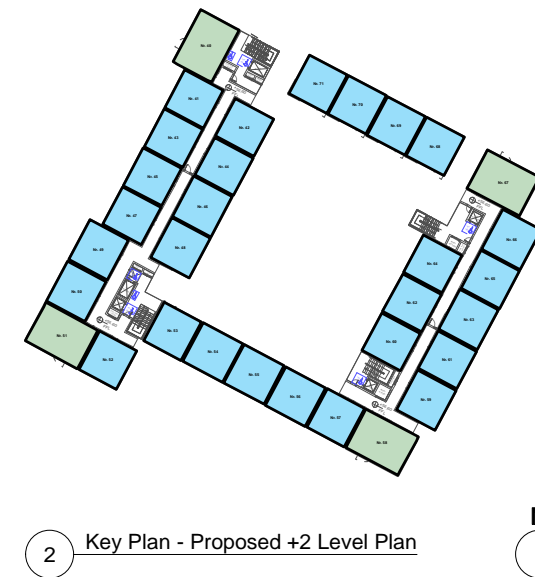
- 1B2P
- 2B3P



0 Key Plan - Proposed +0 Level Plan



1 Key Plan - Proposed +1 Level Plan



2 Key Plan - Proposed +2 Level Plan

| Level +3 | | | | | | | | | | | | |
|------------|------|------------|--------------|---------|------------|------|-------|--------|-----|-------|--------|--------------|
| Nr. 72 | 2B3P | Apt_2B3P | 70.20 sq m | 63 sq m | 69.30 sq m | True | 2.6 m | Dual | E+N | 7sq m | 6 sq m | |
| Nr. 73 | 1B2P | Apt_1B2P.1 | 50.40 sq m | 45 sq m | 49.50 sq m | True | 2.6 m | Single | W | 5sq m | 5 sq m | |
| Nr. 74 | 1B2P | Apt_1B2P.1 | 50.40 sq m | 45 sq m | 49.50 sq m | True | 2.6 m | Single | E | 5sq m | 5 sq m | |
| Nr. 75 | 1B2P | Apt_1B2P.1 | 50.40 sq m | 45 sq m | 49.50 sq m | True | 2.6 m | Single | W | 5sq m | 5 sq m | |
| Nr. 76 | 1B2P | Apt_1B2P.1 | 50.40 sq m | 45 sq m | 49.50 sq m | True | 2.6 m | Single | E | 5sq m | 5 sq m | |
| Nr. 77 | 1B2P | Apt_1B2P.1 | 50.40 sq m | 45 sq m | 49.50 sq m | True | 2.6 m | Single | W | 5sq m | 5 sq m | |
| Nr. 78 | 1B2P | Apt_1B2P.2 | 53.64 sq m | 45 sq m | 49.50 sq m | True | 2.6 m | Single | E | 5sq m | 5 sq m | UD Apartment |
| Nr. 79 | 1B2P | Apt_1B2P.1 | 50.40 sq m | 45 sq m | 49.50 sq m | True | 2.6 m | Single | W | 5sq m | 5 sq m | |
| Nr. 80 | 1B2P | Apt_1B2P.2 | 53.64 sq m | 45 sq m | 49.50 sq m | True | 2.6 m | Single | E | 5sq m | 5 sq m | UD Apartment |
| Nr. 81 | 1B2P | Apt_1B2P.2 | 53.64 sq m | 45 sq m | 49.50 sq m | True | 2.6 m | Single | W | 5sq m | 5 sq m | UD Apartment |
| Nr. 82 | 1B2P | Apt_1B2P.2 | 53.64 sq m | 45 sq m | 49.50 sq m | True | 2.6 m | Single | W | 5sq m | 5 sq m | UD Apartment |
| Nr. 83 | 2B3P | Apt_2B3P | 70.20 sq m | 63 sq m | 69.30 sq m | True | 2.6 m | Dual | S+W | 7sq m | 6 sq m | |
| Nr. 84 | 1B2P | Apt_1B2P.1 | 50.40 sq m | 45 sq m | 49.50 sq m | True | 2.6 m | Dual | S+E | 5sq m | 5 sq m | |
| Nr. 85 | 1B2P | Apt_1B2P.1 | 50.40 sq m | 45 sq m | 49.50 sq m | True | 2.6 m | Dual | N+S | 5sq m | 5 sq m | |
| Nr. 86 | 1B2P | Apt_1B2P.2 | 53.64 sq m | 45 sq m | 49.50 sq m | True | 2.6 m | Dual | N+S | 5sq m | 5 sq m | UD Apartment |
| Nr. 87 | 1B2P | Apt_1B2P.2 | 53.64 sq m | 45 sq m | 49.50 sq m | True | 2.6 m | Dual | N+S | 5sq m | 5 sq m | UD Apartment |
| Nr. 88 | 1B2P | Apt_1B2P.2 | 53.64 sq m | 45 sq m | 49.50 sq m | True | 2.6 m | Dual | N+S | 5sq m | 5 sq m | UD Apartment |
| Nr. 89 | 1B2P | Apt_1B2P.1 | 50.40 sq m | 45 sq m | 49.50 sq m | True | 2.6 m | Dual | N+S | 5sq m | 5 sq m | |
| Nr. 90 | 2B3P | Apt_2B3P | 70.20 sq m | 63 sq m | 69.30 sq m | True | 2.6 m | Dual | S+E | 7sq m | 6 sq m | |
| Nr. 91 | 1B2P | Apt_1B2P.2 | 53.64 sq m | 45 sq m | 49.50 sq m | True | 2.6 m | Dual | S+E | 5sq m | 5 sq m | UD Apartment |
| Nr. 92 | 1B2P | Apt_1B2P.1 | 50.40 sq m | 45 sq m | 49.50 sq m | True | 2.6 m | Single | W | 5sq m | 5 sq m | |
| Nr. 93 | 1B2P | Apt_1B2P.1 | 50.40 sq m | 45 sq m | 49.50 sq m | True | 2.6 m | Single | E | 5sq m | 5 sq m | |
| Nr. 94 | 1B2P | Apt_1B2P.1 | 50.40 sq m | 45 sq m | 49.50 sq m | True | 2.6 m | Single | W | 5sq m | 5 sq m | |
| Nr. 95 | 1B2P | Apt_1B2P.2 | 53.64 sq m | 45 sq m | 49.50 sq m | True | 2.6 m | Single | E | 5sq m | 5 sq m | UD Apartment |
| Nr. 96 | 1B2P | Apt_1B2P.1 | 50.40 sq m | 45 sq m | 49.50 sq m | True | 2.6 m | Single | W | 5sq m | 5 sq m | |
| Nr. 97 | 1B2P | Apt_1B2P.1 | 50.40 sq m | 45 sq m | 49.50 sq m | True | 2.6 m | Single | E | 5sq m | 5 sq m | |
| Nr. 98 | 1B2P | Apt_1B2P.2 | 53.64 sq m | 45 sq m | 49.50 sq m | True | 2.6 m | Dual | N+E | 5sq m | 5 sq m | UD Apartment |
| Nr. 99 | 2B3P | Apt_2B3P | 70.20 sq m | 63 sq m | 69.30 sq m | True | 2.6 m | Dual | N+E | 7sq m | 6 sq m | |
| Nr. 100 | 1B2P | Apt_1B2P.4 | 50.40 sq m | 45 sq m | 49.50 sq m | True | 2.6 m | Dual | N+S | 5sq m | 5 sq m | |
| Nr. 101 | 1B2P | Apt_1B2P.4 | 50.40 sq m | 45 sq m | 49.50 sq m | True | 2.6 m | Dual | N+S | 5sq m | 5 sq m | |
| Nr. 102 | 1B2P | Apt_1B2P.4 | 50.40 sq m | 45 sq m | 49.50 sq m | True | 2.6 m | Dual | N+S | 5sq m | 5 sq m | |
| Nr. 103 | 1B2P | Apt_1B2P.4 | 50.40 sq m | 45 sq m | 49.50 sq m | True | 2.6 m | Dual | N+S | 5sq m | 5 sq m | |
| Total Net: | | | 1724.40 sq m | | | | | | | | | |

| Level +4 | | | | | | | | | | | | |
|------------|------|------------|-------------|---------|------------|------|-------|--------|-----|-------|--------|--------------|
| Nr. 104 | 1B2P | Apt_1B2P.2 | 53.64 sq m | 45 sq m | 49.50 sq m | True | 2.6 m | Dual | N+W | 5sq m | 5 sq m | UD Apartment |
| Nr. 105 | 1B2P | Apt_1B2P.2 | 53.64 sq m | 45 sq m | 49.50 sq m | True | 2.6 m | Single | W | 5sq m | 5 sq m | UD Apartment |
| Nr. 106 | 2B3P | Apt_2B3P | 70.20 sq m | 63 sq m | 69.30 sq m | True | 2.6 m | Dual | S+W | 7sq m | 6 sq m | |
| Nr. 107 | 1B2P | Apt_1B2P.1 | 50.40 sq m | 45 sq m | 49.50 sq m | True | 2.6 m | Dual | S+E | 5sq m | 5 sq m | |
| Total Net: | | | 227.88 sq m | | | | | | | | | |

| Total Net Area for purposes of Community, Arts and Culture Area calculation: | | 5753.88 sq m |
|--|------|--------------|
| Overall Unit Numbers | | |
| 1B2P | 94 | |
| 2B3P | 13 | |
| Overall Apartment Total | 107 | |
| UD Apartment Total | 32 | |
| UD Apartment Total Percentage | 30% | |
| Overall Single/Dual Aspect Count | | |
| Total Single Aspect count | 53 | |
| Total Dual Aspect count | 54 | |
| Total Single Aspect Percentage | 50% | |
| Total Dual Aspect Percentage | 50% | |
| Overall +10% Count | | |
| Total < +10% count | 107 | |
| Total >= +10% count | 0 | |
| Total < +10% percentage | 100% | |
| Total >= +10% percentage | 0% | |

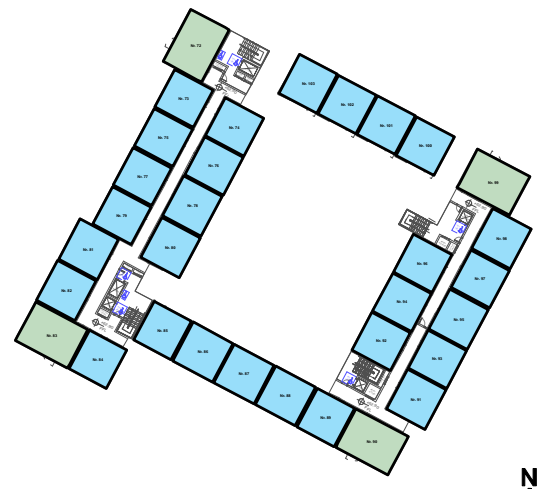
Notes
This Schedule includes all location specific HOA statistics for each apartment, as per the column headings above.
For a full breakdown of all apartment type HOA statistics, please refer to separate apartment type layouts and schedules in this report

Housing Quality Assessment

Legend

1B2P

2B3P



3 Key Plan - Proposed +3 Level Plan



4 Key Plan - Proposed +4 Level Plan

Schedule of Houses: Cherry Orchard Road, Ballyfermot

| Unit Number | Unit Type | 1B/2B/3B/4B | Floor Area Achieved sq m | Min. Target Area sq m | 10% GFA | 10% > Floor Area | Ceiling Height | Aspect | Orientation | Private Outdoor Space | Min. Private Outdoor Space | Additional features |
|-------------|----------------------|-------------|--------------------------|-----------------------|---------|------------------|----------------|--------|-------------|-----------------------|----------------------------|---------------------|
| Level +0 | | | | | | | | | | | | |
| Nr. 108 | HSE-3B5P-CRD Type Ca | 3B5P | 104.811 sq m sq m | 100 sq m | N/A | N/A | 2.7 m | Dual | N+W+E | 52.662sq m | 50 sq m | UD Dwelling |
| Nr. 109 | HSE-3B5P-CRD Type B | 3B5P | 101.648 sq m sq m | 100 sq m | N/A | N/A | 2.7 m | Dual | W+E | 60.6sq m | 50 sq m | |
| Nr. 110 | Hse-2B4P-CRD Type A | 2B4P | 87.412 sq m sq m | 85 sq m | N/A | N/A | 2.7 m | Dual | W+E | 54.384sq m | 40 sq m | |
| Nr. 111 | Hse-2B4P-CRD Type A | 2B4P | 87.412 sq m sq m | 85 sq m | N/A | N/A | 2.7 m | Dual | W+E | 54.384sq m | 40 sq m | |
| Nr. 112 | HSE-3B5P-CRD Type B | 3B5P | 101.648 sq m sq m | 100 sq m | N/A | N/A | 2.7 m | Dual | W+E | 57.469sq m | 50 sq m | |
| Nr. 113 | HSE-3B5P-CRD Type Ca | 3B5P | 104.811 sq m sq m | 100 sq m | N/A | N/A | 2.7 m | Dual | W+E | 52.267sq m | 50 sq m | UD Dwelling |
| Nr. 114 | HSE-3B5P-CRD Type D | 3B5P | 101.648 sq m sq m | 100 sq m | N/A | N/A | 2.7 m | Dual | N+S | 88.958sq m | 50 sq m | |
| Nr. 115 | Hse-2B4P-CRD Type A | 2B4P | 87.412 sq m sq m | 85 sq m | N/A | N/A | 2.7 m | Dual | N+S | 65.147sq m | 40 sq m | |
| Nr. 116 | HSE-3B5P-CRD Type D | 3B5P | 101.648 sq m sq m | 100 sq m | N/A | N/A | 2.7 m | Dual | N+S | 94.444sq m | 50 sq m | |
| Nr. 117 | HSE-3B5P-CRD Type Ca | 3B5P | 104.811 sq m sq m | 100 sq m | N/A | N/A | 2.7 m | Dual | S+W+E | 55.068sq m | 50 sq m | UD Dwelling |
| Nr. 118 | HSE-3B5P-CRD Type B | 3B5P | 101.648 sq m sq m | 100 sq m | N/A | N/A | 2.7 m | Dual | W+E | 63.125sq m | 50 sq m | |
| Nr. 119 | Hse-2B4P-CRD Type A | 2B4P | 87.412 sq m sq m | 85 sq m | N/A | N/A | 2.7 m | Dual | W+E | 56.65sq m | 40 sq m | |
| Nr. 120 | HSE-3B5P-CRD Type B | 3B5P | 101.648 sq m sq m | 100 sq m | N/A | N/A | 2.7 m | Dual | W+E | 63.125sq m | 50 sq m | |
| Nr. 121 | HSE-3B5P-CRD Type Ca | 3B5P | 104.811 sq m sq m | 100 sq m | N/A | N/A | 2.7 m | Dual | N+W+E | 57.536sq m | 50 sq m | UD Dwelling |
| Nr. 122 | HSE-3B5P-CRD Type C | 3B5P | 104.811 sq m sq m | 100 sq m | N/A | N/A | 2.7 m | Dual | N+S | 92.745sq m | 50 sq m | UD Dwelling |
| Nr. 123 | HSE-3B5P-CRD Type C | 3B5P | 104.811 sq m sq m | 100 sq m | N/A | N/A | 2.7 m | Dual | N+S | 100.785sq m | 50 sq m | UD Dwelling |
| Nr. 124 | Hse-2B4P-CRD Type A | 2B4P | 87.412 sq m sq m | 85 sq m | N/A | N/A | 2.7 m | Dual | W+E | 55.365sq m | 40 sq m | |
| Nr. 125 | Hse-2B4P-CRD Type A | 2B4P | 87.412 sq m sq m | 85 sq m | N/A | N/A | 2.7 m | Dual | W+E | 48.691sq m | 40 sq m | |
| Nr. 126 | Hse-2B4P-CRD Type A | 2B4P | 87.412 sq m sq m | 85 sq m | N/A | N/A | 2.7 m | Dual | W+E | 51.992sq m | 40 sq m | |
| Nr. 127 | HSE-3B5P-CRD Type Ca | 3B5P | 104.811 sq m sq m | 100 sq m | N/A | N/A | 2.7 m | Dual | N+W+E | 49.243sq m | 50 sq m | UD Dwelling |
| Nr. 128 | HSE-3B5P-CRD Type D | 3B5P | 107.753 sq m sq m | 100 sq m | N/A | N/A | 2.7 m | Dual | N+S | 78.997sq m | 50 sq m | |
| Nr. 129 | HSE-3B5P-CRD Type B | 3B5P | 107.753 sq m sq m | 100 sq m | N/A | N/A | 2.7 m | Dual | N+S | 66.482sq m | 50 sq m | |
| Nr. 130 | HSE-3B5P-CRD Type B | 3B5P | 107.753 sq m sq m | 100 sq m | N/A | N/A | 2.7 m | Dual | N+S | 62.668sq m | 50 sq m | |
| Nr. 131 | HSE-3B5P-CRD Type D | 3B5P | 107.753 sq m sq m | 100 sq m | N/A | N/A | 2.7 m | Dual | N+S | 96.114sq m | 50 sq m | |
| Nr. 132 | HSE-3B5P-CRD Type D | 3B5P | 107.753 sq m sq m | 100 sq m | N/A | N/A | 2.7 m | Dual | N+S | 101.812sq m | 50 sq m | |
| Nr. 133 | HSE-3B5P-CRD Type B | 3B5P | 107.753 sq m sq m | 100 sq m | N/A | N/A | 2.7 m | Dual | N+S | 57.144sq m | 50 sq m | |
| Nr. 134 | HSE-3B5P-CRD Type Ca | 3B5P | 104.811 sq m sq m | 100 sq m | N/A | N/A | 2.7 m | Dual | N+S+W | 50.532sq m | 50 sq m | UD Dwelling |
| Nr. 135 | HSE-3B5P-CRD Type D | 3B5P | 107.753 sq m sq m | 100 sq m | N/A | N/A | 2.7 m | Dual | W+E | 76.913sq m | 50 sq m | |
| Nr. 136 | Hse-2B4P-CRD Type A | 2B4P | 87.412 sq m sq m | 85 sq m | N/A | N/A | 2.7 m | Dual | W+E | 55.66sq m | 40 sq m | |
| Nr. 137 | Hse-2B4P-CRD Type A | 2B4P | 87.412 sq m sq m | 85 sq m | N/A | N/A | 2.7 m | Dual | W+E | 66.663sq m | 40 sq m | |
| Nr. 138 | HSE-3B5P-CRD Type D | 3B5P | 107.753 sq m sq m | 100 sq m | N/A | N/A | 2.7 m | Dual | W+E | 76.923sq m | 50 sq m | |
| Nr. 139 | HSE-3B5P-CRD Type D | 3B5P | 107.753 sq m sq m | 100 sq m | N/A | N/A | 2.7 m | Dual | W+E | 114.793sq m | 50 sq m | |
| Nr. 140 | HSE-3B5P-CRD Type B | 3B5P | 107.753 sq m sq m | 100 sq m | N/A | N/A | 2.7 m | Dual | W+E | 92.975sq m | 50 sq m | |
| Nr. 141 | HSE-3B5P-CRD Type B | 3B5P | 107.753 sq m sq m | 100 sq m | N/A | N/A | 2.7 m | Dual | W+E | 92.975sq m | 50 sq m | |
| Nr. 142 | HSE-3B5P-CRD Type D | 3B5P | 107.753 sq m sq m | 100 sq m | N/A | N/A | 2.7 m | Dual | W+E | 98.838sq m | 50 sq m | |
| Nr. 143 | Hse-2B4P-CRD Type A | 2B4P | 87.412 sq m sq m | 85 sq m | N/A | N/A | 2.7 m | Dual | W+E | 69.528sq m | 40 sq m | |
| Nr. 144 | Hse-2B4P-CRD Type A | 2B4P | 87.412 sq m sq m | 85 sq m | N/A | N/A | 2.7 m | Dual | W+E | 53.534sq m | 40 sq m | |
| Nr. 145 | HSE-3B5P-CRD Type Ca | 3B5P | 104.811 sq m sq m | 100 sq m | N/A | N/A | 2.7 m | Dual | S+W+E | 56.05sq m | 50 sq m | UD Dwelling |
| Nr. 146 | HSE-3B5P-CRD Type D | 3B5P | 107.753 sq m sq m | 100 sq m | N/A | N/A | 2.7 m | Dual | N+S | 113.602sq m | 50 sq m | |
| Nr. 147 | HSE-3B5P-CRD Type B | 3B5P | 107.753 sq m sq m | 100 sq m | N/A | N/A | 2.7 m | Dual | N+S | 86.064sq m | 50 sq m | |
| Nr. 148 | HSE-3B5P-CRD Type B | 3B5P | 107.753 sq m sq m | 100 sq m | N/A | N/A | 2.7 m | Dual | N+S | 86.064sq m | 50 sq m | |
| Nr. 149 | HSE-3B5P-CRD Type D | 3B5P | 107.753 sq m sq m | 100 sq m | N/A | N/A | 2.7 m | Dual | N+S | 108.405sq m | 50 sq m | |
| Nr. 150 | HSE-3B5P-CRD Type D | 3B5P | 107.753 sq m sq m | 100 sq m | N/A | N/A | 2.7 m | Dual | N+S | 73.913sq m | 50 sq m | |
| Nr. 151 | Hse-2B4P-CRD Type A | 2B4P | 87.412 sq m sq m | 85 sq m | N/A | N/A | 2.7 m | Dual | N+S | 50.985sq m | 40 sq m | |
| Nr. 152 | Hse-2B4P-CRD Type A | 2B4P | 87.412 sq m sq m | 85 sq m | N/A | N/A | 2.7 m | Dual | N+S | 50.985sq m | 40 sq m | |
| Nr. 153 | HSE-3B5P-CRD Type Ca | 3B5P | 104.811 sq m sq m | 100 sq m | N/A | N/A | 2.7 m | Dual | N+S+E | 51.045sq m | 50 sq m | UD Dwelling |
| Nr. 154 | HSE-3B5P-CRD Type Ca | 3B5P | 104.811 sq m sq m | 100 sq m | N/A | N/A | 2.7 m | Dual | N+W+E | 52.469sq m | 50 sq m | UD Dwelling |
| Nr. 155 | HSE-3B5P-CRD Type B | 3B5P | 107.753 sq m sq m | 100 sq m | N/A | N/A | 2.7 m | Dual | W+E | 61.664sq m | 50 sq m | |
| Nr. 156 | HSE-3B5P-CRD Type B | 3B5P | 107.753 sq m sq m | 100 sq m | N/A | N/A | 2.7 m | Dual | W+E | 78.24sq m | 50 sq m | |
| Nr. 157 | HSE-3B5P-CRD Type B | 3B5P | 107.753 sq m sq m | 100 sq m | N/A | N/A | 2.7 m | Dual | W+E | 76.566sq m | 50 sq m | |
| Nr. 158 | HSE-3B5P-CRD Type B | 3B5P | 107.753 sq m sq m | 100 sq m | N/A | N/A | 2.7 m | Dual | W+E | 61.664sq m | 50 sq m | |
| Nr. 159 | HSE-3B5P-CRD Type Ca | 3B5P | 104.811 sq m sq m | 100 sq m | N/A | N/A | 2.7 m | Dual | S+W+E | 53.313sq m | 50 sq m | UD Dwelling |
| Nr. 160 | HSE-3B5P-CRD Type D | 3B5P | 107.753 sq m sq m | 100 sq m | N/A | N/A | 2.7 m | Dual | N+S | 78.976sq m | 50 sq m | |
| Nr. 161 | HSE-3B5P-CRD Type B | 3B5P | 107.753 sq m sq m | 100 sq m | N/A | N/A | 2.7 m | Dual | N+S | 81.5sq m | 50 sq m | |
| Nr. 162 | HSE-3B5P-CRD Type B | 3B5P | 107.753 sq m sq m | 100 sq m | N/A | N/A | 2.7 m | Dual | N+S | 81.5sq m | 50 sq m | |
| Nr. 163 | HSE-3B5P-CRD Type D | 3B5P | 107.753 sq m sq m | 100 sq m | N/A | N/A | 2.7 m | Dual | N+S | 92.063sq m | 50 sq m | |
| Nr. 164 | HSE-3B5P-CRD Type Ca | 3B5P | 104.811 sq m sq m | 100 sq m | N/A | N/A | 2.7 m | Dual | S+W+E | 53.313sq m | 50 sq m | UD Dwelling |
| Nr. 165 | HSE-3B5P-CRD Type B | 3B5P | 107.753 sq m sq m | 100 sq m | N/A | N/A | 2.7 m | Dual | W+E | 61.664sq m | 50 sq m | |
| Nr. 166 | HSE-3B5P-CRD Type B | 3B5P | 107.753 sq m sq m | 100 sq m | N/A | N/A | 2.7 m | Dual | W+E | 71.72sq m | 50 sq m | |
| Nr. 167 | HSE-3B5P-CRD Type B | 3B5P | 107.753 sq m sq m | 100 sq m | N/A | N/A | 2.7 m | Dual | W+E | 71.72sq m | 50 sq m | |
| Nr. 168 | HSE-3B5P-CRD Type B | 3B5P | 107.753 sq m sq m | 100 sq m | N/A | N/A | 2.7 m | Dual | W+E | 61.664sq m | 50 sq m | |
| Nr. 169 | HSE-3B5P-CRD Type Ca | 3B5P | 104.811 sq m sq m | 100 sq m | N/A | N/A | 2.7 m | Dual | W+E | 53.313sq m | 50 sq m | UD Dwelling |
| Nr. 170 | HSE-3B5P-CRD Type C | 3B5P | 104.811 sq m sq m | 100 sq m | N/A | N/A | 2.7 m | Dual | N+S | 112.248sq m | 50 sq m | UD Dwelling |
| Nr. 171 | HSE-3B5P-CRD Type C | 3B5P | 104.811 sq m sq m | 100 sq m | N/A | N/A | 2.7 m | Dual | N+S | 113.97sq m | 50 sq m | UD Dwelling |
| Total Net: | | | 64.00 sq m | | | | | | | | | |

| Overall Unit Numbers | |
|----------------------------------|-----------|
| 2B4P | 13 |
| 3B5P | 51 |
| Overall House Total | 64 |
| Overall Single/Dual Aspect Count | |
| Total Dual Aspect count | 64 |
| Total Single Aspect Percentage | 0% |
| Total Dual Aspect Percentage | 100% |
| Overall +10% Count | |
| Total < +10% count | N/A |
| Total >= +10% count | N/A |
| Total < +10% percentage | N/A |
| Total >= +10% percentage | N/A |

Notes
This Schedule includes all location specific HQA statistics for each apartment, as per the column headings above.
For a full breakdown of all apartment type HQA statistics, please refer to separate apartment type layouts and schedules in this report

Housing Quality Assessment

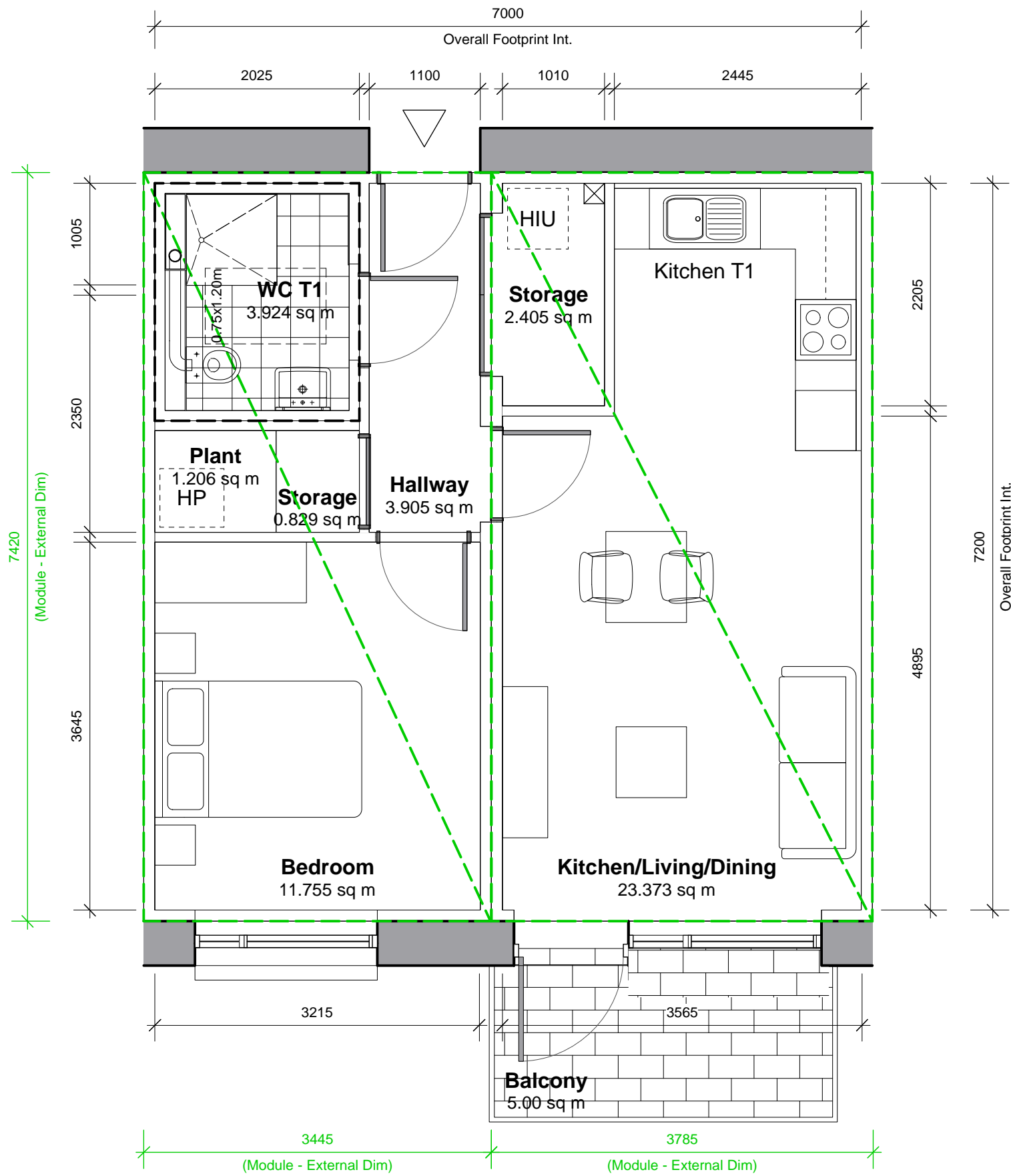
Legend

2B4P

3B5P



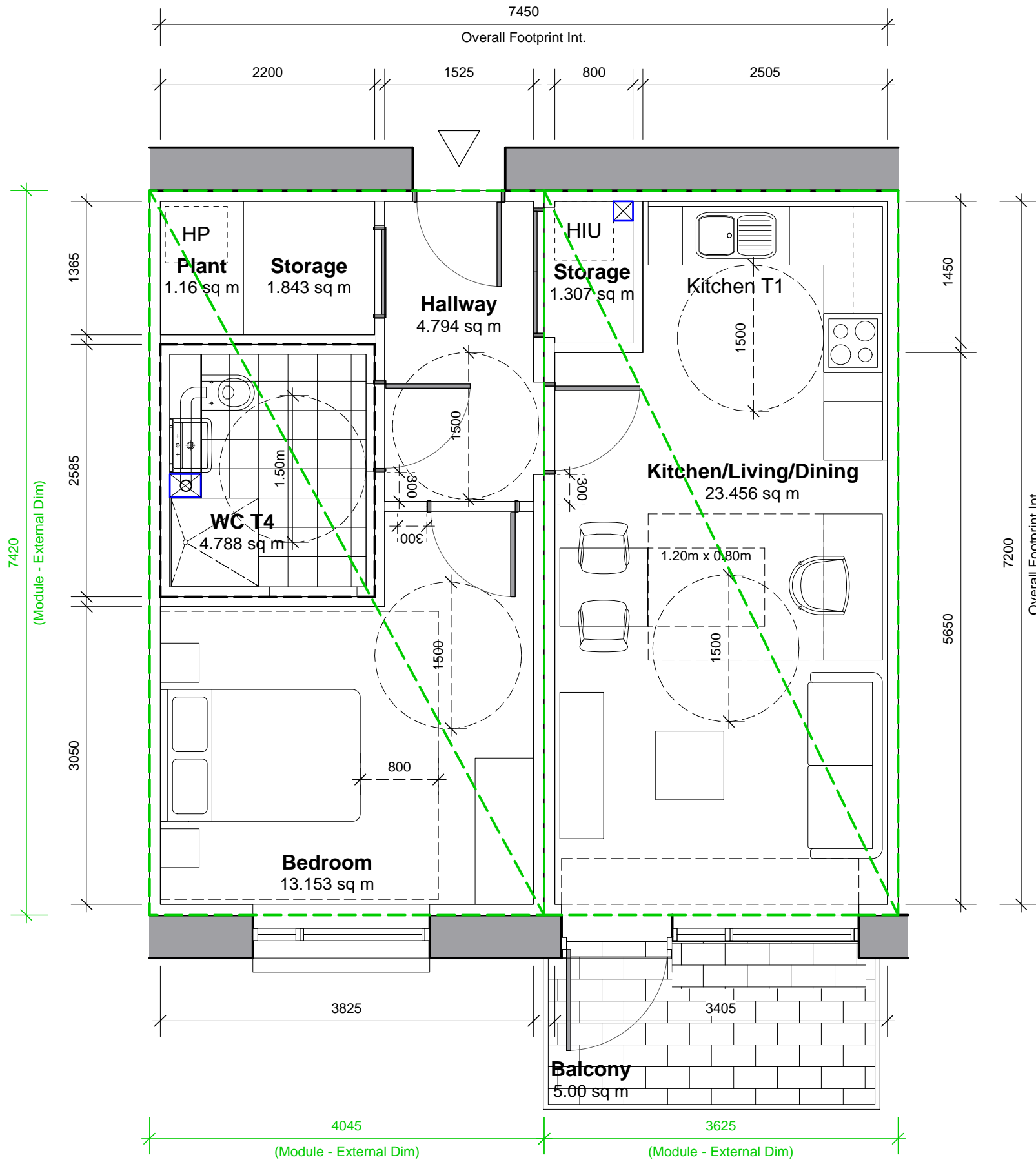
1 Key Plan - Proposed Site Plan



1B2P-1 Standard

| RELEVANT AREA | PROPOSED UNIT | | EQUIVALENT DEPT GUIDELINES | | COMPARISON OF FLOOR AREA % |
|----------------------------------|---------------|-------------------|----------------------------|----------------------|----------------------------|
| | ACTUAL WIDTH | ACTUAL AREA (SqM) | MIN WIDTH | MIN FLOOR AREA (SqM) | |
| BEDROOM 1 | 3.215 | 11.8 | 2.800 | 11.4 | 103.16% |
| AGGREGATE BEDROOM AREA | | 11.8 | | 11.4 | 103.16% |
| AGGREGATE STORAGE AREA | | 3.2 | | 3.0 | 106.67% |
| TOTAL LIVING/KITCHEN/DINING AREA | | 23.4 | | 23.0 | 101.61% |
| GROSS INTERNAL AREA | 46.5* | 50.4 | | 45.0 | 103.33%* |
| PRIVATE OPEN SPACE (P.O.S.) | | 5.0 | | 5.0 | 100.00% |

*less circulation/hallways



1B2P-2 UD-Typical

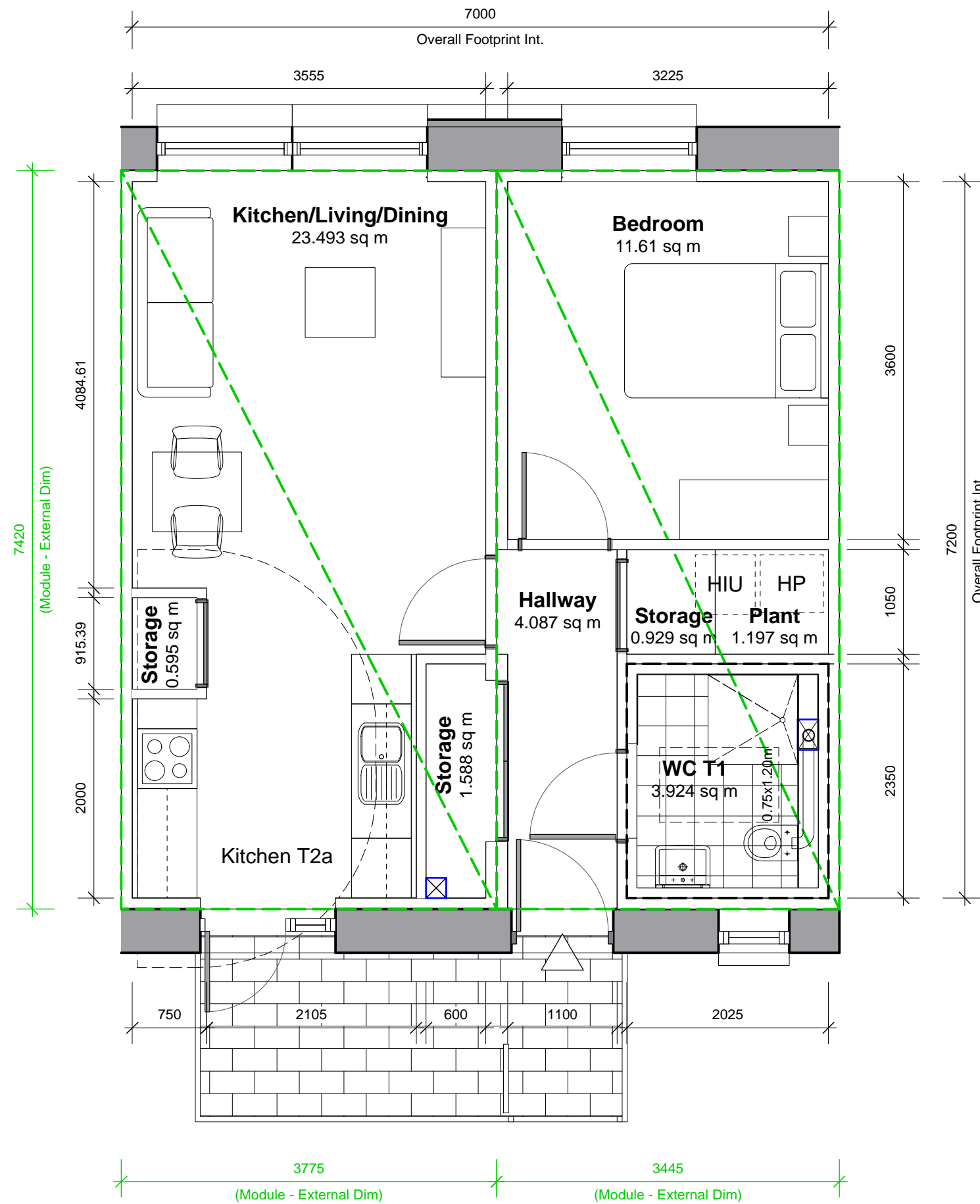
| RELEVANT AREA | PROPOSED UNIT | | EQUIVALENT DEPT GUIDELINES | | COMPARISON OF FLOOR AREA % |
|----------------------------------|---------------|-------------------|----------------------------|----------------------|----------------------------|
| | ACTUAL WIDTH | ACTUAL AREA (SqM) | MIN WIDTH | MIN FLOOR AREA (SqM) | |
| BEDROOM 1 | 3.825 | 13.2 | 2.800 | 11.4 | 115.35% |
| AGGREGATE BEDROOM AREA | | 13.2 | | 11.4 | 115.35% |
| AGGREGATE STORAGE AREA | | 3.2 | | 3.0 | 106.67% |
| TOTAL LIVING/KITCHEN/DINING AREA | | 23.5 | | 23.0 | 102.00% |
| GROSS INTERNAL AREA | 48.85* | 53.6 | | 45.0 | 108.56%* |
| PRIVATE OPEN SPACE (P.O.S.) | | 5.0 | | 5.0 | 100.00% |

*less circulation/hallways

1B2P-4 Balcony Entry

| RELEVANT AREA | PROPOSED UNIT | | EQUIVALENT DEPT GUIDELINES | | COMPARISON OF FLOOR AREA % |
|----------------------------------|---------------|-------------------|----------------------------|----------------------|----------------------------|
| | ACTUAL WIDTH | ACTUAL AREA (SqM) | MIN WIDTH | MIN FLOOR AREA (SqM) | |
| BEDROOM 1 | 3.060 | 11.6 | 2.800 | 11.4 | 101.75% |
| AGGREGATE BEDROOM AREA | | 11.6 | | 11.4 | 101.75% |
| AGGREGATE STORAGE AREA | | 3.1 | | 3.0 | 104.00% |
| TOTAL LIVING/KITCHEN/DINING AREA | | 23.5 | | 23.0 | 102.13% |
| GROSS INTERNAL AREA | 46.31* | 50.4 | | 45.0 | 103.96%* |
| PRIVATE OPEN SPACE (P.O.S.) | | 5.0 | | 5.0 | 100.00% |

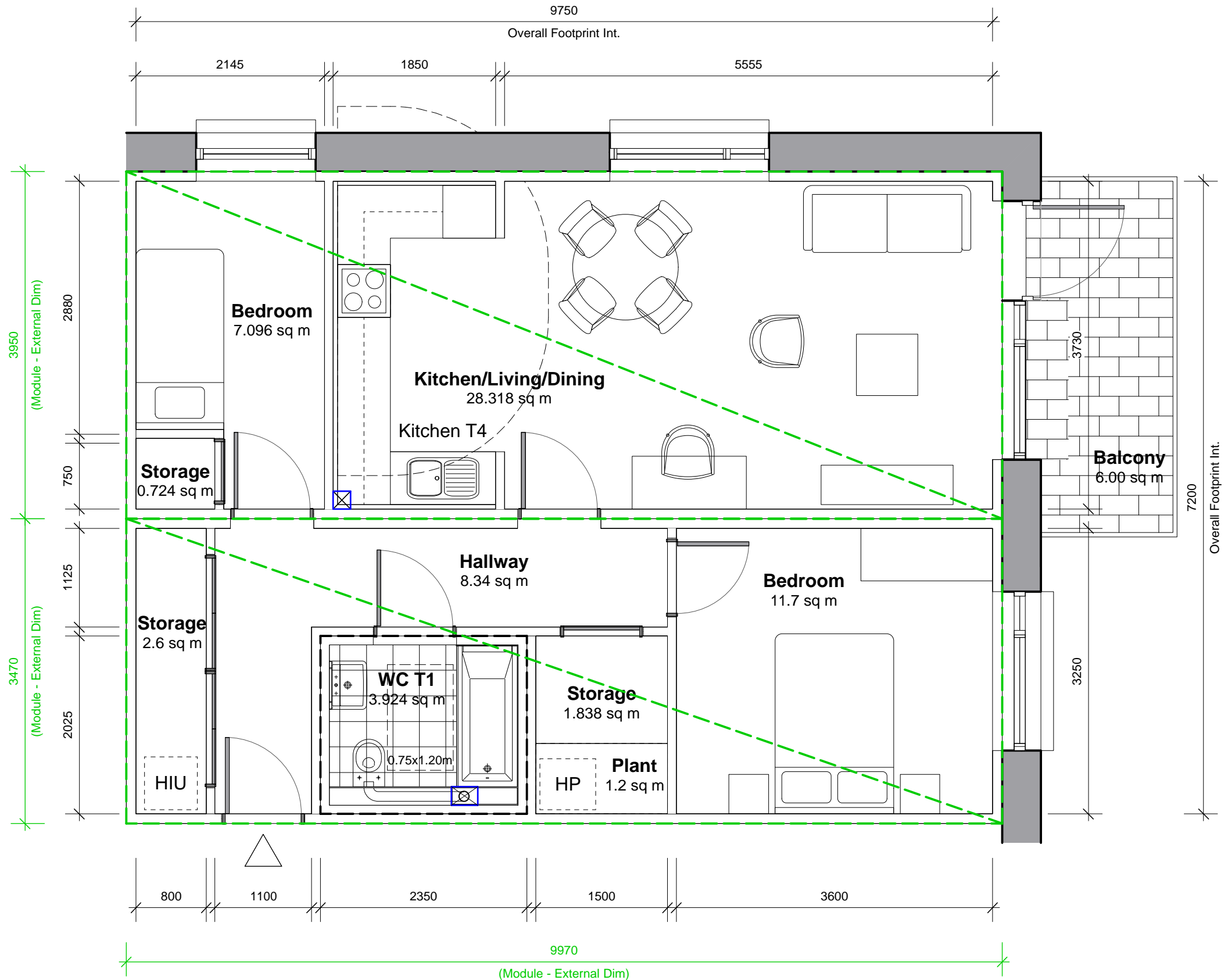
*less circulation/hallways



2B3P-1 Standard

| RELEVANT AREA | PROPOSED UNIT | | EQUIVALENT DEPT GUIDELINES | | COMPARISON OF FLOOR AREA % |
|----------------------------------|---------------|-------------------|----------------------------|----------------------|----------------------------|
| | ACTUAL WIDTH | ACTUAL AREA (sqM) | MIN WIDTH | MIN FLOOR AREA (sqM) | |
| BEDROOM 1 | 3.225 | 11.7 | 2.800 | 11.4 | 102.63% |
| BEDROOM 2 | 2.145 | 7.1 | 2.100 | 7.1 | 100.00% |
| AGGREGATE BEDROOM AREA | | 18.8 | | 18.5 | 101.62% |
| AGGREGATE STORAGE AREA | | 5.2 | | 5.0 | 103.20% |
| TOTAL LIVING/KITCHEN/DINING AREA | | 28.3 | | 28.0 | 101.14% |
| GROSS INTERNAL AREA | 61.86* | 70.2 | | 63.0 | 98.19%* |
| PRIVATE OPEN SPACE (P.O.S.) | | 6.0 | | 6.0 | 100.00% |

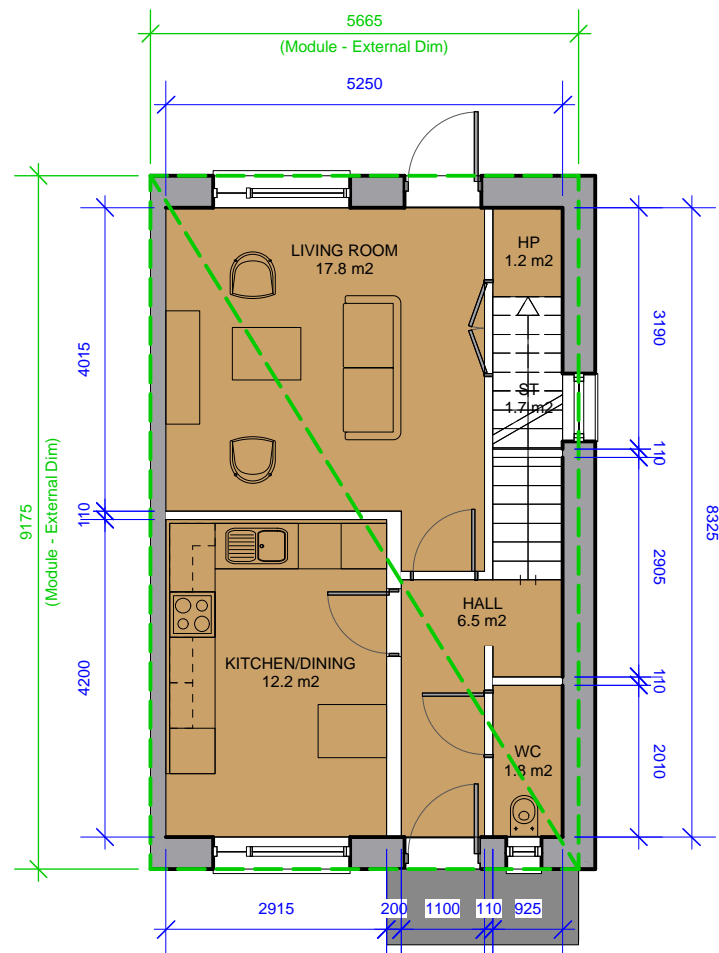
*less circulation/hallways



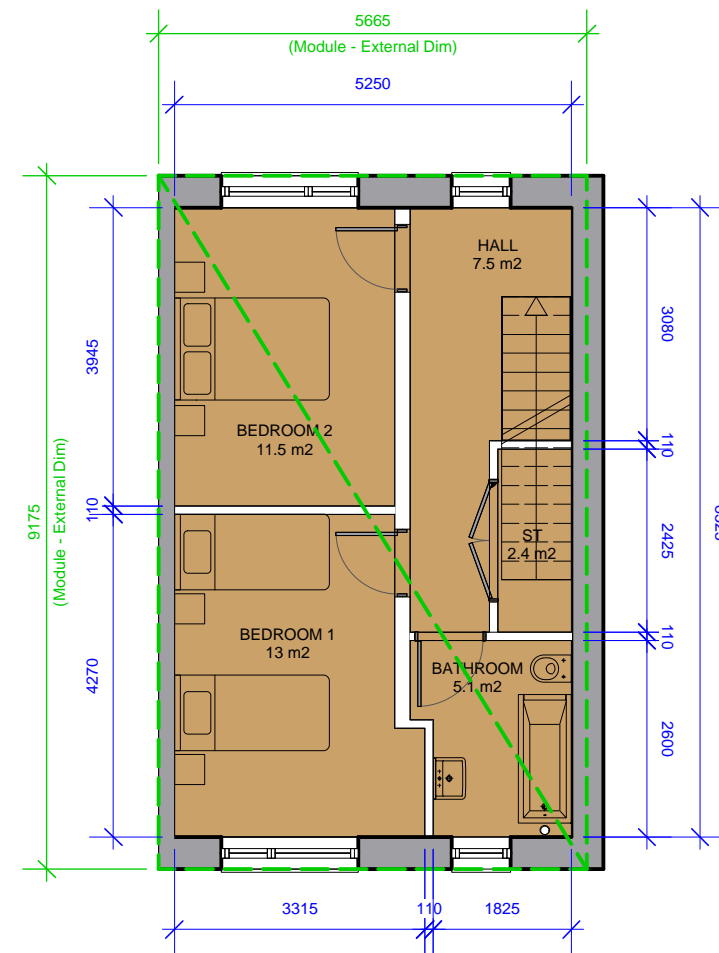
HSE_2B4P_CRD_TYPE A

| RELEVANT AREA | PROPOSED UNIT | | EQUIVALENT DEPT GUIDELINES | | COMPARISON OF FLOOR AREA % |
|----------------------------------|---------------|-------------------|----------------------------|----------------------|----------------------------|
| | ACTUAL WIDTH | ACTUAL AREA (SqM) | MIN WIDTH | MIN FLOOR AREA (SqM) | |
| BEDROOM 1 | 2.915 | 13.0 | 2.800 | 13 | 100.00% |
| BEDROOM 2 | 2.915 | 11.5 | 2.800 | 11.4 | 100.88% |
| AGGREGATE BEDROOM AREA | | 24.5 | | 24.4 | 100.41% |
| AGGREGATE STORAGE AREA | | 7.5 | | 6.0 | 125.00% |
| TOTAL LIVING/KITCHEN/DINING AREA | | 30.0 | | 30.0 | 100.00% |
| GROSS INTERNAL AREA | 71.6* | 87.4 | | 85.0 | 84.2%* |
| PRIVATE OPEN SPACE (P.O.S.) | | refer to HQA | | 60.0 | N/A |

*less circulation/hallways



1 Ground Floor Plan
Scale: 1:100

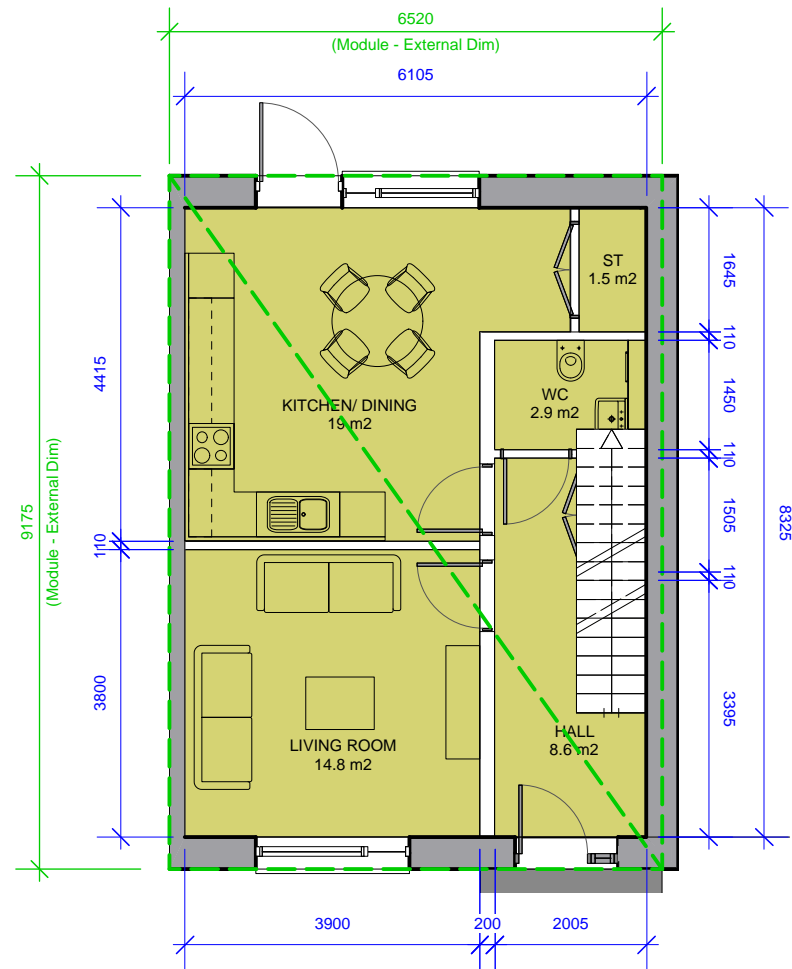


2 First Floor Plan
Scale: 1:100

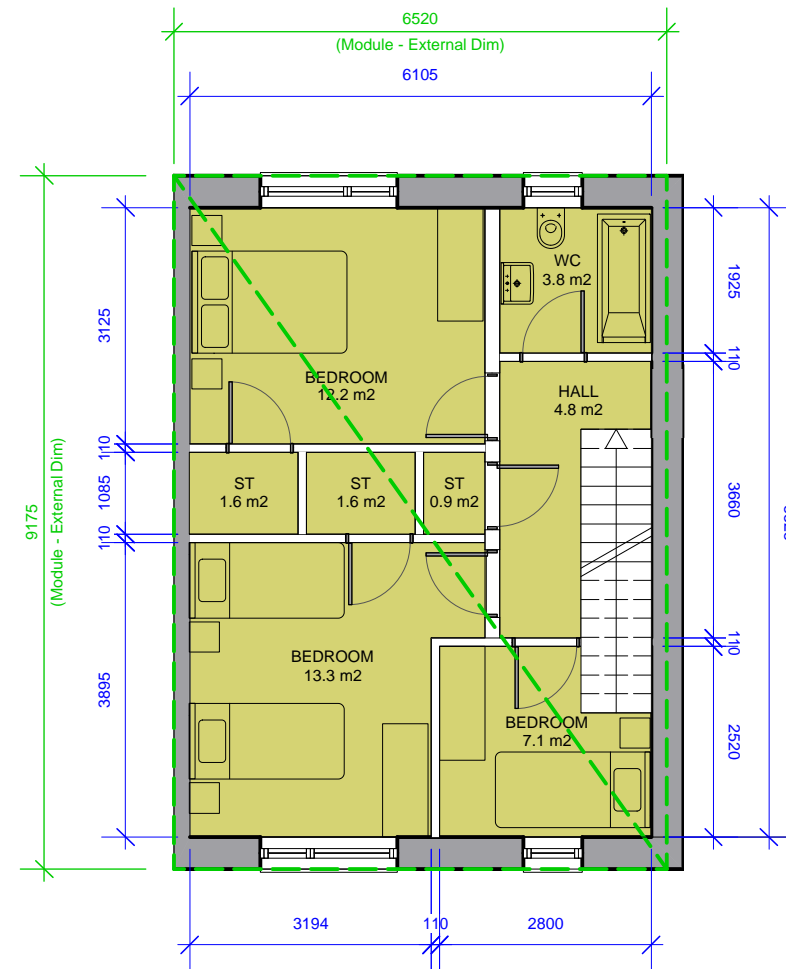
HSE_3B5P_CRD_TYPE B

| RELEVANT AREA | PROPOSED UNIT | | EQUIVALENT DEPT GUIDELINES | | COMPARISON OF FLOOR AREA % |
|---|---------------|-------------------|----------------------------|----------------------|----------------------------|
| | ACTUAL WIDTH | ACTUAL AREA (SqM) | MIN WIDTH | MIN FLOOR AREA (SqM) | |
| BEDROOM 1 | 3.190 | 13.3 | 2.800 | 13 | 102.31% |
| BEDROOM 2 | 3.125 | 12.2 | 2.800 | 11.4 | 107.02% |
| BEDROOM 3 | 2.800 | 7.1 | 2.100 | 7.1 | 100.00% |
| AGGREGATE BEDROOM AREA | | 32.6 | | 31.5 | 103.49% |
| AGGREGATE STORAGE AREA | | 9.1 | | 9.0 | 101.11% |
| TOTAL LIVING/KITCHEN/DINING AREA | | 34.0 | | 34.0 | 100.00% |
| GROSS INTERNAL AREA | 85.7* | 101.6 | | 100.0 | 85.7%* |
| PRIVATE OPEN SPACE (P.O.S.) | | refer HQA | | 80.0 | N/A |

*less circulation/hallways



1 Ground Floor Plan
Scale: 1:100



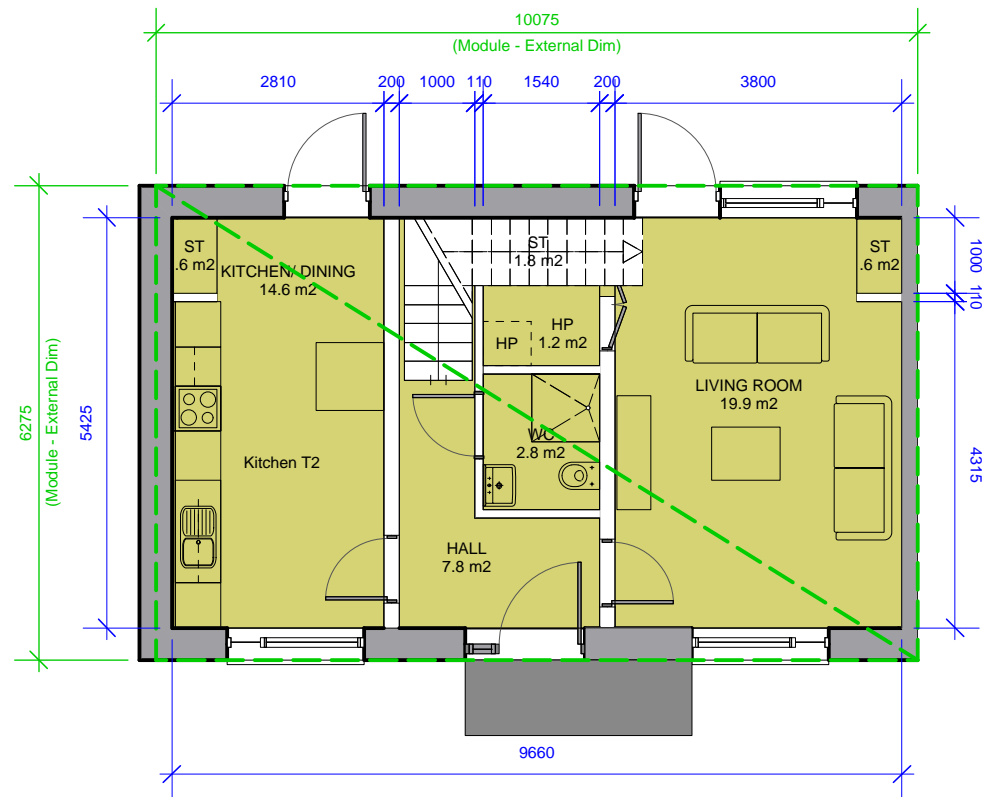
2 First Floor Plan
Scale: 1:100

HSE_3B5P_CRD_TYPE C

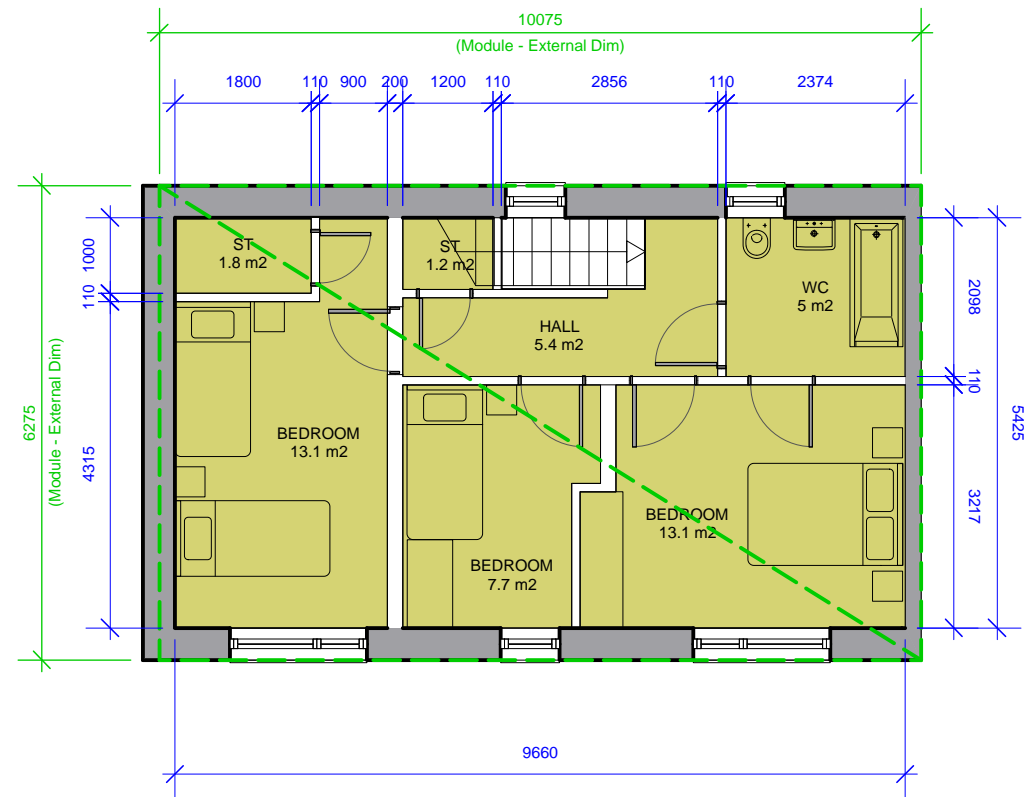
| RELEVANT AREA | PROPOSED UNIT | | EQUIVALENT DEPT GUIDELINES | | COMPARISON OF FLOOR AREA % |
|---------------|---------------|-------------------|----------------------------|----------------------|----------------------------|
| | ACTUAL WIDTH | ACTUAL AREA (SqM) | MIN WIDTH | MIN FLOOR AREA (SqM) | |
| BEDROOM 1 | 3.215 | 13.1 | 2.800 | 13 | 100.77% |
| BEDROOM 2 | 2.810 | 13.5 | 2.800 | 11.4 | 118.42% |
| BEDROOM 3 | 2.240 | 7.7 | 2.100 | 7.1 | 108.45% |

| | | | | | |
|----------------------------------|-------|--------------|--|-------|---------|
| AGGREGATE BEDROOM AREA | | 34.3 | | 31.5 | 108.89% |
| AGGREGATE STORAGE AREA | | 9.0 | | 9.0 | 100.00% |
| TOTAL LIVING/KITCHEN/DINING AREA | | 35.2 | | 34.0 | 103.53% |
| GROSS INTERNAL AREA | 90.0* | 104.8 | | 100.0 | 90%* |
| PRIVATE OPEN SPACE (P.O.S.) | | refer to HQA | | 80.0 | N/A |

*less circulation/hallways



1 Ground Floor Plan
Scale: 1:100



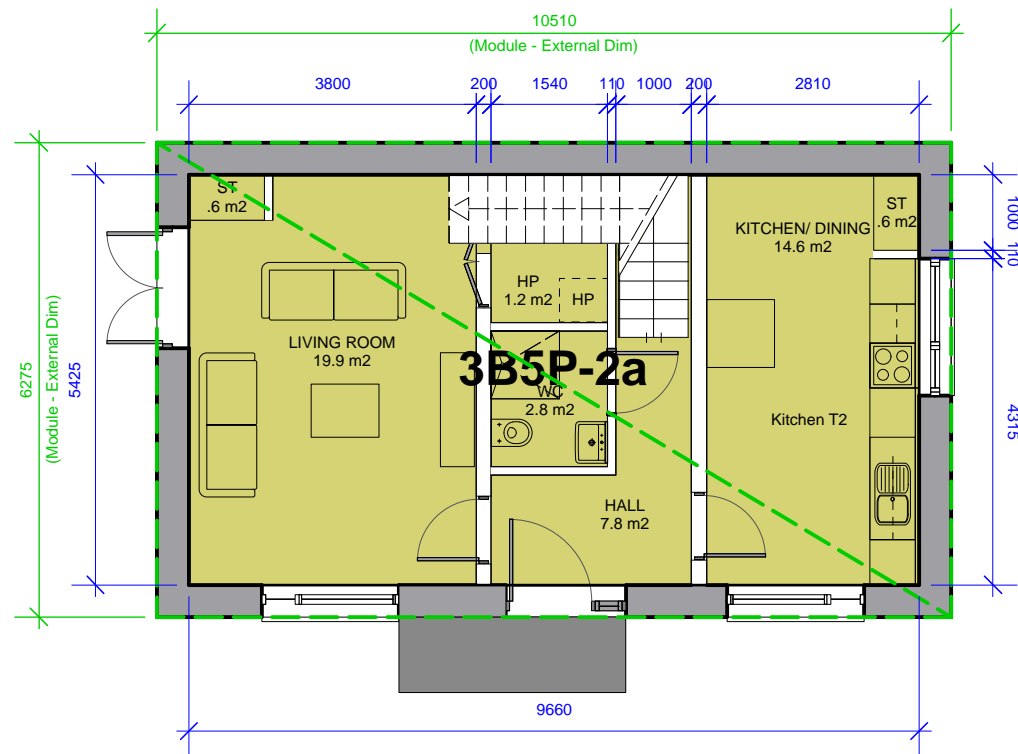
2 First Floor Plan
Scale: 1:100

HSE_3B5P_CRD_TYPE Ca

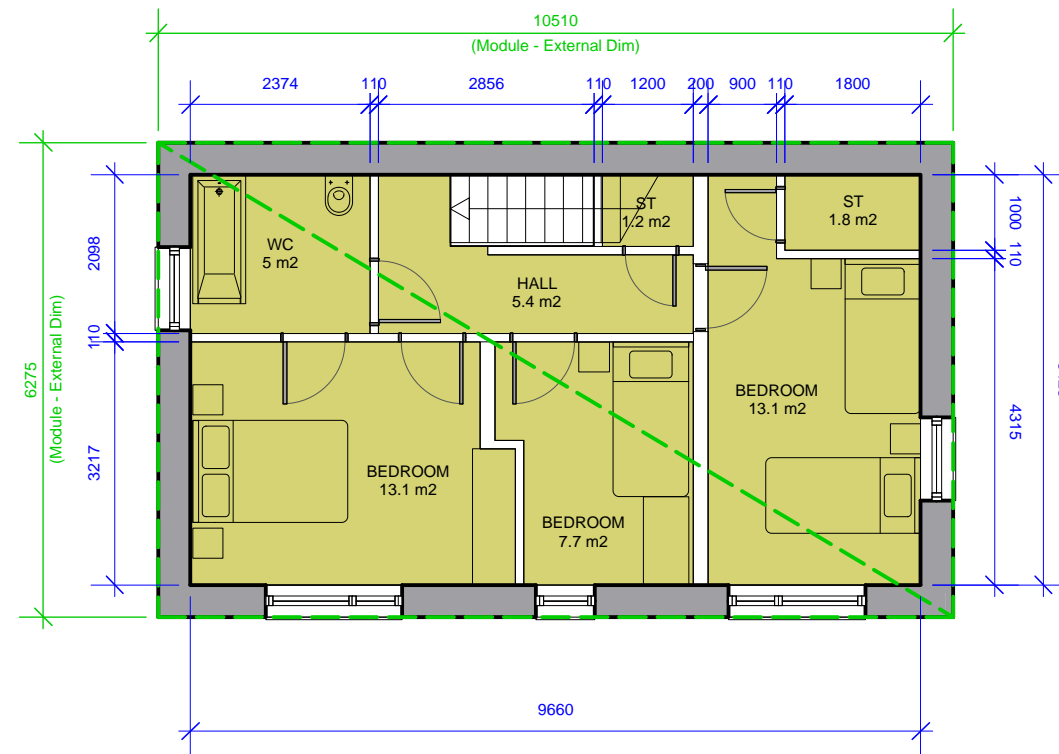
| RELEVANT AREA | PROPOSED UNIT | | EQUIVALENT DEPT GUIDELINES | | COMPARISON OF FLOOR AREA % |
|---------------|---------------|-------------------|----------------------------|----------------------|----------------------------|
| | ACTUAL WIDTH | ACTUAL AREA (SqM) | MIN WIDTH | MIN FLOOR AREA (SqM) | |
| BEDROOM 1 | 3.215 | 13.1 | 2.800 | 13 | 100.77% |
| BEDROOM 2 | 2.810 | 13.5 | 2.800 | 11.4 | 118.42% |
| BEDROOM 3 | 2.240 | 7.7 | 2.100 | 7.1 | 108.45% |

| | | | | | |
|----------------------------------|-------|--------------|--|-------|---------|
| AGGREGATE BEDROOM AREA | | 34.3 | | 31.5 | 108.89% |
| AGGREGATE STORAGE AREA | | 9.0 | | 9.0 | 100.00% |
| TOTAL LIVING/KITCHEN/DINING AREA | | 35.2 | | 34.0 | 103.53% |
| GROSS INTERNAL AREA | 90.0* | 104.8 | | 100.0 | 90%* |
| PRIVATE OPEN SPACE (P.O.S.) | | refer to HQA | | 80.0 | N/A |

*less circulation/hallways



1 Ground Floor Plan
Scale: 1:100

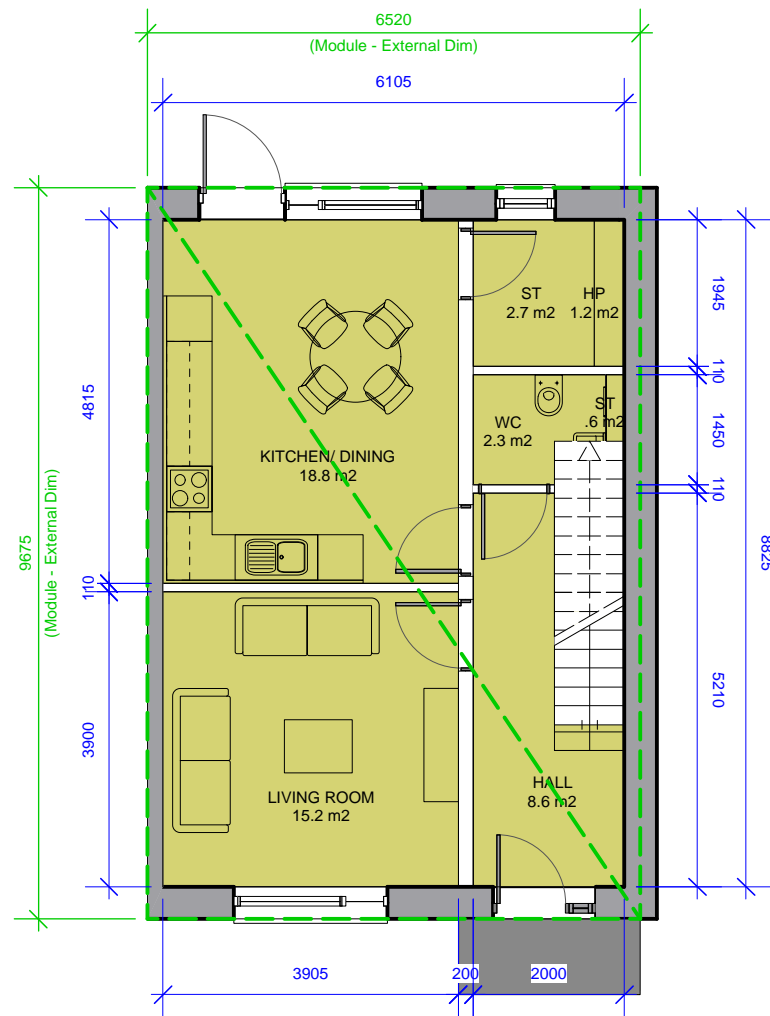


2 First Floor Plan
Scale: 1:100

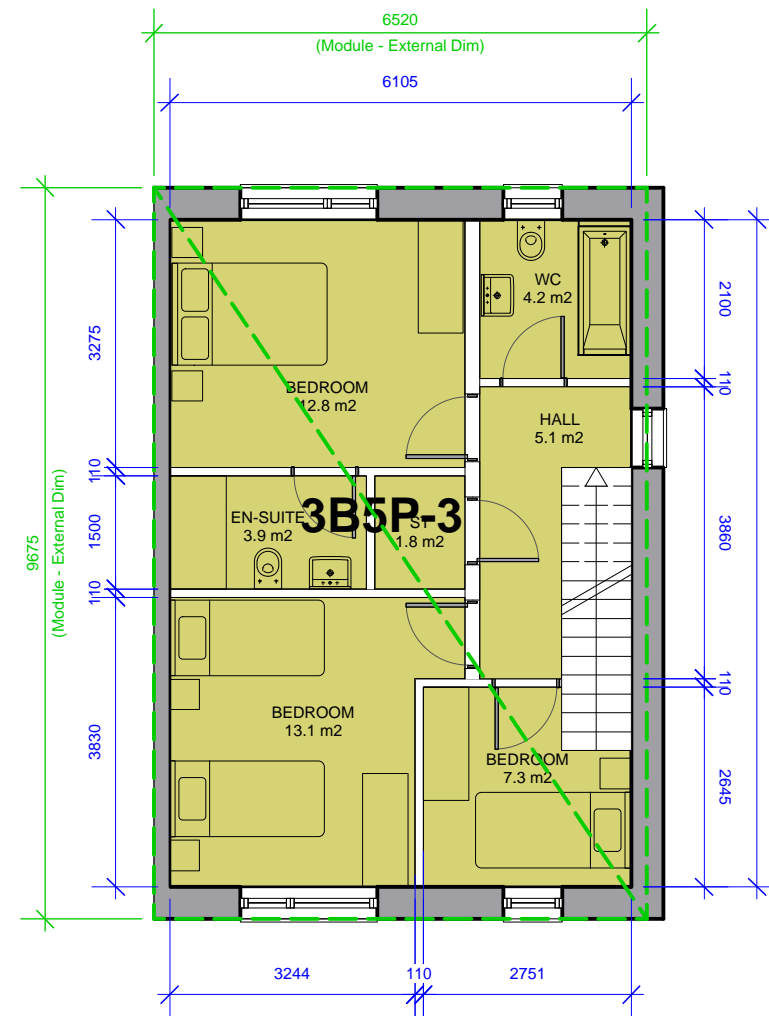
HSE_3B5P_CRD_TYPE D

| RELEVANT AREA | PROPOSED UNIT | | EQUIVALENT DEPT GUIDELINES | | COMPARISON OF FLOOR AREA % |
|---|---------------|-------------------|----------------------------|----------------------|----------------------------|
| | ACTUAL WIDTH | ACTUAL AREA (SqM) | MIN WIDTH | MIN FLOOR AREA (SqM) | |
| BEDROOM 1 | 3.245 | 13.1 | 2.800 | 13 | 100.77% |
| BEDROOM 2 | 3.275 | 12.8 | 2.800 | 11.4 | 112.28% |
| BEDROOM 3 | 2.645 | 7.3 | 2.100 | 7.1 | 102.82% |
| AGGREGATE BEDROOM AREA | | 33.2 | | 31.5 | 105.40% |
| AGGREGATE STORAGE AREA | | 9.5 | | 9.0 | 105.56% |
| TOTAL LIVING/KITCHEN/DINING AREA | | 34.0 | | 34.0 | 100.00% |
| GROSS INTERNAL AREA | 91.3 | 107.8 | 100.0 | 91.3%* | 107.80% |
| PRIVATE OPEN SPACE (P.O.S.) | | refer to HQA | | 80.0 | N/A |

*less circulation/hallways



1 Ground Floor Plan
Scale: 1:100



2 First Floor Plan
Scale: 1:100