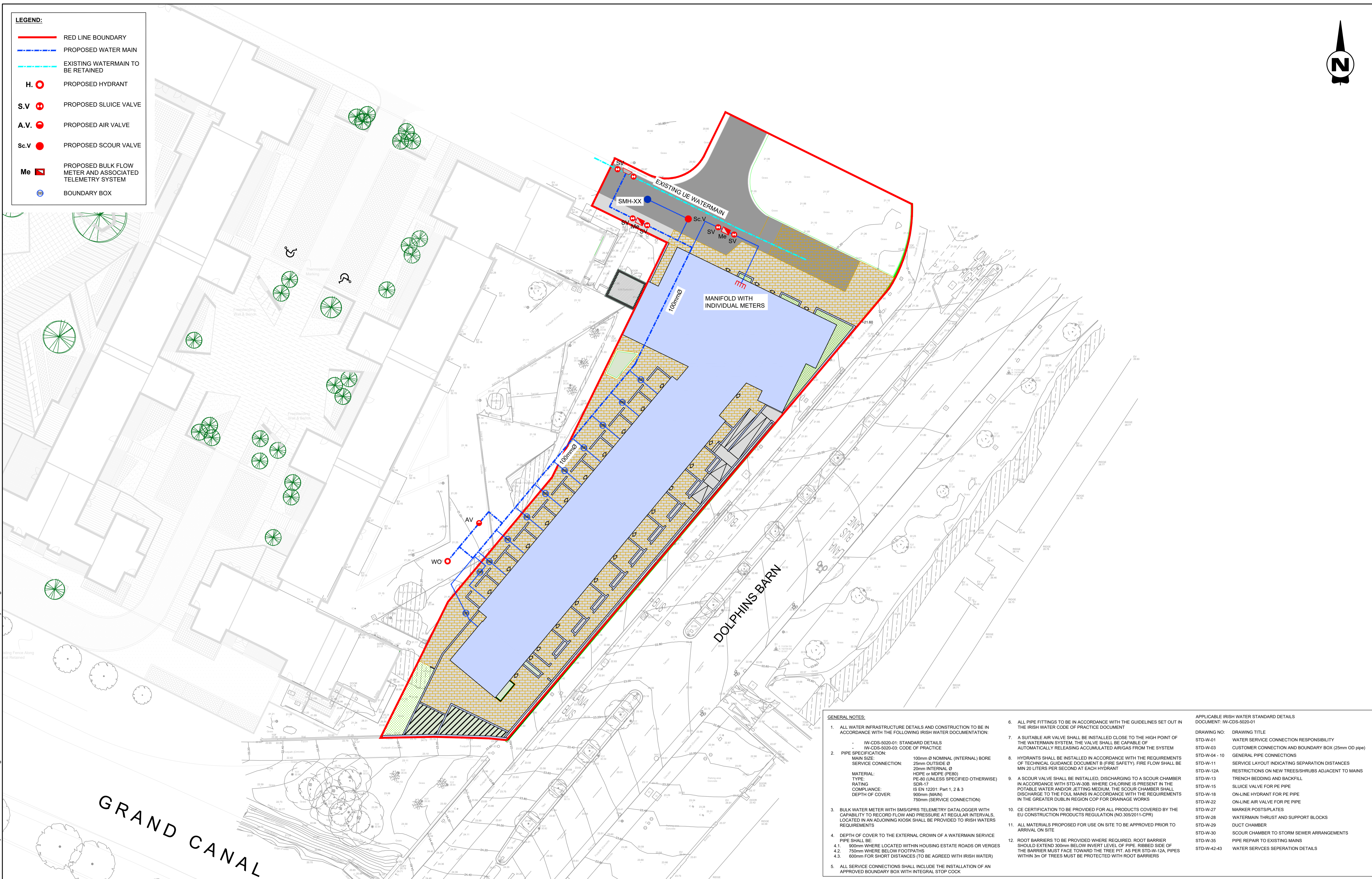


LEGEND:

	RED LINE BOUNDARY
	PROPOSED WATER MAIN
	EXISTING WATERMAIN TO BE RETAINED
	PROPOSED HYDRANT
	PROPOSED SLUICE VALVE
	PROPOSED AIR VALVE
	PROPOSED SCOUR VALVE
	PROPOSED BULK FLOW METER AND ASSOCIATED TELEMETRY SYSTEM
	BOUNDARY BOX



GENERAL NOTES:

- ALL WATER INFRASTRUCTURE DETAILS AND CONSTRUCTION TO BE IN ACCORDANCE WITH THE FOLLOWING IRISH WATER DOCUMENTATION:
 - IW-CDS-5020-01: STANDARD DETAILS
 - IW-CDS-5020-03: CODE OF PRACTICE
- PIPE SPECIFICATION:
 - MAIN SIZE: 100mm Ø NOMINAL (INTERNAL) BORE
 - SERVICE CONNECTION: 25mm OUTSIDE Ø
 - RATING: SDR-17
 - MATERIAL: HDPE or MDPE (PE80)
 - TYPE: PE-80 (UNLESS SPECIFIED OTHERWISE)
 - COMPLIANCE: IS EN 12201: Part 1, 2 & 3
 - DEPTH OF COVER: 900mm (MAIN)
 - 750mm (SERVICE CONNECTION)
- BULK WATER METER WITH SMS/SPRS TELEMETRY DATALOGGER WITH CAPABILITY TO RECORD FLOW AND PRESSURE AT REGULAR INTERVALS. LOCATED IN AN ADJOINING KIOSK SHALL BE PROVIDED TO IRISH WATERS REQUIREMENTS
- DEPTH OF COVER TO THE EXTERNAL CROWN OF A WATERMAIN SERVICE PIPE SHALL BE:
 - 4.1. 900mm WHERE LOCATED WITHIN HOUSING ESTATE ROADS OR VERGES
 - 4.2. 750mm WHERE BELOW FOOTPATHS
 - 4.3. 600mm FOR SHORT DISTANCES (TO BE AGREED WITH IRISH WATER)
- ALL SERVICE CONNECTIONS SHALL INCLUDE THE INSTALLATION OF AN APPROVED BOUNDARY BOX WITH INTEGRAL STOP COCK
- ALL PIPE FITTINGS TO BE IN ACCORDANCE WITH THE GUIDELINES SET OUT IN THE IRISH WATER CODE OF PRACTICE DOCUMENT
- A SUITABLE AIR VALVE SHALL BE INSTALLED CLOSE TO THE HIGH POINT OF THE WATERMAIN SYSTEM, THE VALVE SHALL BE CAPABLE OF AUTOMATICALLY RELEASING ACCUMULATED AIR/GAS FROM THE SYSTEM
- HYDRANTS SHALL BE INSTALLED IN ACCORDANCE WITH THE REQUIREMENTS OF TECHNICAL GUIDANCE DOCUMENT B (FIRE SAFETY). FIRE FLOW SHALL BE MIN 20 LITERS PER SECOND AT EACH HYDRANT
- A SCOUR VALVE SHALL BE INSTALLED, DISCHARGING TO A SCOUR CHAMBER IN ACCORDANCE WITH STD-W-308. WHERE CHLORINE IS PRESENT IN THE POTABLE WATER AND/OR JETTING MEDIUM, THE SCOUR CHAMBER SHALL DISCHARGE TO THE FOUL MAINS IN ACCORDANCE WITH THE REQUIREMENTS IN THE GREATER DUBLIN REGION COP FOR DRAINAGE WORKS
- CE CERTIFICATION TO BE PROVIDED FOR ALL PRODUCTS COVERED BY THE EU CONSTRUCTION PRODUCTS REGULATION (NO.305/2011-CPR)
- ALL MATERIALS PROPOSED FOR USE ON SITE TO BE APPROVED PRIOR TO ARRIVAL ON SITE
- ROOT BARRIERS TO BE PROVIDED WHERE REQUIRED. ROOT BARRIER SHOULD EXTEND 300mm BELOW INVERT LEVEL OF PIPE. RIBBED SIDE OF THE BARRIER MUST FACE TOWARD THE TREE PIT. AS PER STD-W-12A, PIPES WITHIN 3m OF TREES MUST BE PROTECTED WITH ROOT BARRIERS

APPLICABLE IRISH WATER STANDARD DETAILS DOCUMENT: IW-CDS-5020-01

DRAWING NO:	DRAWING TITLE
STD-W-01	WATER SERVICE CONNECTION RESPONSIBILITY
STD-W-03	CUSTOMER CONNECTION AND BOUNDARY BOX (25mm OD pipe)
STD-W-04 - 10	GENERAL PIPE CONNECTIONS
STD-W-11	SERVICE LAYOUT INDICATING SEPARATION DISTANCES
STD-W-12A	RESTRICTIONS ON NEW TREES/SHRUBS ADJACENT TO MAINS
STD-W-13	TRENCH BEDDING AND BACKFILL
STD-W-15	SLUICE VALVE FOR PE PIPE
STD-W-18	ON-LINE HYDRANT FOR PE PIPE
STD-W-22	ON-LINE AIR VALVE FOR PE PIPE
STD-W-27	MARKER POSTS/PLATES
STD-W-28	WATERMAIN THRUST AND SUPPORT BLOCKS
STD-W-29	DUCT CHAMBER
STD-W-30	SCOUR CHAMBER TO STORM SEWER ARRANGEMENTS
STD-W-35	PIPE REPAIR TO EXISTING MAINS
STD-W-42-43	WATER SERVICES SEPERATION DETAILS

I:\dub-wp-01\Work_Structures\IE000614A-RPS-DR-XX-D-C-3001-Watermain_Layout.dwg

Client

Comhairle Cathrach
Bhaile Átha Cliath
Dublin City Council

General Notes

(i) Hard copies, dwf and pdf will form a controlled issue of the drawing. All other formats (dwg etc.) are deemed to be an uncontrolled issue and any work carried out based on these files is at the recipients own risk. RPS will not accept any responsibility for any errors from the use of these files, either by human error by the recipient, listing of the un-dimensioned measurements, compatibility with the recipients software, and any errors arising when these files are used to aid the recipients drawing production, or setting out on site.

(ii) DO NOT SCALE, use figured dimensions only.

(iii) This drawing is the property of RPS, it is a project confidential classified document. It must not be copied used or its contents divulged without prior written consent. The needs and expectations of client and RPS must be considered when working with this drawing.

(iv) Information including topographical survey, geotechnical investigation and utility detail used in the design have been provided by others.

(v) All Levels refer to Ordnance Survey Datum, Malin Head.

Rev	Date	By	App	Amendment / Issue
S2 P02	08.08.25	AP		ISSUE FOR INFORMATION
S2 P01	12.06.25	AP		ISSUE FOR INFORMATION

RPS
MAKING COMPLEX EASY
A TETRA TECH COMPANY

Scale	1/250 @ A1 1/500 @ A3
Created on	08.04.24
Sheets	1 of 1

Project	DOLPHIN HOUSE RIALTO
Title	WATERMAIN LAYOUT
File Identifier	IE000614A-RPS-DR-XX-D-C-3001
Status	S2
Rev	P02