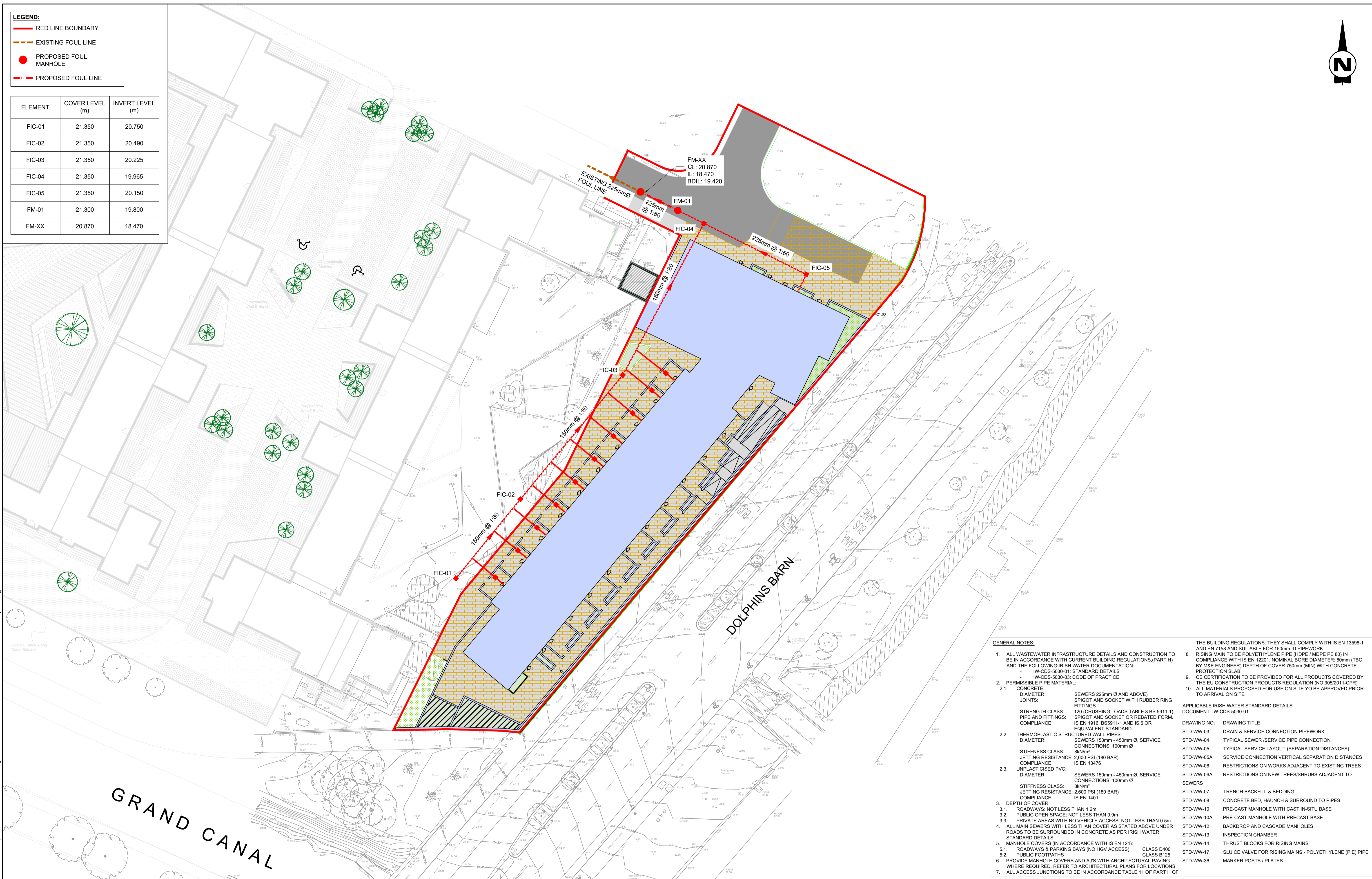




LEGEND:

- RED LINE BOUNDARY
- EXISTING FOUL LINE
- PROPOSED FOUL MANHOLE
- PROPOSED FOUL LINE

ELEMENT	COVER LEVEL (m)	INVERT LEVEL (m)
FIC-01	21.350	20.750
FIC-02	21.350	20.490
FIC-03	21.350	20.225
FIC-04	21.350	19.965
FIC-05	21.350	20.150
FM-01	21.300	19.800
FM-XX	20.870	18.470



GENERAL NOTES:

- ALL WASTEWATER INFRASTRUCTURE DETAILS AND CONSTRUCTION TO BE IN ACCORDANCE WITH CURRENT BUILDING REGULATIONS (PART H) AND THE FOLLOWING IRISH WATER DOCUMENTATION:
 - IW-CDS-5030-01: STANDARD DETAILS
 - IW-CDS-5030-03: CODE OF PRACTICE
- PERMISSIBLE PIPE MATERIAL:
 - CONCRETE:
 - DIAMETER: SEWERS 225mm Ø AND ABOVE)
 - JOINTS: SPIGOT AND SOCKET WITH RUBBER RING FITTINGS
 - STRENGTH CLASS: 120 (CRUSHING LOADS TABLE 8 BS 5911-1)
 - PIPE AND FITTINGS: SPIGOT AND SOCKET OR REBATED FORM.
 - COMPLIANCE: IS EN 1916, BS5911-1 AND IS 6 OR EQUIVALENT STANDARD
 - THERMOPLASTIC STRUCTURED WALL PIPES:
 - DIAMETER: SEWERS 150mm - 450mm Ø, SERVICE CONNECTIONS: 100mm Ø
 - STIFFNESS CLASS: 8kN/m²
 - JETTING RESISTANCE: 2,600 PSI (180 BAR)
 - COMPLIANCE: IS EN 13476
 - UNPLASTICISED PVC:
 - DIAMETER: SEWERS 150mm - 450mm Ø, SERVICE CONNECTIONS: 100mm Ø
 - STIFFNESS CLASS: 8kN/m²
 - JETTING RESISTANCE: 2,600 PSI (180 BAR)
 - COMPLIANCE: IS EN 1401
- DEPTH OF COVER:
 - ROADWAYS: NOT LESS THAN 1.2m
 - PUBLIC OPEN SPACE: NOT LESS THAN 0.9m
 - PRIVATE AREAS WITH NO VEHICLE ACCESS: NOT LESS THAN 0.5m
- ALL MAIN SEWERS WITH LESS THAN COVER AS STATED ABOVE UNDER ROADS TO BE SURROUNDED IN CONCRETE AS PER IRISH WATER STANDARD DETAILS
- MANHOLE COVERS (IN ACCORDANCE WITH IS EN 124):
 - ROADWAYS & PARKING BAYS (NO HGV ACCESS): CLASS D400
 - PUBLIC FOOTPATHS: CLASS B125
- PROVIDE MANHOLE COVERS AND AJS WITH ARCHITECTURAL PAVING WHERE REQUIRED. REFER TO ARCHITECTURAL PLANS FOR LOCATIONS
- ALL ACCESS JUNCTIONS TO BE IN ACCORDANCE TABLE 11 OF PART H OF THE BUILDING REGULATIONS. THEY SHALL COMPLY WITH IS EN 13598-1 AND EN 7158 AND SUITABLE FOR 150mm ID PIPEWORK
- RISING MAIN TO BE POLYETHYLENE PIPE (HDPE / MDPE PE 80) IN COMPLIANCE WITH IS EN 12201. NOMINAL BORE DIAMETER, 80mm (TBC BY M&E ENGINEER) DEPTH OF COVER 750mm (MIN) WITH CONCRETE PROTECTION SLAB
- CE CERTIFICATION TO BE PROVIDED FOR ALL PRODUCTS COVERED BY THE EU CONSTRUCTION PRODUCTS REGULATION (NO 305/2011-CPR)
- ALL MATERIALS PROPOSED FOR USE ON SITE YO BE APPROVED PRIOR TO ARRIVAL ON SITE

APPLICABLE IRISH WATER STANDARD DETAILS DOCUMENT: IW-CDS-5030-01

DRAWING NO:	DRAWING TITLE
STD-WW-03	DRAIN & SERVICE CONNECTION PIPEWORK
STD-WW-04	TYPICAL SEWER /SERVICE PIPE CONNECTION
STD-WW-05	TYPICAL SERVICE LAYOUT (SEPARATION DISTANCES)
STD-WW-05A	SERVICE CONNECTION VERTICAL SEPARATION DISTANCES
STD-WW-06	RESTRICTIONS ON WORKS ADJACENT TO EXISTING TREES
STD-WW-06A	RESTRICTIONS ON NEW TREES/SHRUBS ADJACENT TO SEWERS
STD-WW-07	TRENCH BACKFILL & BEDDING
STD-WW-08	CONCRETE BED, HAUNCH & SURROUND TO PIPES
STD-WW-10	PRE-CAST MANHOLE WITH CAST IN-SITU BASE
STD-WW-10A	PRE-CAST MANHOLE WITH PRECAST BASE
STD-WW-12	BACKDROP AND CASCADE MANHOLES
STD-WW-13	INSPECTION CHAMBER
STD-WW-14	THRUST BLOCKS FOR RISING MAINS
STD-WW-17	SLUICE VALVE FOR RISING MAINS - POLYETHYLENE (P-E) PIPE
STD-WW-36	MARKER POSTS / PLATES

I:\Dublin\wp-01\Work_Structures\IE000614A - Dolphins House Rialto\6.0 Drawings\DWG\IE000614A-RPS-DR-XX-D-C-3002 Foul Sewer Layout.dwg

Client

Comhairle Cathrach
Bhaile Átha Cliath
Dublin City Council

General Notes

(i) Hard copies, dwf and pdf will form a controlled issue of the drawing. All other formats (dwg etc.) are deemed to be an uncontrolled issue and any work carried out based on these files is at the recipients own risk. RPS will not accept any responsibility for any errors from the use of these files, either by human error by the recipient, listing of the un-dimensioned measurements, compatibility with the recipients software, and any errors arising when these files are used to aid the recipients drawing production, or setting out on site.

(ii) DO NOT SCALE, use figured dimensions only.

(iii) This drawing is the property of RPS, it is a project confidential classified document. It must not be copied used or its contents divulged without prior written consent. The needs and expectations of client and RPS must be considered when working with this drawing.

(iv) Information including topographical survey, geotechnical investigation and utility detail used in the design have been provided by others.

(v) All Levels refer to Ordnance Survey Datum, Malin Head.

Rev	Date	Drawn	Checked	Amendment / Issue	App
S2 P02	08.08.25	AP	AP	ISSUE FOR INFORMATION	AC
S2 P01	12.06.25	AP	AP	ISSUE FOR INFORMATION	AC

MAKING COMPLEX EASY

A TETRA TECH COMPANY

Scale	Project	Status	Rev
1/250 @ A1 1/500 @ A3	DOLPHIN HOUSE RIALTO	S2	P02
Created on	Title	File Identifier	Rev
08.04.24	FOUL SEWER LAYOUT	IE000614A-RPS-DR-XX-D-C-3002	P02
Sheets	1 of 1	Model File Identifier	