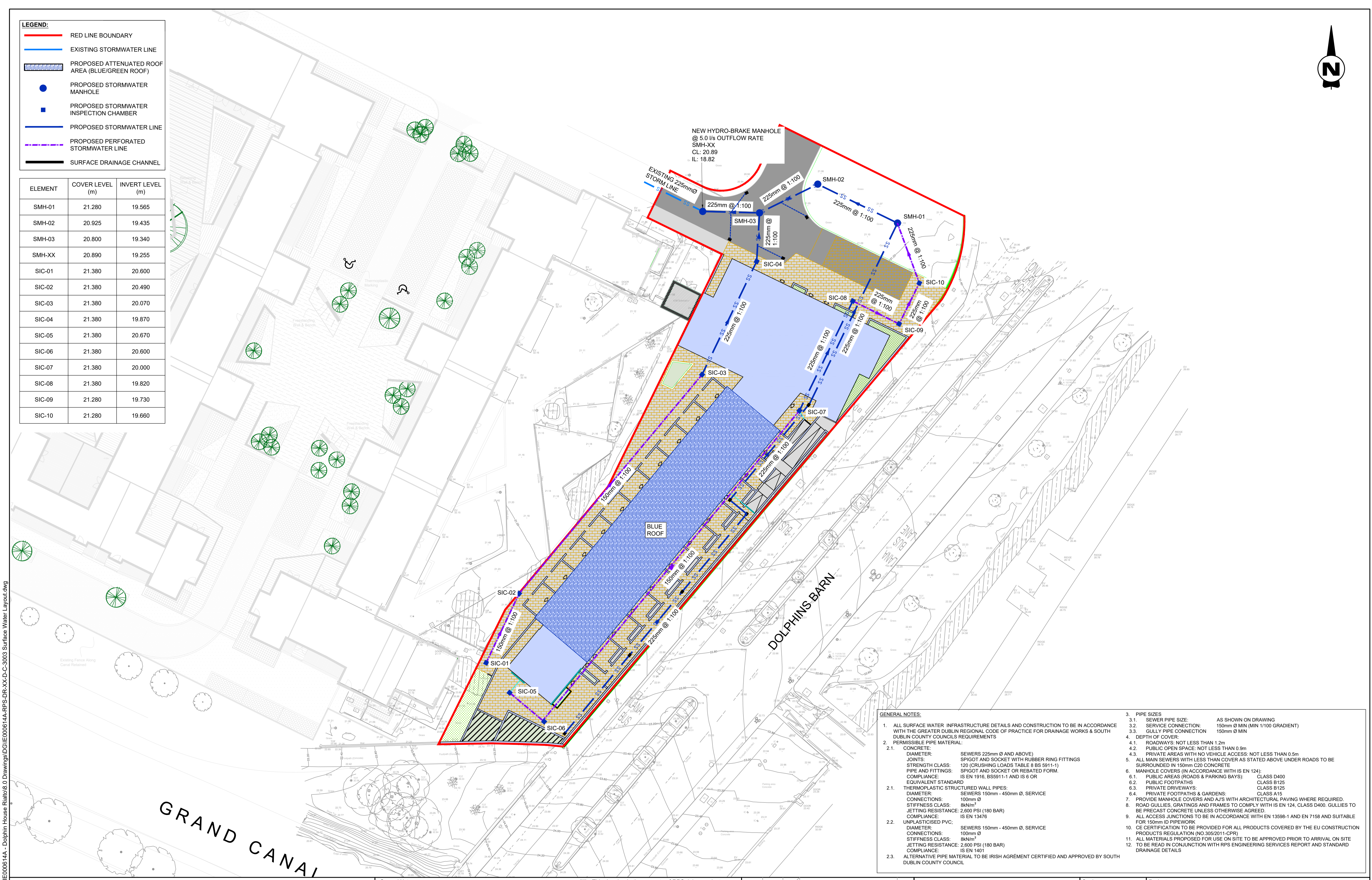




**LEGEND:**

- RED LINE BOUNDARY
- EXISTING STORMWATER LINE
- PROPOSED ATTENUATED ROOF AREA (BLUE/GREEN ROOF)
- PROPOSED STORMWATER MANHOLE
- PROPOSED STORMWATER INSPECTION CHAMBER
- PROPOSED STORMWATER LINE
- - - PROPOSED PERFORATED STORMWATER LINE
- SURFACE DRAINAGE CHANNEL

ELEMENT	COVER LEVEL (m)	INVERT LEVEL (m)
SMH-01	21.280	19.565
SMH-02	20.925	19.435
SMH-03	20.800	19.340
SMH-XX	20.890	19.255
SIC-01	21.380	20.600
SIC-02	21.380	20.490
SIC-03	21.380	20.070
SIC-04	21.380	19.870
SIC-05	21.380	20.670
SIC-06	21.380	20.600
SIC-07	21.380	20.000
SIC-08	21.380	19.820
SIC-09	21.280	19.730
SIC-10	21.280	19.660



- GENERAL NOTES:**
1. ALL SURFACE WATER INFRASTRUCTURE DETAILS AND CONSTRUCTION TO BE IN ACCORDANCE WITH THE GREATER DUBLIN REGIONAL CODE OF PRACTICE FOR DRAINAGE WORKS & SOUTH DUBLIN COUNTY COUNCILS REQUIREMENTS
  2. PERMISSIBLE PIPE MATERIAL:
    - 2.1. CONCRETE:
      - DIAMETER: SEWERS 225mm Ø AND ABOVE
      - JOINTS: SPIGOT AND SOCKET WITH RUBBER RING FITTINGS
      - STRENGTH CLASS: 120 (CRUSHING LOADS TABLE 8 SS 5911-1)
      - PIPE AND FITTINGS: SPIGOT AND SOCKET OR REBATED FORM, IS EN 1916, BS5911-1 AND IS 6 OR EQUIVALENT STANDARD
    - 2.2. THERMOPLASTIC STRUCTURED WALL PIPES:
      - DIAMETER: SEWERS 150mm - 450mm Ø, SERVICE 100mm Ø
      - CONNECTIONS: 100mm Ø
      - STIFFNESS CLASS: 8kNm<sup>2</sup>
      - JETTING RESISTANCE: 2,600 PSI (180 BAR)
      - COMPLIANCE: IS EN 13476
    - 2.3. UNPLASTICISED PVC:
      - DIAMETER: SEWERS 150mm - 450mm Ø, SERVICE 100mm Ø
      - CONNECTIONS: 100mm Ø
      - STIFFNESS CLASS: 8kNm<sup>2</sup>
      - JETTING RESISTANCE: 2,600 PSI (180 BAR)
      - COMPLIANCE: IS EN 1401
  - 2.3. ALTERNATIVE PIPE MATERIAL TO BE IRISH AGREEMENT CERTIFIED AND APPROVED BY SOUTH DUBLIN COUNTY COUNCIL
  3. PIPE SIZES
    - 3.1. SEWER PIPE SIZE: AS SHOWN ON DRAWING
    - 3.2. SERVICE CONNECTION: 150mm Ø MIN (MIN 1/100 GRADIENT)
    - 3.3. GULLY PIPE CONNECTION: 150mm Ø MIN
  4. DEPTH OF COVER:
    - 4.1. ROADWAYS: NOT LESS THAN 1.2m
    - 4.2. PUBLIC OPEN SPACE: NOT LESS THAN 0.9m
    - 4.3. PRIVATE AREAS WITH NO VEHICLE ACCESS: NOT LESS THAN 0.5m
  5. ALL MAIN SEWERS WITH LESS THAN COVER AS STATED ABOVE UNDER ROADS TO BE SURROUNDED IN 150mm C20 CONCRETE
  6. MANHOLE COVERS (IN ACCORDANCE WITH IS EN 124):
    - 6.1. PUBLIC AREAS (ROADS & PARKING BAYS): CLASS D400
    - 6.2. PUBLIC FOOTPATHS: CLASS B125
    - 6.3. PRIVATE DRIVEWAYS: CLASS B125
    - 6.4. PRIVATE FOOTPATHS & GARDENS: CLASS A15
  7. PROVIDE MANHOLE COVERS AND AJS WITH ARCHITECTURAL PAVING WHERE REQUIRED.
  8. ROAD GULLIES, GRATINGS AND FRAMES TO COMPLY WITH IS EN 124, CLASS D400. GULLIES TO BE PRECAST CONCRETE UNLESS OTHERWISE AGREED
  9. ALL ACCESS JUNCTIONS TO BE IN ACCORDANCE WITH EN 13598-1 AND EN 7158 AND SUITABLE FOR 150mm ID PIPEWORK
  10. CE CERTIFICATION TO BE PROVIDED FOR ALL PRODUCTS COVERED BY THE EU CONSTRUCTION PRODUCTS REGULATION (NO 305/2011-CPR)
  11. ALL MATERIALS PROPOSED FOR USE ON SITE TO BE APPROVED PRIOR TO ARRIVAL ON SITE TO BE READ IN CONJUNCTION WITH RPS ENGINEERING SERVICES REPORT AND STANDARD DRAINAGE DETAILS
  12. TO BE READ IN CONJUNCTION WITH RPS ENGINEERING SERVICES REPORT AND STANDARD DRAINAGE DETAILS

I:\dub-wp-01\Work\_Structures\IE000614A - Dolphin House Rialto\06.0 Drawings\DG\IE000614A-RPS-DR-XX-D-C-3003 Surface Water Layout.dwg

Client

Comhairle Cathrach  
Bhaile Átha Cliath  
Dublin City Council

**General Notes**

(i) Hard copies, dwf and pdf will form a controlled issue of the drawing. All other formats (dwg etc.) are deemed to be an uncontrolled issue and any work carried out based on these files is at the recipients own risk. RPS will not accept any responsibility for any errors from the use of these files, either by human error by the recipient, listing of the un-dimensioned measurements, compatibility with the recipients software, and any errors arising when these files are used to aid the recipients drawing production, or setting out on site.

(ii) DO NOT SCALE, use figured dimensions only.

(iii) This drawing is the property of RPS, it is a project confidential classified document. It must not be copied used or its contents divulged without prior written consent. The needs and expectations of client and RPS must be considered when working with this drawing.

(iv) Information including topographical survey, geotechnical investigation and utility detail used in the design have been provided by others.

(v) All Levels refer to Ordnance Survey Datum, Malin Head.

Rev	Date	Dwg Cmk	Amendment / Issue	App
S2 P02	08.08.25	AP	ISSUE FOR INFORMATION	AC
S2 P01	12.06.25	AP	ISSUE FOR INFORMATION	AC

**MAKING COMPLEX EASY**

A TETRA TECH COMPANY

Model File Identifier

Scale	1/250 @ A1 1/500 @ A3	Project	<b>DOLPHIN HOUSE RIALTO</b>
Created on	08.04.24	Title	<b>SURFACE WATER LAYOUT</b>
Sheets	1 of 1	File Identifier	IE000614A-RPS-DR-XX-D-C-3003
Status	S2	Rev	P02