

SCHOOL STREET/THOMAS BAWN COURT LANDSCAPE SECTION AA



Section cut line - Continued on Sheet 6000

New planting under existing trees Access to building entrances New planting under existing trees Access to building entrances New streetscape planting Building entrance plaza New streetscape planting Existing footpath retained

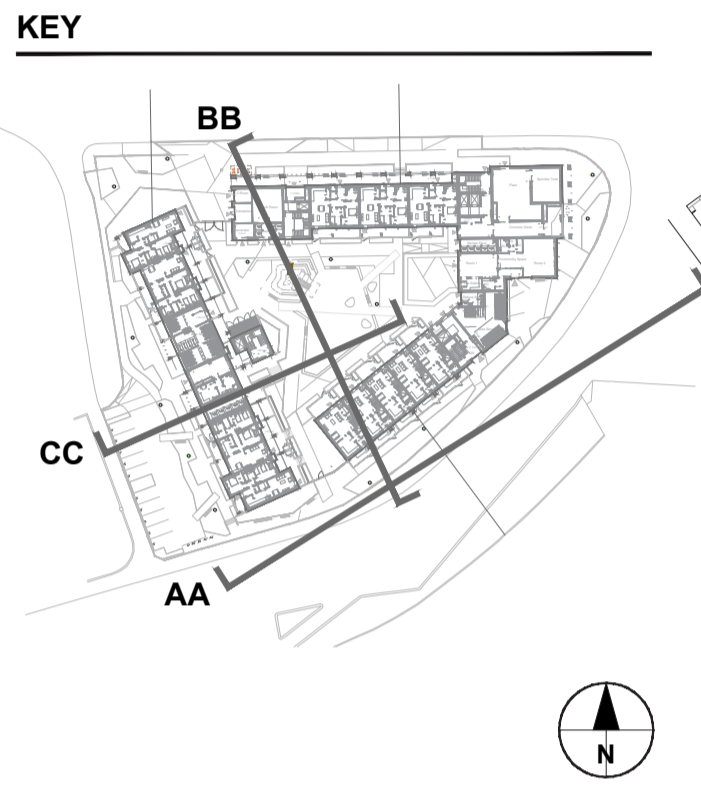
SCALE 1:100 @A1



PROJECT
School Street/Thomas Bawn Court Renewal
 School Street, The Liberties, Dublin 8

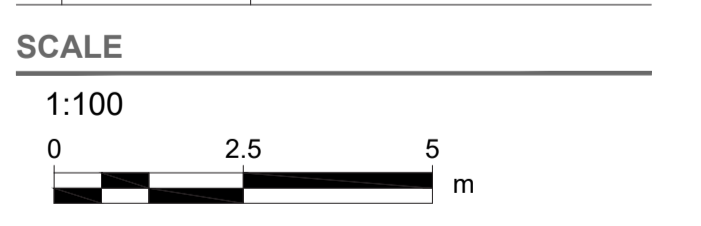
CLIENT
 Dublin City Council

CONSULTANT
 AECOM Ireland Limited
 24 Hatch Street Lower
 Dublin 2
 Tel: 01 238 3100
 www.aecom.com



PLEASE REFER TO CIVILS DRAWINGS FOR SuDS INFORMATION

ISSUE/REVISION		
I/R	DATE	DESCRIPTION
B	05/09/2025	Issued for Part 8
A	20/06/2024	ISSUE FOR STAGE 2A



PROJECT NUMBER
 60719103

SHEET TITLE
 SCHOOL STREET/THOMAS BAWN COURT LANDSCAPE SECTIONS
 SHEET 2 OF 4

SHEET NUMBER
 60719103-ACM-XX-00-DR-LA-00-6001

This drawing has been prepared for the use of AECOM's client. It may not be used, modified, reproduced or relied upon by third parties, except as agreed by AECOM or as required by law. AECOM accepts no responsibility, and denies any liability, whatsoever, to any party that uses or relies on this drawing without AECOM's express written consent. Do not scale this document. All measurements must be obtained from the stated dimensions.